



Welcome to **DOOM II**, a lightning-fast virtual reality adventure where you are the toughest space trooper ever to suck vacuum. Your mission is to fight your way through the demon-infested earth in the hopes of saving the Earth from an eternity in Hell.

The gameplay for **DOOM II** is simple. This isn't a cumbersome adventure game, but an action-oriented slugathon. To survive all you need is brains and a killer instinct.

## The Story Continues...

### **DOOM II: Hell on Earth**



Back at last. After days of hard fighting in space, you've returned home on well-earned leave. You're one of Earth's crack soldiers, hard-bitten, tough, and heavily-armed. When the alien invasion struck Mars, you were the first on the scene. By killing, killing, and killing, you won. You stopped the invasion, saved Mars base, and became a war hero. What they don't talk about so much is that you were the only survivor.

But that's all behind you now. You've quit the military, and are heading home. Your drop pod lands with a crunch. You open 'er up, and look out. Damn! The city ahead is on fire. What the devil is going on? You stagger forward, clutching at your sidearm. Packs of refugees are fleeing the flaming metropolis. A band of them shriek in terror. You squint. What's that? Someone is attacking the refugees. You rush up and blast away, killing the troublemaker. It looks like a human, but something's wrong. His mouth is filled with half-chewed flesh, and he's all messed up, like a zombie from a bad horror movie. Hell, not again!

You can feel it. It's all starting again, just like on Mars. First, people are taken over, turned into cannibal things. Then the real horror starts, the deformed monstrosities from Outside. But now it's on Earth.

It turns out that the invaders are all over. Monsters range from Tokyo to Timbuktu, from Stockholm to Scranton. Billions are dead. Some people have been transformed into flesh-eating mutants, but a few, a very few, are still alive and fully human. The wise men of humanity have evolved a plan to save what's left of the human race. They have built enormous ships to carry the remaining people into space, safely away from the ruined world.

Unfortunately, Earth's only ground spaceport has just been taken over by the demons. They've instituted a sort of force field—a flame barrier—over the port; no ships can land or take off. You gotta go back into action. The pathetic remnants of Earth's soldiers are making an assault on the invaders at the spaceport. If you win, you might be able to turn off the barrier, so that the ships can leave, and Homo sapiens may not go extinct just yet. If you lose, that's it. Humanity is history.



You and your comrades make their attack. Soon, brave men drop like flies. You lose track of your friends, though sometimes you can hear them scream when they die, and the sounds of combat echo from deep within the starbase.

Something hisses with rage from the steel tunnels ahead. They know you're here. They have no pity, no mercy, take no quarter, and crave none. They're the perfect enemy, in a way. No one's left but you. You... and Them.

## Installing **DOOM II**

The minimum system required for playing **DOOM II** is:

- ☞ 486 processor operating at a minimum of 50Mhz
- ☞ 8 MB of RAM(64MB for Windows XP, 128MB recommended)□□
- ☞ A 256 color video adaptor
- ☞ Microsoft® Windows® 95

You can also take advantage of:

- ☞ A Windows 95 compatible sound card
- ☞ A modem with at least a 9600-baud setting
- ☞ A TCP/IP or SPX/IPX network

All these devices must be set up to work with your Microsoft Windows 95 (or later) operating system. If, for example, you have problems with sound, you should work with the basic Windows configuration of your sound card (in the Control panel) to get things working.

To install from Windows 95/98/ME/2000/XP:

### If your system supports AutoPlay

Simply insert the CD into your computer—the setup program will start automatically.

### If your system does not support AutoPlay, or you have disabled AutoPlay

Insert the CD into your computer.

Double-click on **My Computer**.

Double-click on your CD drive (“Doom2”).

Double-click on **Setup.exe** and follow the directions as presented.

*Note:* The installer will install all three portions of the **DOOM COLLECTOR'S EDITION** on your computer (**ULTIMATE DOOM**, **DOOM II**, and **FINAL DOOM**). You do not need to install each component individually.

## Uninstalling **DOOM II**

In the unlikely event you should ever want to remove **DOOM II** from your computer, you should resist the temptation to simply delete the files from your disk manually. Instead, use the built in capabilities of your Windows operating system to perform a cleaner, more comprehensive uninstall. You can do this in any of three ways:

1) Insert the CD into your computer (and run the setup program as detailed above if your system does not support AutoPlay, or you have disabled AutoPlay). When the **DOOM COLLECTOR'S EDITION** splash screen comes up, click on **UNINSTALL**, and follow the directions as presented; **OR**

2) Click on **Start**. Select **Programs**. Select the group in which you installed **DOOM COLLECTOR'S EDITION** (the default is **DOOM COLLECTOR'S EDITION**). Click on the choice entitled **Uninstall DOOM COLLECTOR'S EDITION** and follow the directions as presented; **OR**

3) Open the control panel and double-click the **Add/Remove Programs** icon. Select **DOOM COLLECTOR'S EDITION** from the list of applications, press the **Add/Remove** button, and confirm the removal of **DOOM COLLECTOR'S EDITION**.



*Note:* The uninstall procedure will uninstall all three portions of the **DOOM COLLECTOR'S EDITION** on your computer (**ULTIMATE DOOM**, **DOOM II**, and **FINAL DOOM**) at the same time. You do not need to uninstall each component individually.

## Reinstalling **DOOM II**

If you should inadvertently remove a necessary **DOOM II** file from your computer and need to reinstall, you should first perform an uninstall, then install a fresh copy.

## Running **DOOM II**

Once installed you can run **DOOM II** by performing the following steps:

Click on **Start**.

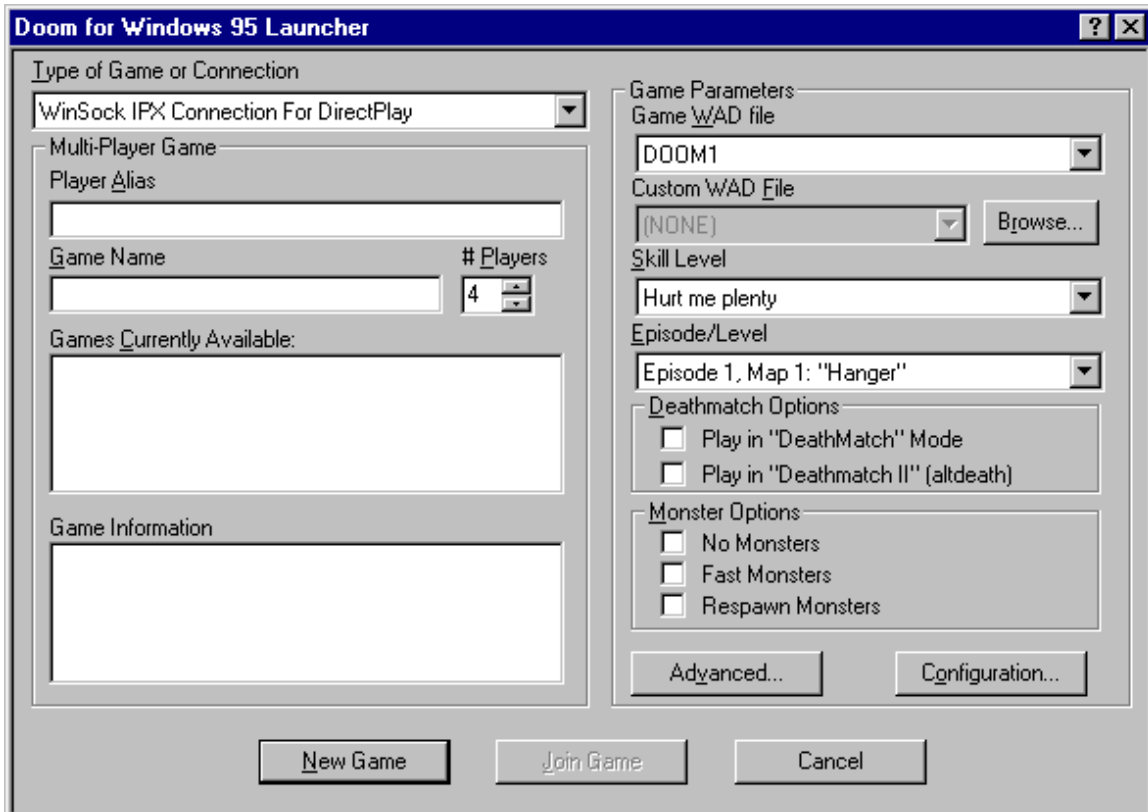
Select **Programs**.

Select the group in which you installed **DOOM COLLECTOR'S EDITION** (the default is **DOOM COLLECTOR'S EDITION**).

Click on **Doom II**.

This will bring up the **DOOM II** launcher. **DOOM II** has a number of options that can only be set when it is started. The launcher allows you to set these options and start single or multi-player games. The Launcher also provides access to the Configuration Dialog, which allows you to personalize **DOOM II** to your preferences, and the Advanced Dialog, which allows you to specify advanced game options.

### THE LAUNCHER DIALOG



**Type of Game or Connection:** Select a single player game, or play with human opponents using your network or modem.

**Player Alias:** This name will be used to represent you to other players in a multi-player game.

**Game Name:** This name will be used to identify your multi-player **DOOM II** session for other players.

**# Players:** If you intend to create a new multi-player game, specify the number of players here. Modem games are limited to two players. Network games may have two to four players. The game will not be started until the specified number of players have joined.

**Games Currently Available:** If you have selected a multi-player game type, any pre-existing compatible games will be listed here. You may join an existing game, or create your own.

**Game Information:** This item is applicable only to existing multi-player games. If you have specified a multi-player game, selecting an existing game from the Games Currently Available list will display information about that game, such as the skill level, here.

**Game WAD file:** The Game WAD File defines the basic settings, monsters, and weapons of **DOOM II**. This information may be extended or replaced by custom WADs, but a licensed game WAD is still required to play.

**Custom WAD File:** Specify an optional Custom WAD File for this game. Custom WADs expand your **DOOM II** experience by providing new settings, monsters, and weapons.

**Browse:** Browse your disk for a Custom WAD File.

**Skill Level:** Determines how many monsters are around trying to kill you.

**Episode/Level:** Choose an episode and level to begin on.

**Play in "DeathMatch" Mode:** Launch a multi-player DeathMatch game in which you play against, rather than cooperate with, other players. You can't see your opponents on the map or switch to their viewpoint, nor will you begin in the same area.

**Play in "Deathmatch II" (altdeath):** Similar to a regular DeathMatch, except that objects will reappear after 30 seconds, killing yourself subtracts from your score, and negative scores are possible.

**Fast Monsters:** Gives monsters extra speed. This is standard behavior for the Nightmare skill level.

**Respawn Monsters:** Monsters will remain dead for around eight seconds, then return with a vengeance. This is standard behavior for the Nightmare skill level.

**No Monsters:** Start a game with no monsters. Commonly used for DeathMatch play, when monsters can be an unwanted distraction.

**Advanced...:** Launch a saved game, create a demo, or use other advanced options (see "Advanced Options" below).

**Configuration...:** Configure your keyboard, mouse, joystick, chat strings, or audio using the Configuration Dialog (see "Configuration Settings" below).

**New Game:** Launch a new or saved game.

**Join Game:** Join an existing multi-player game.

**Cancel:** Close the Launcher.

## Advanced Options

### THE ADVANCED DIALOG



The **DOOM II** Launcher provides an Advanced Options Dialog for restoring saved games, creating timed games, recording and playing back “demos”, and controlling the game’s graphical detail and window size.

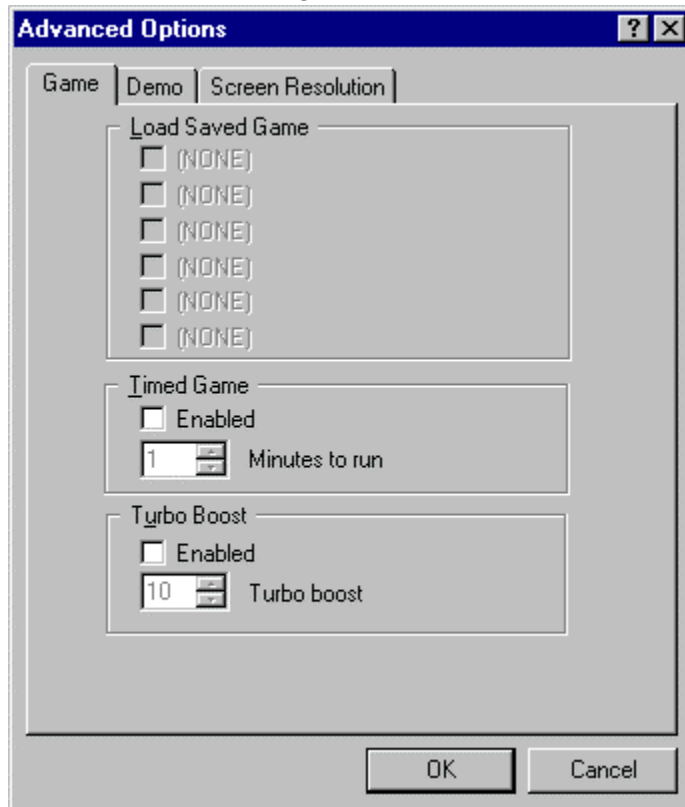
**Game:** Opens the Game Panel (see “**Game Settings**” below).

**Demo:** Opens the Demo Panel (see “**Demo Settings**” below).

**Screen Resolution:** Opens the Screen Panel (see “**Screen Settings**” below).

## Game Settings

### THE GAME PANEL



**Load Saved Game:** Previously saved games are listed here. To restart one, place a checkmark beside it.

**(Timed Game) Enabled:** Play a timed game. The game will automatically terminate after the specified duration.

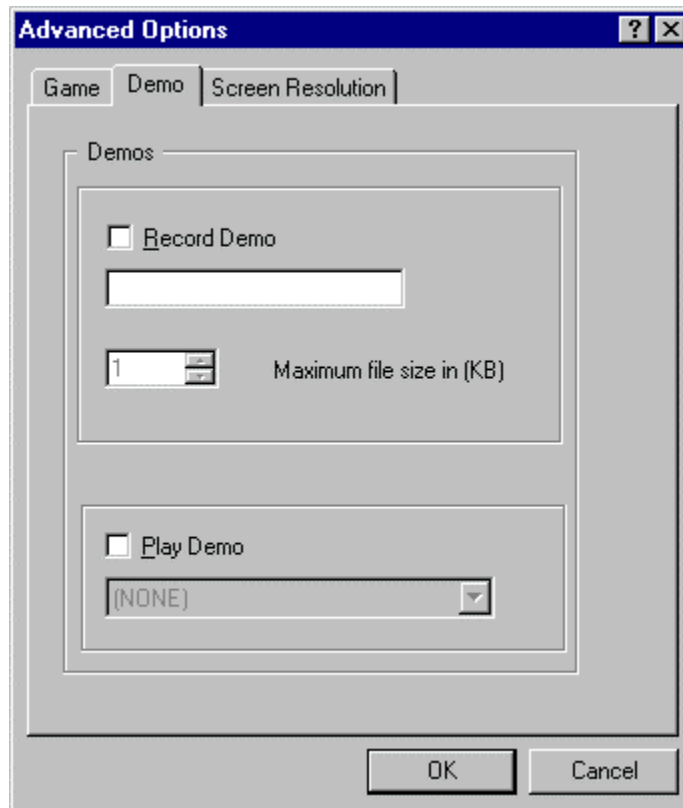
**(Timed Game) Minutes to run:** Specify a duration for your timed game.

**(Turbo Boost) Enabled:** Increase the movement speed of your player.

**(Turbo Boost) Turbo boost:** Specify a speed-up factor.

## Demo Settings

### THE DEMO PANEL



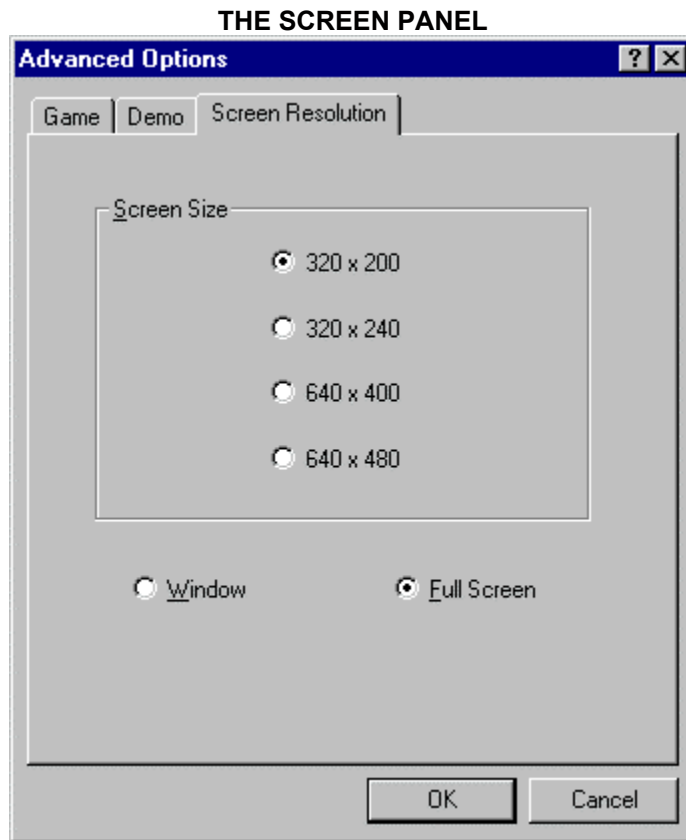
**Record Demo:** Record a demonstration “movie” of your game, which will be saved for later playback. The text box below allows you to specify a name for your demo.

**Maximum file size in (KB):** Specify how much memory (in K) should be allowed for recording.

**Play Demo:** Play back a demo recorded during a previous session. The dialogue box allows you

to select the name of the demo to be played back.

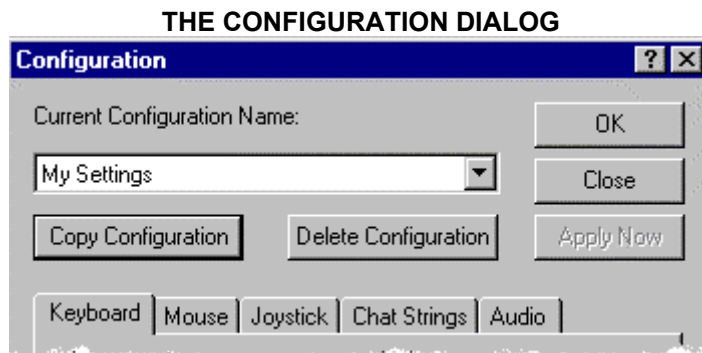
## Screen Settings



**Screen Size:** Select a screen resolution for your game. Larger resolutions provide clearer graphics, but can affect performance. Smaller resolutions increase the smoothness of the animation on slower systems.

**Window / Full Screen:** Start your game in a window or full screen. Specify full screen for the best performance.

## Configuration Settings



You can customize **DOOM II** to your personal taste in many ways. The **DOOM II** Launcher provides a Configuration Dialog for setting Keyboard, Mouse, Joystick, Chat, and Sound options. The Configuration Dialog, however, is only available from the main screen of the **DOOM II** Launcher before a game is launched — once the game has started, use the Doom Menus to set these options.

**Current Configuration Name:** Select from a list of previously saved configurations.

**Copy Configuration:** Name and save the current configuration settings.

**Delete Configuration:** Delete the currently selected configuration.

**OK:** Accepts all the changes made and dismisses the dialog.

**Close:** Ignores everything you've changed and dismisses the dialog.

**Apply Now:** Accepts all the changes made and leaves the dialog open. (This button is only active if you've made any changes.)

**Keyboard:** Opens the Keyboard Panel (see “**Keyboard Settings**” below).

**Mouse:** Opens the Mouse Panel (see “**Mouse Settings**” below).

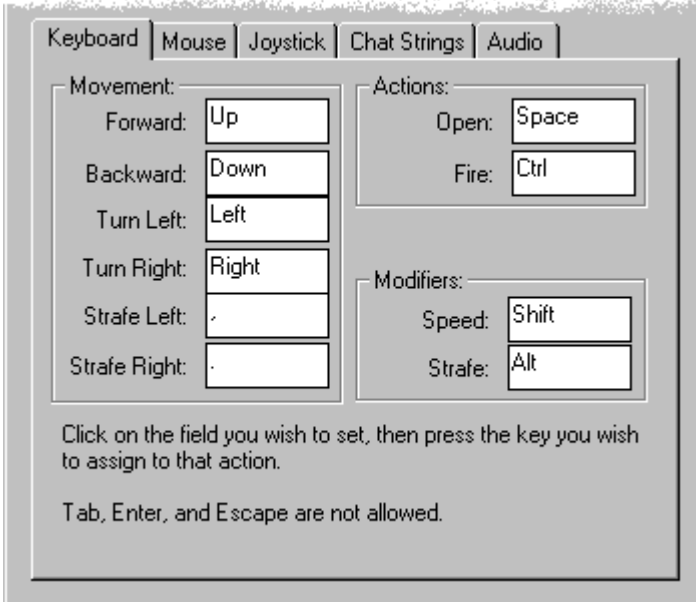
**Joystick:** Opens the Joystick Panel (see “**Joystick Settings**” below).

**Chat Strings:** Opens the Chat Settings Panel (see “**Chat Settings**” below).

**Audio:** Opens the Audio Settings Panel (see “**Audio Settings**” below).

## Keyboard Settings

### THE KEYBOARD PANEL



Keyboard	Mouse	Joystick	Chat Strings	Audio
<b>Movement:</b>				
Forward:	Up			
Backward:	Down			
Turn Left:	Left			
Turn Right:	Right			
Strafe Left:	.			
Strafe Right:	.			
<b>Actions:</b>				
Open:	Space			
Fire:	Ctrl			
<b>Modifiers:</b>				
Speed:	Shift			
Strafe:	Alt			

Click on the field you wish to set, then press the key you wish to assign to that action.

Tab, Enter, and Escape are not allowed.



**Forward:** Click here and press the key you want to use to move forward.

**Backward:** Click here and press the key you want to use to move backward.

**Turn Left:** Click here and press the key you want to use to turn left.

**Turn Right:** Click here and press the key you want to use to turn right.

**Strafe Left:** Click here and press the key you want to use to shuffle left.

**Strafe Right:** Click here and press the key you want to use to shuffle right.

**Open:** Click here and press the key you want to use to open doors and throw switches.

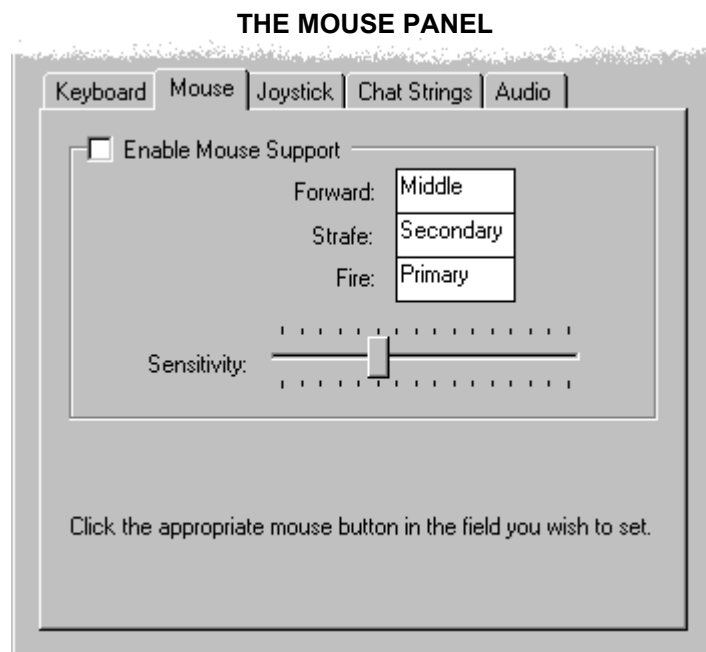
**Fire:** Click here and press the key you want to use to fire your weapon.

**Speed:** Click here and press the key you want to use to make all the direction keys move faster.

**Strafe:** Click here and press the key you want to use to change the turn keys into strafe keys.

*\*Note: If you change the default keys for movement and actions make sure you do not select a new key that is already used for another function. For example, if you change the up-arrow (move forward) to 3 (select shotgun) every time you press 3 you will move forward AND select the shotgun. The program does not prevent you from mapping two actions to the same key but this should be avoided.*

## Mouse Settings



**Enable Mouse Support:** Allows the mouse to control your primary movements.

**Forward:** Click here to set the mouse button that will make you walk forward.

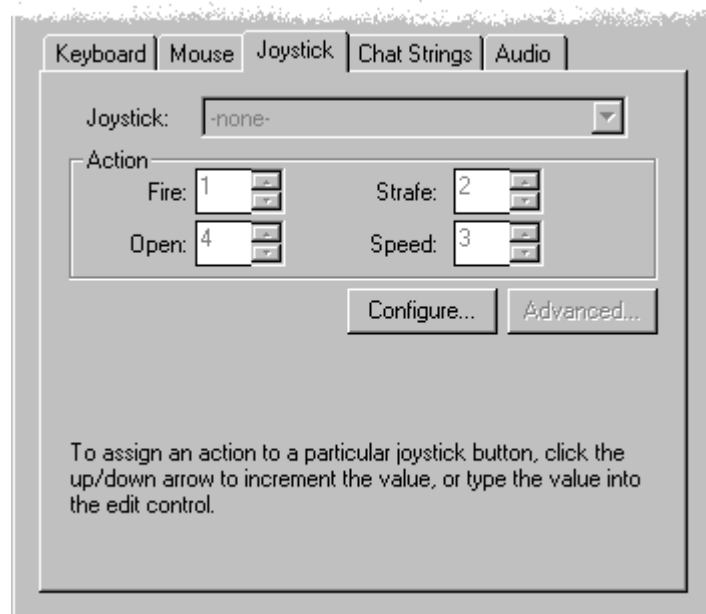
**Strafe:** Click here to set the mouse button that will change left/right motion into strafing instead of turning.

**Fire:** Click here to set the mouse button that will fire your weapon.

**Sensitivity:** Adjusts the speed with which **DOOM II** responds to your mouse movements. The higher the value, the quicker the response will be. If you are a beginning player, you might want to consider lower values. This setting applies to **DOOM II** only.

## Joystick Settings

### THE JOYSTICK PANEL



**Joystick:** A list of installed joysticks. Select the joystick you would like to use for **DOOM II**, or -none- to turn off joystick control.

**Speed:** Enter the number of the joystick button you want to use to make you move faster.

**Strafe:** Enter the number of the joystick button you want to use to change left/right motion into strafing instead of turning.

**Open:** Enter the number of the joystick button you want to use to open doors and throw switches.

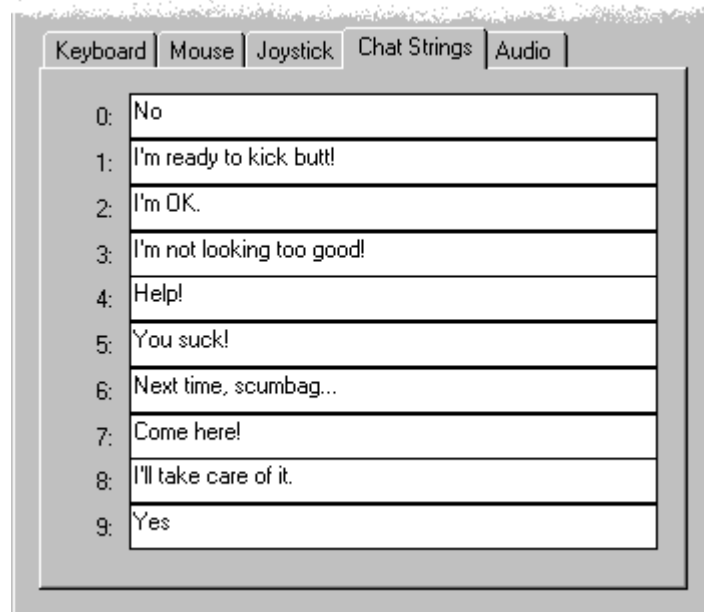
**Fire:** Enter the number of the joystick button you want to use to fire your weapon.

**Configure:** Launch the control panel joystick applet to configure, calibrate, and test joysticks.

**Advanced:** If the selected joystick has advanced options, they can be accessed with this button. If the button is grayed out, no advanced options are available.

# Chat Settings

## THE CHAT SETTINGS PANEL

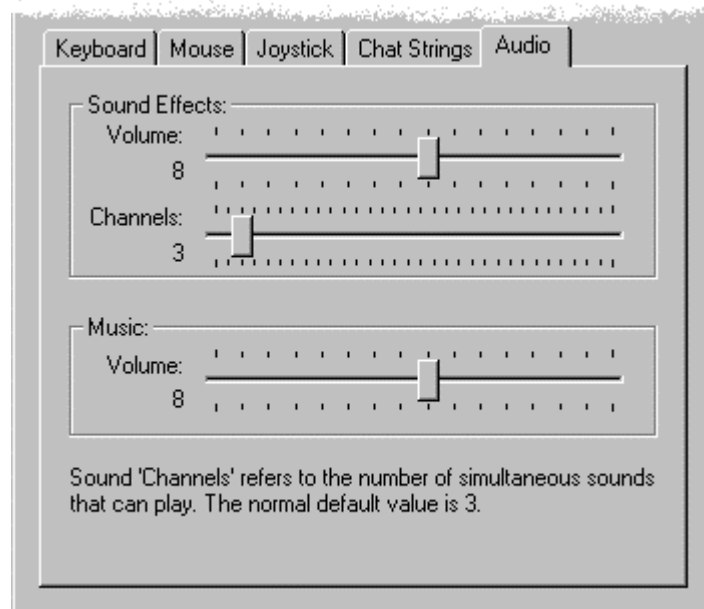


Use this panel to set chat strings. These strings can be sent to other players during multi-player games by pressing the corresponding number key.

**0-9:** Enter a chat string to be associated with a number key.

# Audio Settings

## THE AUDIO PANEL



**(Sound Effects) Volume:** Use this slider to set the volume of sound effects.

**Channels:** Use this slider to set the number of sound effects that will play simultaneously. The normal value is 3. Larger values will sound better, but may cause **DOOM II** to slow down.

**(Music) Volume:** Use this slider to set the volume of the background music.

## Using The **DOOM II** Menus

When you run **DOOM II**, you will start in the level you chose in the Episode/Level you selected (or at the point of the saved game you selected) in the Launcher. You can bring up the menu at any time by pressing the Escape key. Use the arrow keys, mouse, or joystick to move the skull cursor up and down. When the skull is adjacent to a desired selection, press the Enter key, left mouse button, or joystick Fire button to activate that selection.

Many of the Menu options can be activated directly by using a function key, thus bypassing the menus entirely. To exit the menu, press the Escape key or to return to the previous menu from a submenu press the Backspace key.

### **NEW GAME**

If you want to jump into the action, select this. **DOOM II** will ask you to set the difficulty level. Each difficulty level differs in the toughness of the enemies you'll face (see "**The Difficulty Levels**" below).

### **OPTIONS**

Goes to a menu of various game settings (see "**The Options Menu**" below).

### **SAVE GAME (F3)**

### **LOAD GAME (F2)**

Games can be saved or loaded at any time during the gameplay. To save a game, move the skull cursor to any empty slot (or one you don't mind writing over), and press the Enter key. This option is only available if you are currently in a game. To load a game, simply select the appropriate game from the Load Game menu.

**QUICKSAVE:** Pressing the function key **F6** allows you to Save a game without leaving the action. The first time QUICKSAVE is used in a given game, the standard Save menu appears. Select a slot. From then on, pressing **F6** automatically saves the game to that slot without interrupting the fun of smackin' baddies around. Pressing **F9** loads in the last QUICKSAVE game after prompting you.



**TIP:** Save your game and save it often. When you die, you're back to the beginning of the level, toting that little pistol again. That ain't good, especially after you progress to some of the tougher levels.

### **QUIT GAME (F10)**

Quit Game enables you to quit from **DOOM II** and return to Windows.

## The Difficulty Levels

### **I'M TOO YOUNG TO DIE.**

An easy romp through the playground. Not many monsters here. This is good when you're learning the controls.

## **HEY, NOT TOO ROUGH.**

This is good when you know how it works, but you still panic too much. Panic is a bad thing when you're surrounded by evil.

## **HURT ME PLENTY.**

The demons are out in force and they'll take great pleasure in hurting you as much as you let them.

## **ULTRA-VIOLENCE.**

So you think you're tough? Prove it!

## **NIGHTMARE!**

This is for those times when killing a guy once just isn't enough. If you're lucky, you'll wake up...

## **The Options Menu**

### **END GAME (F7)**

This allows you to end the current game without exiting to Windows or loading a new game.

### **MESSAGES (F8)**

In **DOOM II**, whenever you pick up an item, you'll receive information about the thing you just picked up. This option lets you toggle **DOOM II**'s messages on and off.

### **GRAPHIC DETAIL**

This option is not operational in **DOOM II** for Windows. To set the level of screen detail, use the Advanced Dialog of the Launcher before the game begins, or the **Alt -** and **Alt =** keys during the game.

### **SCREEN SIZE (+ and -)**

Just below this option is a bar with a sliding marker. When this option is selected, you can use the arrow keys to slide the marker back and forth to adjust the viewing area. A smaller viewing area increases the smoothness of the animation on slower systems.

### **MOUSE SENSITIVITY**

This selection lets you adjust the sensitivity of your mouse control. Just below this option is a bar with a sliding marker. When this option is selected, you can use the arrow keys to slide the marker back and forth to adjust the sensitivity of the mouse.

### **SOUND VOLUME (F4)**

This takes you to another menu where you can adjust the music and sound effects volume (see "The Volume Menu" below).

### **GAMMA CORRECTION (F11)**

On some monitors, **DOOM II** may appear too dark. Press the function key, **F11** to lighten the screen through five different brightness levels.

## **The Volume Menu**

### **Sfx VOLUME**

This selection has a bar with a sliding marker, allowing adjustment of the sound effects volume from "off" to "maximum."

### **MUSIC VOLUME**

This selection also has a bar with a sliding marker, allowing adjustment of the music volume.

# On-Screen Information

**DOOM II** provides on-screen information that's necessary to survive.

## THE STATUS BAR




**MAIN AMMO:** In big fat numbers, you see the number of shots you've got left in the weapon you're currently using.

**HEALTH:** You start out at 100%, but you won't stay there long. At 0% it's time to start over. Try a little harder next time!

**ARMS:** This list of numbers shows which weapons are available. If a number is highlighted, the weapon is accessible by pressing that number. ("1" is always available.)

**YOUR MUG:** This portrait isn't just for looks. When you're hit, your face looks in the direction from which the damage came, telling you which direction to return fire. Also, as you take damage you'll

begin to look like raw hamburger: 

**ARMOR:** Your armor helps you out as long as it lasts. Keep an eye on it, because when it goes, you might, too.

**KEY CARDS:** You can see any keys you possess right here. There are three key colors; Yellow, Red, and Blue.

**AMMO:** This shows how much of each type of ammo you're carrying and the maximum amount you could carry—if you had it.

## MESSAGES

Often you'll find yourself running over various items. **DOOM II** tells you what you're picking up by printing a message at the top of the screen—unless messages are off. Pressing RETURN will display the last message.

## THE AUTOMAP

To help you find your way around **DOOM II**, you're equipped with an automap device. By pressing the Tab key, you replace your normal view with a top-down map of everything you've seen up to date. The white arrow represents you, and points in the direction you're looking. You can zoom in and out by pressing "+" or "-." Press the number "0" to toggle between zoom and full view. To mark your location on the map, press the "M" key. This will place a number over your location. To clear all the numbers from the map, press the "C" key.

## MOVING IN THE AUTOMAP:

Using the arrow keys, you can move yourself while viewing the Automap. This is dangerous, since you can't see the enemy while viewing the Automap. To scroll the Automap without moving yourself, turn off Follow mode. Pressing the "F" key will toggle Follow mode on and off.





**TIP:** When traveling narrow passages many players have found it useful to examine the Automap in a magnified mode enabling them to see exactly where to step.

## Controlling The Action

Most of the play commands in **DOOM II** are a simple keypress away. You can use your keyboard, mouse, joystick, and combinations to move, pick up items, shoot, and open doors.

### MOVING

At first, you might find yourself bumping into walls while demons beat on you. Once you've got movement down, everything else follows.

### USING DOORS, SWITCHES & ELEVATORS

To open most doors and operate switches, stand directly in front of them and press the Open Key. Open is initially assigned to the [Spacebar](#) but may be changed in the Configuration dialog.

### PICKING UP STUFF

To pick up an object, just walk over it. You're smart, and know if you need to take it.

### COMPLETING AN AREA

At the end of each area in **DOOM II** there is an exit chamber. Enter this chamber and press the switch inside to exit the area and head onward. When you finish an area, an Achievement Screen tallies your performance. Hidden regions located, ratio of kills, percentage of treasure found, your completion time, and a par completion time are all displayed.

### ETERNAL LIFE AFTER DEATH

If you die, you restart the level at the beginning with a pistol and some bullets. You have no "lives" limit—you can keep restarting the level as often as you're killed. The entire level is restarted from scratch, too. Monsters you killed before are back again, just like you.

## Moving Around

**Walking:** Use the Forward and Backward keys to move in the direction you are facing. Forward is initially assigned to the [Up Arrow](#). Backward is initially assigned to the [Down Arrow Key](#).

**Turning:** The Left and Right keys turn you left and right. Left is initially assigned to the [Left Arrow Key](#). Right is initially assigned to the [Right Arrow Key](#).

**Running:** Hold down the Speed Key and the appropriate arrow key to speed yourself up. Speed is initially assigned to the [Shift Key](#).

**Strafe:** There are two ways to sidestep: use the Strafe Left and Strafe Right keys or use the Strafe key along with the **Turning** keys. Strafe is initially assigned to the [Alt Key](#). Strafe Left is initially assigned to the [Comma Key](#). Strafe Right is initially assigned to the [Period Key](#).

**Note:** Jumping is very important for successfully completing **DOOM II**. Though there is no Jump Key, you can leap from ledges by getting a running start. The faster you are moving the further you will go.

**Mouse Control:** If you would like to use your mouse to play **DOOM II**, you can do so by checking the "Enable Mouse Support" box in the Configuration dialog of the **DOOM II** Launcher. You can set your mouse buttons to Forward movement, Strafe, or Fire your weapon. For help in configuring mouse support, see "**Configuration Settings**" above.

**Note:** All of the movement commands listed in this “**Moving Around**” section may be reassigned to different keys in the Configuration dialog from the (see “**Configuration Settings**” above).





**TIP:** When you're comfortable playing the game, try using the keyboard and the mouse simultaneously. The mouse provides fine control for aiming your weapon (allowing you to smoothly rotate right or left) while the keyboard permits you to activate the many useful functions of the game.

## Doors, Switches & Elevators

(These objects all have many different appearances)



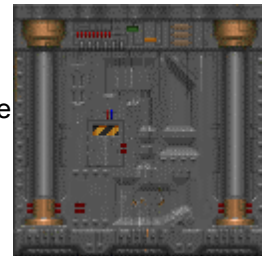
**SWITCHES:** When you successfully operate a switch, it will change in some way (lights up, flips a handle, etc.) If a switch does not change after a couple of tries, it is probably assigned to do a task that cannot yet be accomplished.

**LOCKED DOORS:** Some doors have security locks, and require you to have a color coded security card  or skull key  to open them. Other locked doors are operated by a switch on a nearby wall. Rather than walking up to the door, you'll need to operate the switch.



**HIDDEN DOORS:** Some doors are hidden. Many of these can be opened by finding a switch. In some cases you just need to walk up to the wall and press the Use Key. If you've found a secret door, it will open for you. There are clues that reveal a secret door—a wall that's shifted down or a different color, a flashing light on a wall, etc.

**ELEVATORS:** You'll see platforms that raise and lower. Some platforms operate continuously, while others must be activated. Some of them sense your proximity and lower automatically. Others have a nearby switch. Those without a switch can usually be operated by walking up to the platform and pressing the Use key



**TELEPORTERS:** Teleporters can be identified by an evil symbol on the floor beneath them. To use a teleporter, walk over the symbol.



# Firepower And How To Use It

**WEAPONS:** At first, you have only your pistol and your fists for protection. When you run over a new weapon, you'll automatically equip yourself with it. As the game progresses, you'll need to choose between firearms. The numeric keys select particular weapons (you cannot use the keypad keys for this selection). The weapons are:



**1 = Fist / Chainsaw**



Your iron-clad knuckles are a little better than nothing. Note: When you walk across the chainsaw it replaces your fist as the current weapon. Pressing the 1 key will toggle between your Fist and the Chainsaw.



**2 = The Pistol** is the only weapon you start out with. But you'll use anything in a pinch, no matter how pathetic it may feel.



**3 = Shotguns / Combat Shotguns** can deliver a heavy punch at close range and a generous pelting from a distance. Combat Shotguns are double-barreled, sawed-off killing sticks. These gats are the ultimate in pellet warfare. Beware, two barrels not only deliver more fire power, but take more time to reload. Pressing the 3 key will toggle between the Shotgun and the Combat Shotgun.



**4 = Chainguns** direct heavy firepower into your opponent, making him do the chaingun cha-cha.



**5 = Rocket Launchers** deliver an explosive rocket that can turn several baddies inside-out.



**6 = Plasma Rifles** shoot multiple rounds of plasma energy—frying some demon butt!



**7 = BFG 9000s** are the prize of the military's arsenal. Great for clearing the room of those unwelcome guests. Shoot it and see for yourself.

**FIRING:** To use a weapon, point it towards the enemy and press the Fire Key, or hold down the Fire Key for rapid fire. If your shots hit a bad guy, you'll see splattering blood. Don't worry if the enemy is higher or lower than you. If you can see a monster, you can shoot it. Fire is initially assigned to the **Control Key**. This may be changed in the Configuration dialog.

**AMMO:** Different weapons use different types of ammo. When you run over ammo **DOOM II** automatically loads the correct weapon.

Small	Large	Description	Weapon
		Bullets	Pistol, Chaingun
		Shells	Shotgun, Combat Shotgun
		Rockets	Rocket Launcher
		Energy Cells	Plasma Rifle, BFG 9000

You have a maximum limit on the amount of ammo you can carry, too. These are listed on the right side of your status bar. Also, when you find a weapon that you already possess, don't scorn it! Picking it up also gives you ammo.

## Dangerous DOOM II Environment

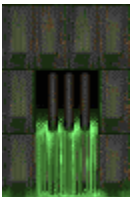
Some parts of the **DOOM II** environment can be more dangerous than the monsters you'll face. Areas containing exploding barrels, radioactive waste, or crushing ceilings should be approached with caution.



**EXPLODING BARRELS:** Scattered around the base are drums containing fuel, toxic waste, or some other volatile substance. If your shots hit one of these barrels, it's kablooey time! It might take several bullets to set off a barrel, but a single blast of any of the other weapons usually does the trick.



**TIP:** Barrels can often be the most devastating weapon in your arsenal—delivering a body-blasting explosion to all nearby purgatory pedestrians. Wait until several evil guys get next to a barrel and blast away at the can, then watch 'em all go boom!



**SLIME AND OTHER RADIOACTIVE WASTE:** Many of the areas in **DOOM II** contain pools of dangerous liquids that will damage you if you walk through them. There are several varieties of waste, each doing an increasing amount of damage. If it looks fluid, beware!

**CRUSHING CEILINGS:** Some of the ceilings in **DOOM II** can smash you, making you cry blood. Often you'll be able to see the ceiling moving before you go under it, but not always. Be careful and Save often!

## Health And Armor

Even for a tough hombre like you, **DOOM II** can be a deadly place. Whenever you are injured, the screen will flash red, and your health will decrease. Keep an eye on your health or you'll end up face down.

**HEALING:** When you're hurt, you'll want to get your health back as soon as possible. Fortunately, Medikits and Stimpacks are frequently scattered around the base. Grab them if possible.



**Stimpacks** give you a quick injection of booster enzymes that make you feel like a new man—at least, to a degree.



**Medikits** include bandages, antitoxins, and other medical supplies to make you feel a lot healthier.



**TIP:** Medikits and Stimpacks only improve your health up to 100%. Careful usage will let you take full advantage of their healing power.

**ARMOR:** Two types of body armor can be found laying around, Security Armor and Combat Armor. Both reduce damage done to you. Unfortunately, both deteriorate with use, and eventually are destroyed by enemy attacks, leaving you in need of replacement armor.



**Security armor** is a lightweight kevlar vest that's perfect for riot control.



**Combat armor** is a heavy duty jacket composed of a titanium derivative useful for protection against real firepower, like the kind you're gonna face.

If you're wearing armor, you only pick up a replacement suit if it provides more protection than what you're now wearing.

## Power-Ups

Other bits of "challenging electronics" may be found in **DOOM II**. Most of these are pretty doggone handy, so grab them when able. These special items have a duration of either the entire level, a specific amount of time, or just provide an instant benefit. A few of them affect your game screen so you can tell when they are active. For example, when you pick up a radiation suit, the game screen turns green. As the suit deteriorates the screen will flash. This is a hint to get out of the radioactive ooze now!



**Radiation Suits** provide protection against radioactivity, heat and other low-intensity forms of energy. Basically, these suits enable you to wade through the radioactive ooze without taking damage. While a suit holds out, your screen will have a greenish tint.  
Duration: Time Based



**Berserk Packs** heal you, plus act as a super-adrenaline rush, enormously boosting your muscle power. Since you're already a pretty meaty guy, this enhanced strength lets you tear ordinary dolts limb from limb, and you can even splatter those demons without too much trouble. However, you've got to use your Fist attack to get the benefit of the Berserk attack bonus. When you become Berserk, your screen will briefly turn red.  
Duration: Time Based



**Backpacks** increase the amount of ammo you can carry. In addition, whenever you find a backpack, you receive extra ammunition.  
Duration: Until You Die



**Computer Maps** are a handy find, updating your Automap with a complete map to the entire area, including all secret or hidden areas. Areas you haven't been to are mapped in grey.  
Duration: One Level



**Light Amplification Visors** allow you to see clearly even in pitch dark.  
Duration: Time Based

## Artifacts

A few artifacts from the other dimension are now laying around and you may want them.



**Health Potions** provide a small boost to your health—even past your normal 100%!



**Spiritual Armor** provides a little extra protection above and beyond your normal armor.



**Soul Spheres** are rarely encountered objects that provide a large boost to your health. A close encounter with one of these and you'll feel healthier than ever!



**Mega Spheres** combine the power of combat armor with the benefits of a Soul Sphere.



**Blur Artifacts** are strange orbs that make it difficult for others to spot you. The enemy can still see you, but most of their attacks will be less than accurate.  
Duration: Time Based



**Invulnerability Artifacts** render you immune to all damage. Pretty cool, until the effect wears off. When you're invulnerable your screen will be white—your punishment for being tough.  
Duration: Time Based

## The Enemy

From the very first moment you enter the door, till the last gunshot of the game, you'll be fighting a host of baddies. Some are just regular guys with a bad attitude, others are straight from Hell. Some of the monsters you'll face aren't shown here. Don't say we didn't warn you.



**TIP:** Create dissension among demons by maneuvering them into a crossfire. If a bad guy is hit by another demon, he'll turn his rage towards the poor jerk with the pitiful aim. If this happens, let 'em at each other—it's always best to let the bad guys do the work for you. (This isn't effective with projectiles fired between demons of the same form.)



**Former Human:** Just a few days ago, you were probably swapping war stories with one of these guys. Now it's time to swap some lead upside their head.

**Former Human Sergeant:** Same as the Former Humans, but much meaner, and tougher. These walking shotguns provide you with a few extra holes if you're not careful!



**Former Commando:** Geeze, weren't shotgun zombies bad enough? At least when you fade these jerks you get a cool chaingun.

**Imp:** You thought an imp was a cute little dude in a red suit with a pitchfork. Where did these brown bastards come from? They heave balls o' fire down your throat and take several bullets to die. It's time to find a weapon better than that pistol if you're going to face more than one of these S.O.B.s.



**Demon:** Sorta like a shaved gorilla, except with horns, a big head, lots of teeth, and harder to kill. Don't get too close or they'll rip your fraggin' head off.

**Spectre:** Great. Just what you needed. An invisible (nearly) monster.



**Lost Soul:** Dumb. Tough. Flies. On fire. 'Nuff said.

**Cacodemon:** They float in the air, belch ball-lightning, and boast one Hell of a big mouth. You're toast if you get too close to these monstrosities.



**Hell Knight:** Tough as a dump truck and nearly as big, these goliaths are the worst things on two legs since Tyrannosaurus Rex.

**Baron of Hell:** The Hell Knight was bad news, but this is Big Daddy. These bruisers are a lot like Hell Knights, but look a little different and are twice as tough to kill.



**Arachnotron:** Maybe cybernetics wasn't such a great idea after all. Look what the demons have done with it. It seems unfair somehow you're not the only guy in Hell with a plasma gun.

**Pain Elemental:** What a name. And what a guy. Killing him is almost as bad as letting him live.



**Revenant:** Apparently when a demon dies, they pick him up, dust him off, wire him some combat gear, and send him back into battle. No rest for the wicked, eh? You wish your missiles did what his can do.

**Mancubus:** The only good thing about fatso is that he's a nice wide target. Good thing, because it takes a lot of hits to puncture him. He pumps out fireballs like there was no tomorrow.





**Arch-Vile:** One of the worst of a bad lot. You can't think of enough rotten things to say about him. He's fast, hard to kill, casts spells, and resurrects dead monsters! At least these suckers are rare.

**The Spider Mastermind:** You guess the Arachnotrons had to come from somewhere. Hi, Mom. She doesn't have a plasma gun, so thank heaven for small favors. Instead, she has a super-chaingun. Crap.



**The Cyberdemon:** A missile-launching skyscraper with goat legs. 'Nuff said.

## Command Keys

This is a list of the key commands that cannot be changed in the Configuration dialog.

### The Function Keys

<b>F1</b>	Help
<b>F2</b>	Save Game
<b>F3</b>	Load Game
<b>F4</b>	Sound Volume
<b>F6</b>	Quicksave
<b>F7</b>	End Game
<b>F8</b>	Messages
<b>F9</b>	Quickload
<b>F10</b>	Quit
<b>F11</b>	Gamma Correction
<b>F12</b>	View Switching
<b>Pause</b>	Pause Game
<b>Esc</b>	Main Menu
<b>Tab</b>	Automap Toggle
<b>+</b>	Increase View Size
<b>-</b>	Reduce View Size
<b>Alt -</b>	Decrease Screen Resolution
<b>Alt =</b>	Increase Screen Resolution

### The Automap Keys

<b>F</b>	Follow Mode Toggle
<b>M</b>	Mark Current Position

C	Clear Marks
+	Zoom In
-	Zoom Out
0	Full Map Toggle

### The Weapons Keys

1	Fist/Chainsaw
2	Pistol
3	Shotgun/Combat Shotgun
4	Chaingun
5	Rocket Launcher
6	Plasma Rifle
7	BFG9000

## Multi-Player Instructions

Many of the rules for playing **DOOM II** change for the multi-player game. Read the following information carefully before you begin to play **DOOM II** in multi-player mode.

**MENUS:** When you activate the Options menu or submenus, the game **KEEPS RUNNING** so that other players can continue with the action. So it is best to find a safe place before adjusting screen sizes or sounds.

**UNPAUSE:** A player may Pause the game by pressing the PAUSE key, but any other player can Unpause the game by pressing the PAUSE key again. Make sure it's OK with your buddies before taking a breather.

**SAVE:** When you do a save game during a network game, it saves on every player's system in the save game slot you select, writing over whatever was there. Before saving the game, players should agree on a safe slot to save in.

**LOAD:** You cannot load a saved game while playing a multi-player game. To load a game everyone must quit from the current game and restart the game from the saved game, which is specified using the Launcher.

**WEAPONS:** When a player runs over a weapon he picks it up, but the weapon remains in the game for other players to take.

**DEATH:** If you die and restart in the level, previously taken items and destroyed monsters **DON'T** reappear. Even though you've died, other players have survived. We didn't want to undo all of their fine destruction by reviving every monster in the area. However, this also means the level will eventually run dry of monsters and ammunition. You'll have to decide when the level is played out.

**UNIFORM COLORS:** In multi-player games, each player's uniform is a different color. The color of your character is the color behind your face on the status bar. The colors are **BROWN**, **INDIGO** (black), **GREEN**, and **RED**.

**CHAT MODE:** In a multi-player game you can communicate with other players in the Chat mode. To enter into Chat mode and broadcast a message to all the players, press the letter 'T'. A cursor will appear where your messaging is normally placed. To broadcast to a specific player, instead of pressing 'T' you'll need to press the first letter of the player's color. (B)rown, (I)ndigo, (G)reen, and (R)ed. For example, to send a message to the brown character, you

would press the letter 'B'.

**CHAT MACROS:** In a multi-player game, you can send your own pre-defined macros (defined in the Launcher program) by initiating Chat mode (as described above), then holding ALT and pressing the number key that corresponds to the macro you wish to send. For example, if macro #2 is "Eat it and die!", initiate Chat mode by pressing 'T', then hold down ALT and press 2.

**EXITING A LEVEL:** When one player exits a level, all players instantly exit with him, regardless of their position or their status.

### **COOPERATIVE OR DEATHMATCH MODE**

There are two ways to play multi-player—DeathMatch and Cooperative. In Cooperative mode the players work together. In DeathMatch mode your mission is to kill everything that moves, including your buddies. You can choose which mode you wish to play using the Launcher. The differences between Cooperative and DeathMatch mode are as follows:

**WHERE YOU START:** In Cooperative mode each player begins in the same area. In DeathMatch mode the players begin in completely different areas—if you want to see your buddy you'll need to hunt him down. Plus, each time you die, you'll restart in one of several random locations.

**KEYS:** Unlike in single-player or Cooperative mode gameplay, in DeathMatch mode the players start each location with the keys necessary for opening any locked door in that area.

**STATUS BAR:** In DeathMatch mode the ARMS section on the status bar is replaced with "FRAG." The FRAG section displays the number of times you've killed your opponents.

**AUTOMAP:** In Cooperative mode the Automap works the same way it does in single-player mode. Each player is represented by a different color arrow. In DeathMatch mode you won't receive the pleasure of seeing your opponents on the map. Just like the monsters, your friends could be just around the corner, and you won't know until you face them.

**SPY MODE:** If you're playing in Cooperative mode, press **F12** to toggle through the other players' viewpoint(s). Press any other key to return to your view. You still retain your own status bar at the bottom, and if your view reddens from pain it is **YOU**, not your partner, who has been hit.

**INTERMISSION SCREENS:** In both Cooperative and DeathMatch mode the intermission screen tallies your achievement. In Cooperative mode the intermission screen lists the achievements for all players in the game. In DeathMatch mode the intermission provides a death count on everyone, letting you know who killed whom.

### **DEATHMATCH MODE GAMEPLAY NOTES**

The rules for completing or winning a DeathMatch game have intentionally been left general. Any player can exit an area and force all of the players to move to the next area. Also, there is no limit on how many kills are required to declare a player the winner. We decided to leave this up to you. You know what you like best!

*Note:* Before you play **DOOM II** in DeathMatch mode you should be familiar with the layout of every area in **DOOM II**. In DeathMatch mode your startup location is random and often in an area that is very hostile.



# Credits

## Credits for the original **DOOM II**:

ID SOFTWARE IS....

BIZ  
Jay Wilbur

SOFTWARE ENGINEERS  
John Carmack John Romero Dave Taylor

ARTISTS  
Adrian Carmack Kevin Cloud

DESIGNER  
Sandy Petersen

DESIGN AND TECHNICAL SUPPORT  
Shawn Green American McGee

BIZ ASSISTANT  
Donna Jackson

## SPECIAL THANKS TO:

Music and Sound Effects  
Robert Prince

Model Development  
Gregor Puchatz

Sound Driver  
Paul Radek

Cover Illustration  
Gerald Brom

## Credits for this reissue:

### FOR ACTIVISION

#### Production

Thaine Lyman	Producer
Laird Malamed	Sr. Executive Producer
Matthew Beal	Production Tester
John Fritts	Installer

Special Thanks: Mark Lamia, Steven Rosenthal, Larry Goldberg

**Global Brand Management**

Brad Carraway Associate Brand Manager  
Kevin Kraff Brand Manager  
Dusty Welch Sr. Director Global Brand Management

**Quality Assurance**

Glenn Vistante QA Project Lead

**QA Test Team**

Thad Sasser, John Sweeney, Steve Glick, Daniel Ko, Chris Wagener, Jane J. Lee

**QA Special Thanks**

Jim Summers, Jason Wong, Sam Nouriani, Juan Valdez, Tim Vanlaw, Jeremy Gage, Rob Lim, Bob McPherson, Ed Clune, Marco Scataglini, Todd Komesu, Chris Keim, Neil Barizo, Jason Kim, Brad Saavedra, Jen Vitiello, Matt McClure.