

SCANIA

Truck Driving Simulator
The Game



MANUAL



SCS SOFTWARE

Welcome to SCANIA Truck Driving Simulator - The Game

Put your Truck driving skills to the test in **SCANIA Truck Driving Simulator –The Game!** Once you've completed basic training hopefully you'll be up to mastering the wide variety of tasks that lie ahead. Manoeuvring these huge vehicles is not easy especially when you are up against the clock and need to make sure you deliver those valuable goods in pristine condition – your reputation depends on it!

Getting Started

System requirements

Minimum System Requirements:

Operating system: Windows XP/Vista/7
Processor Dual core CPU 2.4 GHz
2 GB system memory
Dedicated graphics card with 256 MB memory (GeForce 7600 GT-class equivalent or better)
DirectX 9 compatible sound card
DirectX 9.0
1.5 GB of free hard drive space

Recommended System Requirements:

Dual core CPU 3.0 GHz
4 GB system memory
Dedicated graphics card with 1024 MB memory (GeForce GTS 450-class equivalent or better)

Installation

To install **SCANIA Truck Driving Simulator** insert the game DVD into your DVD-ROM drive. Follow the on-screen instructions to complete the set-up process. If installation fails to start automatically, proceed by following these steps:

1. Open My Computer
2. Select and open your DVD-ROM drive
3. Find setup.exe and execute it
4. Follow the on-screen instructions to complete the set-up process

Quickstart - Launching **SCANIA Truck Driving Simulator**

1. Start by clicking the **"SCANIA Truck Driving Simulator"** icon on your desktop, or
2. Going to your programs menu and selecting to play **SCANIA Truck Driving Simulator – The Game**, the default path should be **"Start" -> "All Programs" -> "SCANIA Truck Driving Simulator" -> "Play SCANIA Truck Driving Simulator"**.

Create driver screen

When you first start SCANIA Truck Driving Simulator, you will be taken to the Registration screen.



At this point you decide whether to use the full potential of the game, in terms of access to the online leaderboard, or to be content with testing your skills without comparing the results with players around the world.

- a. If you are not interested in the online component of the game, you can continue clicking on the **"No thanks, I will play offline"** button.
- b. If you choose to utilize the **full potential** of the game, please **follow the next points**.
 1. If you already have an online account, skip to point 6.
 2. Click on **"Register now" button**.
 3. The registration page on the game's official website will be opened in your web browser. **Fill in the necessary information** and click **"Create Account" button**.
 4. You will receive an e-mail **message with activation link**. Click on the link to **activate your account**.
 5. Return to the game.
 6. **Enter the name or email** used to create account.
 7. Enter **password**.
 8. Specify whether the application should remember your password. In case you decide not to have your password stored and automatically entered by the game, it will be required every time you launch the game.
 9. Click on the **"Next" button** to verify your credentials.

Driver profile creation screen

When you login to an existing online account, or offline play option, you will be moved your **Driver profile creation screen**.



1. Enter your **nick name**. (This option is available only for offline play. For online account, the name of the player profile automatically uses the account name).
2. Select the preferred **colour** for your truck.
3. Select the preferred side for the location of the steering wheel.
4. Choose the **driver's appearance**.
5. Click on **"Create profile" button** to have your in-game "avatar" created and to continue to the Main menu.

Main Menu

Having selected your driver profile you will be shown the **Main menu** screen. On the left side of the screen, you choose from the various **game features**.



Main menu Screen

Driving License — Select the challenge you want to attempt – note: only the easy challenges are available at the start. As you complete each task, more difficult tasks become unlocked and available for you to try.

Driver Competition— Take part in a dozen disciplines inspired by Young European Truck Driver competition - the virtual re-creation of Scania Driver Competition events. Learn the tricks to navigate your truck with centimetre precision!

Freeform Driving— Deliver a variety of cargo across an expansive region of land centred around an industrial city. Enjoy complete freedom in the choice of freight to pick while exploring the environment.

Dangerous Drives— Face realistic scenarios requiring extreme caution and skill - mountain roads, bad weather, forces of nature blocking the easy route, it's your mission to get to the destination safely!

Time Reaction Test — How fast can you step on the brakes when you suddenly get into a dangerous situation? Check your reaction time and understand how it affects the stopping distance.

Gallery & Media— Feast your eyes on a vast gallery of Scania vehicles photos and videos. Check out highlights from previous seasons' Young European Truck Driver competition to whet your appetite to match the performances of the true masters of trucking.

Online Resources— Recommended Internet links for more information about the truck simulation games phenomenon. Find out more Scania Driver Competitions and Scania trucks. Follow us on the official website, Facebook, blog, YouTube, and Twitter.

The bottom bar on Main menu screen:

Drivers — Manage, create or edit Driver profiles.

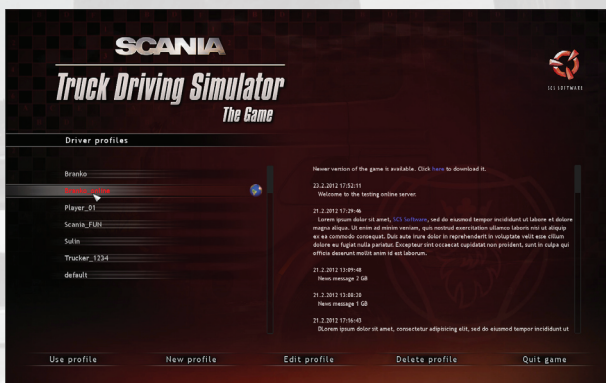
Options — Configure the game and adjust controls.

Credits — Learn more about the creators of the game.

Quit game — Select this option to leave the game and return back to Windows.

Drivers

On this screen, you can work with driver's profile. You can log on to existing Driver Profile, or make a new one, also you can edit existing Driver Profiles.



Use profile — Sign on to the selected profile in the list of drivers.

New profile — Switch to a screen where you create a new driver.

Edit profile — gets you to the screen where you can change basic settings of already existing driver profile.

Delete profile — Deletes selected driver from the list of drivers.

Quit game — Select this option to leave the game and return back to Windows.

Profiles that bind to an online account and have access to online leaderboards. Next a driver profile name in the list of Drivers, they have this rotating globe symbol:



CNS 857

Options

Here you can adjust the game settings to suit your computer and style of driving. Select from the following options...

Gameplay:

- **Language** — Choose the language in which you would like to play the game.
- **Gearbox/Transmission** — Set whether you want to shift gears manually, or use game-assisted automatic shifting.
- **Show On-Screen Tachometer** — Turn it on and off.
- **Show On-Screen Mirrors by default** — Turn them on and off.
- **Start with engine running** — should the engine be on already by default anytime when a game level is started?
- **Guidance Hints** — Turn them on and off.
- **Online news** — Showing news about game updates on profile selection screen.

Keyboard:

Here you can reassign the keys. Just click on the action you wish to remap and press the new key (or press Esc to cancel).

Controller:

Here you can adjust how your game controller effects the game.

Display:

Here you can change resolution and set your own balance between how the game looks and its performance.

Audio:

Here you can adjust the volume of the music and sound effects or reverse stereo.

Driving Your Truck – the Controls

You can completely reassign the control keys through **“Options”** -> **“Keyboard”** menu.

The supported game controllers are:

- Keyboard (only)
- Keyboard + Mouse
- Keyboard + Controller

Select the desired controller combination in the selection box at the top and make sure to configure your controller properly before playing!

Challenges Screen

By selecting one of the game scenarios in the main menu screen, you will get to the **Challenges Screen**.



Challenges Screen is organized into the following sections...

Challenge list — Select the task you want to attempt – note: typically only the easy challenges are available at the start, as you complete each challenge more difficult ones are unlocked and available for you to try.

Challenge description — Read the context and goal of each challenge to understand your task.

Top players – Once you've completed a challenge a recording of your performance will be listed here. Click Play icon to see a video replay of selected drive. After click on the title bar, you may choose from several types of displayed leaderboard [Top Drivers, Top drivers on this computer and Top results of current Driver]

Start driving! — When you are ready select this and your chosen task will load!

Main menu – Gets you back to main menu screen.

Challenges

Having pressed Start Driving! your selected challenge will load and you'll be shown a brief introductory video which will brief you on the task ahead. Press Esc to leave the briefing and you'll find your self sat in the driver's seat of your truck.

You should aim to complete the task as quickly as possible, remember...

1. Do not crash your truck.
2. Do not damage your cargo.
3. Park in the designated area – when asked to.
4. Park facing the correct way – when asked to.



In the **free ride**, on the screen in the bottom right, there is a **map of area** available. It shows cargoes that are currently available for you. If a cargo icon is more transparent on map, it means that it is located farther from the player.

Green point – The place to pick up trailer with a easy to delivery cargo.

Red point – Cargo delivery demands more difficult parking manoeuvre.

Black and white point – point indicating the current task duties.

Gray point – If you disconnect the trailer when in transport, this marker shows you its location on the map.

On-Screen Messages

While driving, you will receive various important messages. They will provide you with helpful information including all sorts of notifications and helpful hints.

Main Vehicle Controls

Forward / Throttle	Up Arrow	W
Backward / Brake	Down Arrow	S
Steering Left	Left Arrow	A
Steering Right	Right Arrow	D
Shift Up	Left Shift	Right Shift
Shift Down	Left Ctrl	Right Ctrl
Start / Stop Engine	E	--
Parking Brake	Space	--
Motor Brake	B	--
Left-Turn Indicator	[--
Right-Turn Indicator]	--
Hazard Warning	F	--
Headlights	L	--
Horn	H	--
Wipers	P	--
Cruise Control	C	--

Cameras

Inside Camera	1	--
Window Camera	2	--
Free Rotate Camera	3	--
Top Camera	4	--
Cabin Camera	5	--
Bumper Camera	6	--
Drive-By Camera	7	--
Next Camera	9	--

Special Actions

Look Left	Num pad /	--
Look Right	Num pad *	--
Trailer Attach /Detach	T	--
Show/Hide Wing Mirrors	F2	--
Show/Hide UI	F3	--
Display mode	I	--
Rotate Camera	Left Alt	--
Screenshot	F10	--
Audio Player	R	--
Exit	Esc	--

Contacts

SCS Software web site: www.scssoft.com

Official Scania Truck Driving Simulator – The Game website:
www.scaniadrivergame.com



The game was developed with kind co-operation of Scania CV AB.

All inquiries and technical support requests should be directed at SCS Software,
please contact us at support@scaniadrivergame.com

© 2012 SCS Software. All rights reserved.