



Ropeway-Simulator 2014



Game Manual



kindly supported by



Before you start

Before installation, make sure that your computer fulfils the necessary system requirements:

- Windows Vista/7/8
- CPU: Dual-Core 3 GHz (minimum), Quad-Core 3 GHz or better (recommended)
- 4 GB RAM
- Graphics: (dedicated) 1GB: Nvidia GTS 240 or AMD Radeon HD 7550 +
- 5 GB of free hard drive space

Installation

The CD menu will run automatically after placing the CD in the drive. If it does not start automatically, please follow the instructions below:

Click on the round Windows symbol in the lower left corner of the task bar and enter "D:\Setup.exe" in the search field. Then press ENTER.

"D" stands for the designated name of your CD-ROM drive. If your CD-ROM has another drive name, you should replace "D" with the appropriate name.

The menu will open and the installation process for Ropeway Simulator 2014 will start. Please follow the instructions given in the setup program. After the successful installation start the program by choosing Start/Programs/ Ropeway Simulator 2014 /Game Ropeway Simulator 2014 in the Windows start menu or by clicking on the corresponding desktop icon.

If you receive security alerts when starting the autostart menu in Windows Vista, Windows 7, or Windows 8, you can safely confirm that you want to run the "Setup.exe" program.

Getting started

Welcome to the mountains!

You are the builder and owner of a whole series of ropeways, which continually provide you with new challenges. This guide will provide an overview of the basics of the game and a few useful hints that will help you get right into the action.

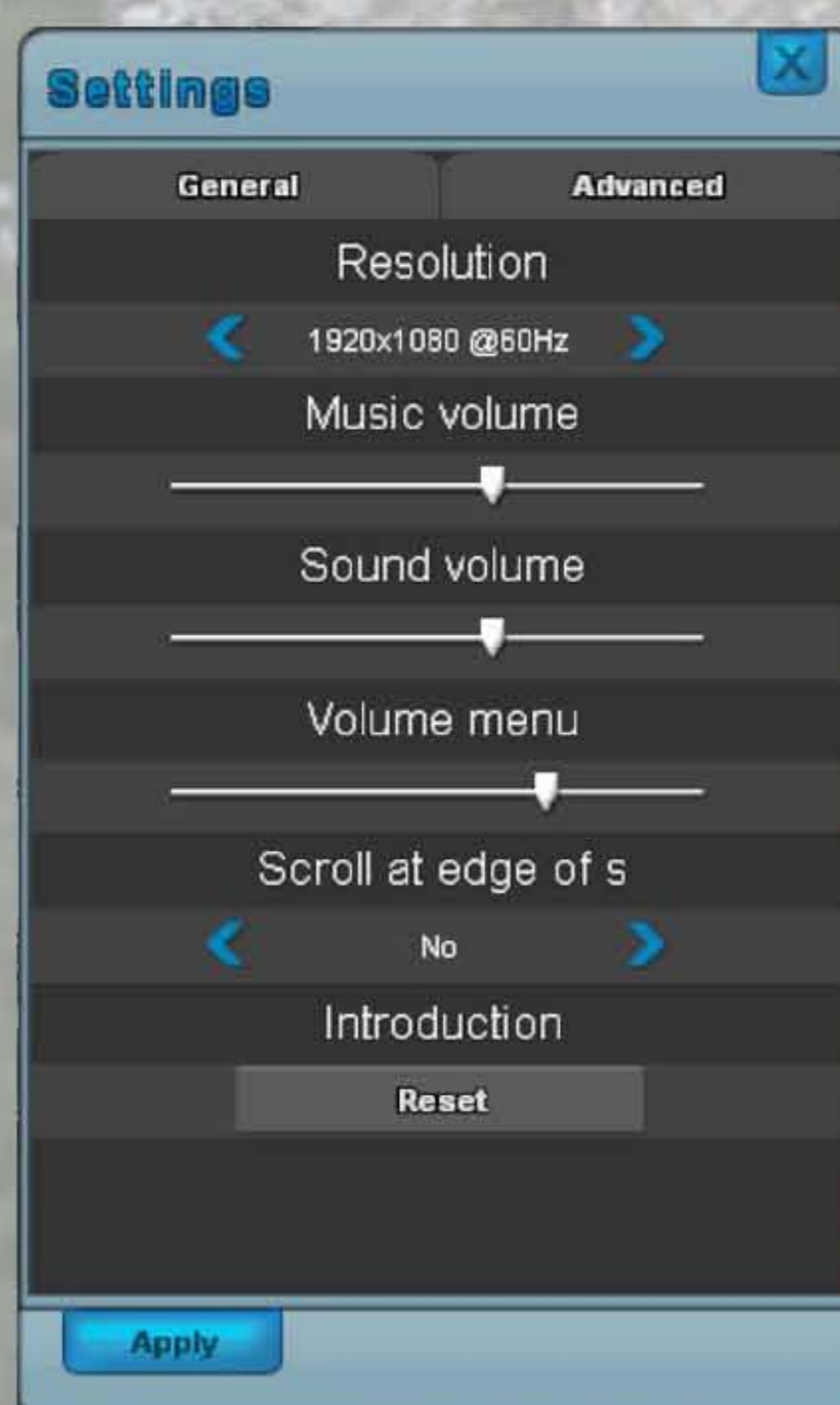
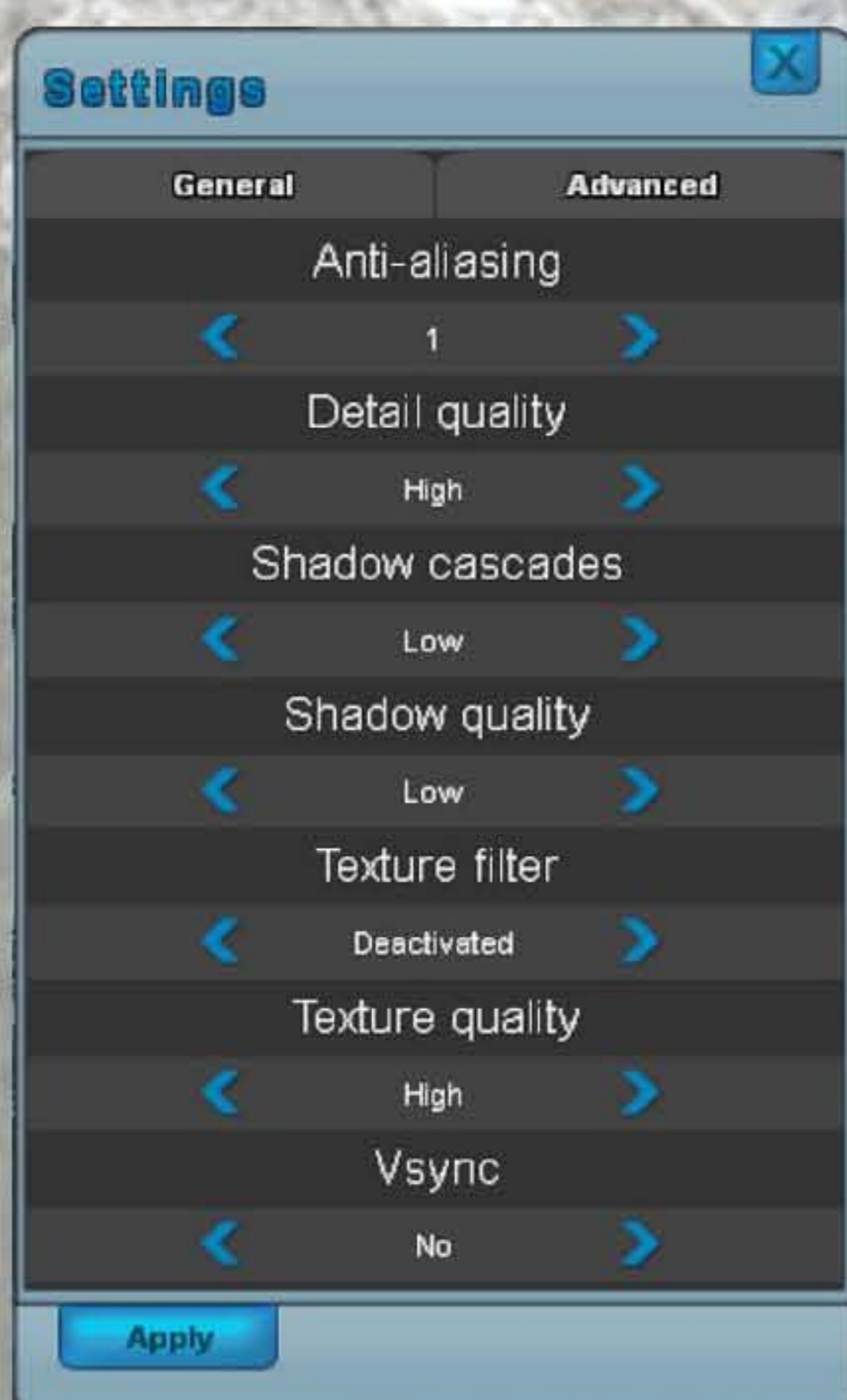
Main Menu

In the main menu you can continue your current game, start a new game from the beginning, load a saved game, adjust the graphics and audio settings, and view the game credits. By clicking on the lower left corner you can leave the game.



Settings

Here you can change a whole series of game settings. Depending on the speed of your computer you have a number of options for fine tuning the audio and visual quality. If the game does not run smoothly you can start with the lowest settings and gradually increase them until you achieve optimal results.



Controls

You control almost the complete game by using the mouse. The following is a list of actions.

Select object/ carry out action	Left mouse button
Move	W A S D / Mouse
Rotate camera	Right mouse button + mouse movement
Zoom +	Mouse wheel forward
Zoom -	Mouse wheel backward
Pause/Menu	ESC

New Game

When you start a new game you have to choose whether you want to begin the summer or the winter scenario first. Each scenario offers 10 areas with many hours of gaming enjoyment.

Here is a view of the summer map:



And here is the winter map:



Each scenario offers its own challenges, and you have a total of 20 areas at your disposal.

As soon as you have chosen a setting you will always begin with a starting area. You will then have to unlock the other areas one by one in the course of the game. The areas that are currently locked are labeled “Not available.”

The Toolbar



In the game itself you will always find the toolbar at the bottom of the screen. The following descriptions will explain the individual symbols from left to right.

Compass

The compass shows the direction of your latest mission. Follow the blue pointer.





*Ropeway-
Simulator* 2014

Construction

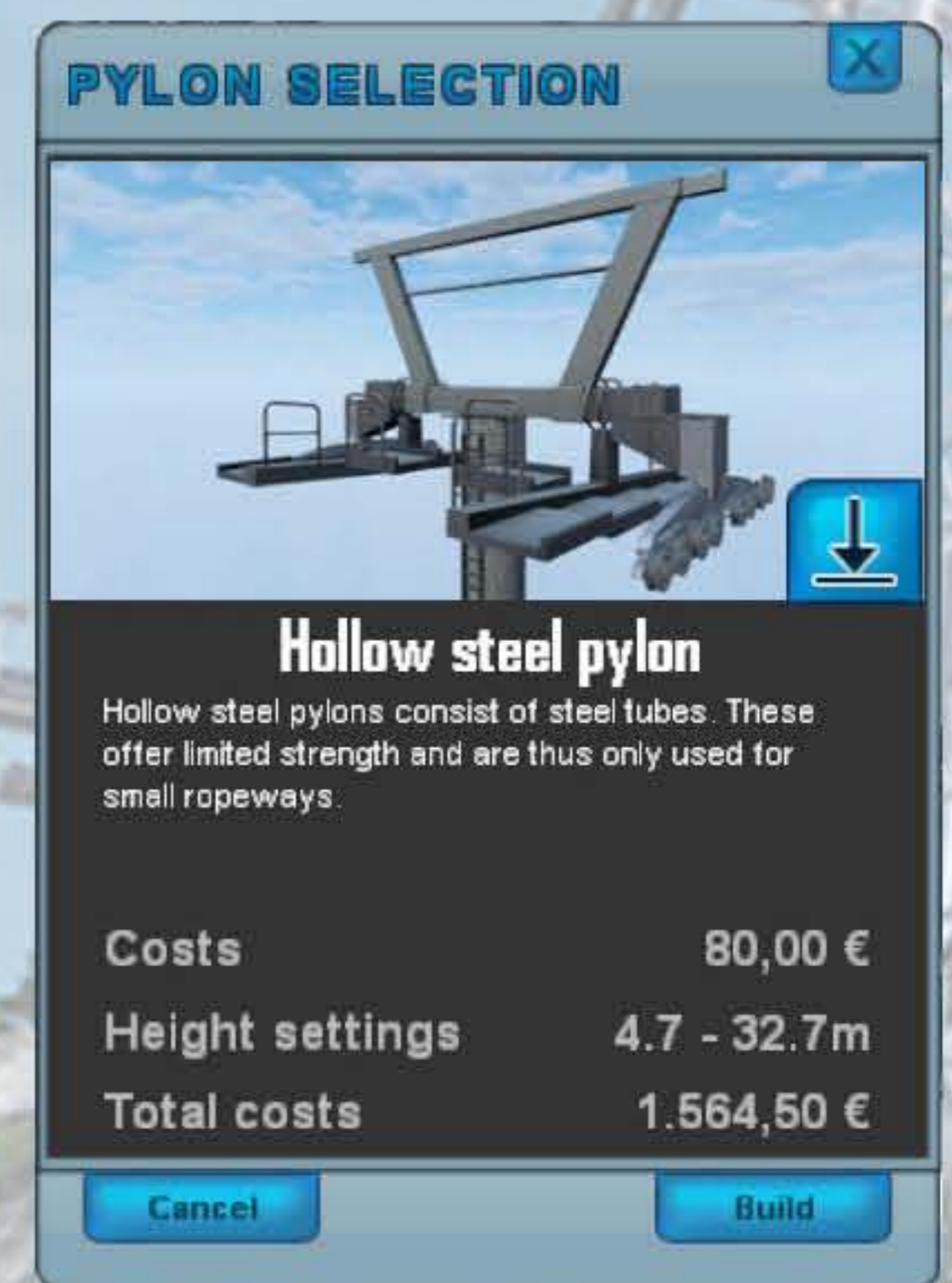
Click on the crane symbol to activate the construction mode for ropeways. Now choose one of the areas marked in blue on the map in order to place your first ropeway station. At the beginning you only have a limited number of ropeways available. However, you can change this soon by using research (the third symbol from the left)! As soon as you have researched several designs you can select them with a click on the arrow before placing them.

Hint: Certain stations can/must be placed on some fields.

Placing pylons




After you have placed a station a window will open. Here you can see the cost and vertical height of the ropeway. Click on the blue arrow in this window to place a pylon.

After you have placed a pylon, you will have to adjust it. For this purpose another window will open automatically. Here you can adjust the height (1), the rolling curve (2), and the rolling angle (3) on the pylon, and if necessary, move the pylon to another location free of charge.



Adjust the settings until the ropeway cables are no longer red, but black instead, and none of the following symbols is visible.



		
Pylon too low	Cable at wrong angle	Pylons too far apart
Raise the pylon so the cables are high enough above the ground	Change the base angle and/or the curvature to avoid bending the cable or putting it under too much stress	Move the pylons and possibly build more to achieve a shorter distance between pylons

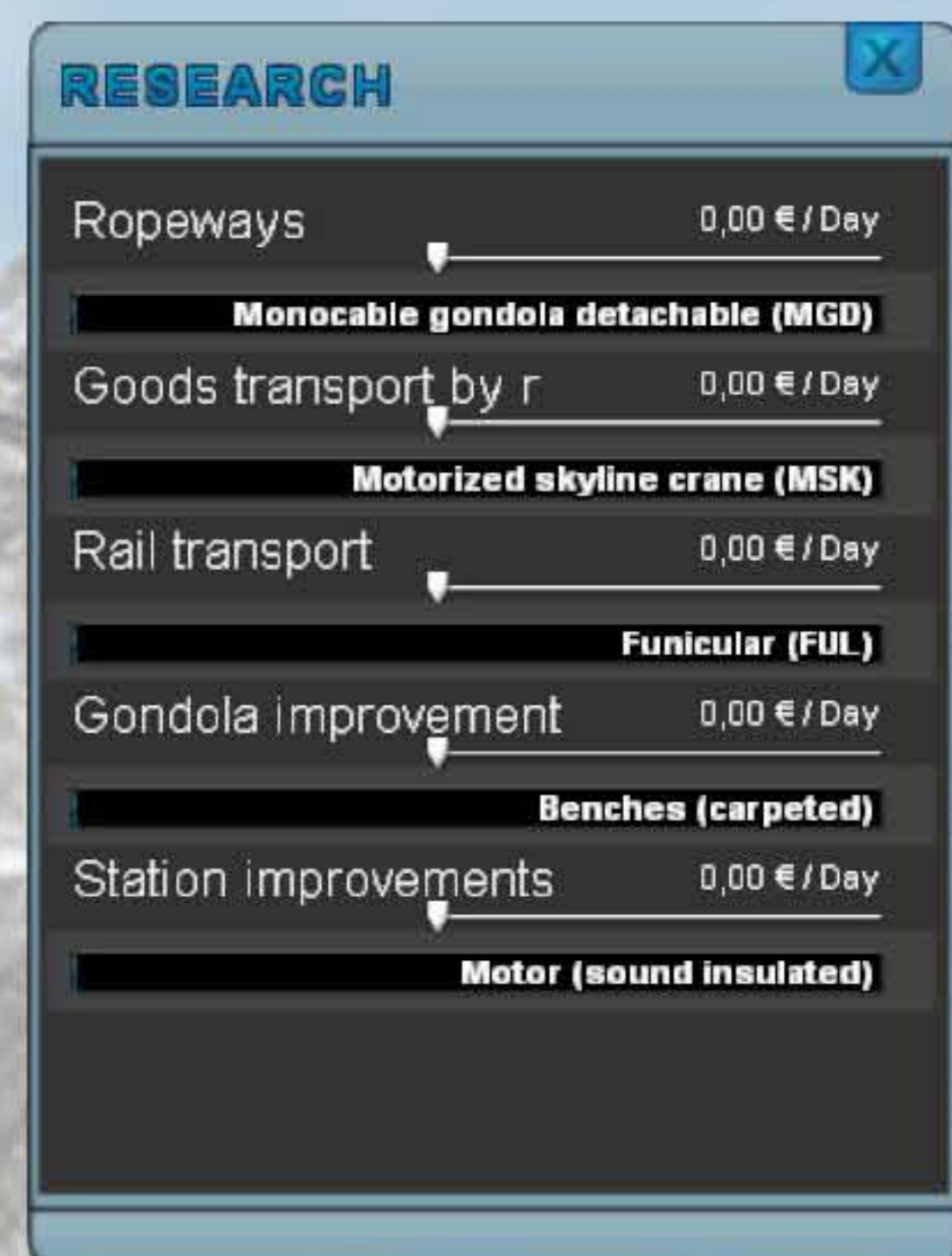
Hint: You can save the settings for the pylons any time. These can always be adjusted by clicking on the pylon.

When you have successfully adjusted your ropeway you can complete it by clicking on "build." **Do not forget to set the ticket price!**

Hint: As long as the ticket price remains in the turquoise area the visitors will not complain about the price and will gladly use this ropeway.

Research

Click on the test tube symbol in order to open the research box. Here you can research new ropeways and upgrades. Increase the level of one or more areas in order to invest more money in research, and you will see advancement soon.



Loans

Click on the dollar symbol in order to open the loans menu. Here you can borrow money for your business. Use the control bar to choose the desired duration and amount. Then click on "Accept" to activate your loan.

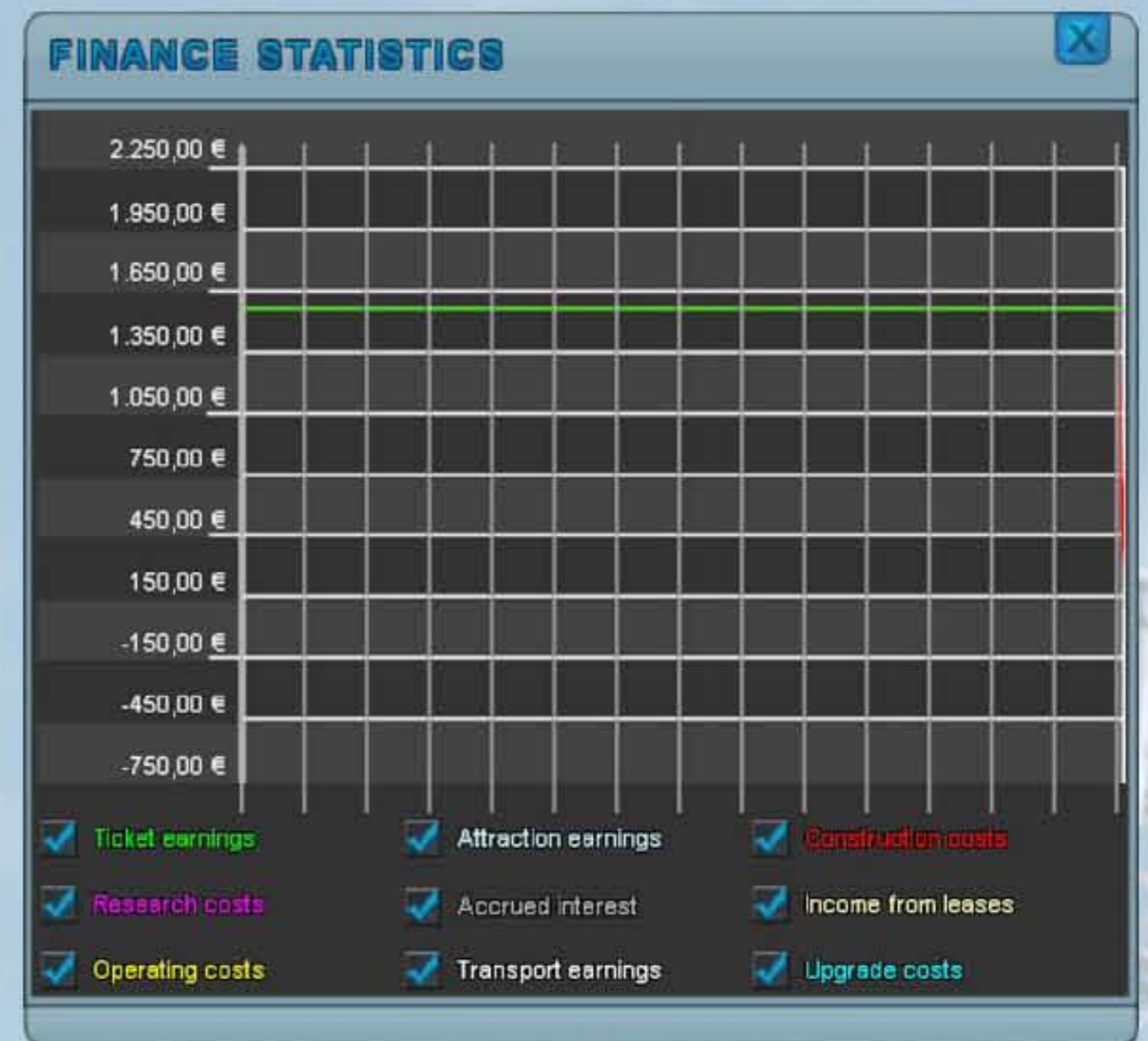
Hint: You can take out several loans at one time.



Finances

Click on the table symbol to open an overview of your finances. Here you will see detailed information on your finances.

Hint: You can add and remove individual elements in your finances overview by clicking on the corresponding boxes.



Statistics

Click on the graph symbol to open the statistics window. Here you can see an overview of your visitors, finances, and other interesting information all in one place. These are divided up and placed under three tabs. Simply click on the corresponding word "Finances", "Visitors", or "General" at the top in order to switch between the three.

Hint: Under Statistics you can find all of the most important information about your business in one place.

The screenshot shows a window titled "STATISTICS" with a close button in the top right. It has three tabs: "Finances", "Visitors", and "General". The "General" tab is selected, showing a table of financial data:

Category	Value
Current budget:	20.020,70 €
Outstanding loans:	0,00 €
Credit limit:	10.000,00 €
Ticket earnings (7D):	0,00 €
Attraction earnings (7D):	0,00 €
Construction costs (7D):	0,00 €
Operating costs (7D):	-0,40 €
Upgrade costs (7D):	0,00 €
Lease interest (7D):	0,00 €
Accrued interest (7D):	0,00 €
Research costs (7D):	0,00 €
Transport earnings (7D):	0,00 €

Navigation

A click on the globe symbol will open the Navigation window. Here you can see a list showing all of your ropeways as well as a list (beside it on the right) showing all of the attractions that you have purchased. Furthermore, you can view the condition of your ropeways and attractions.

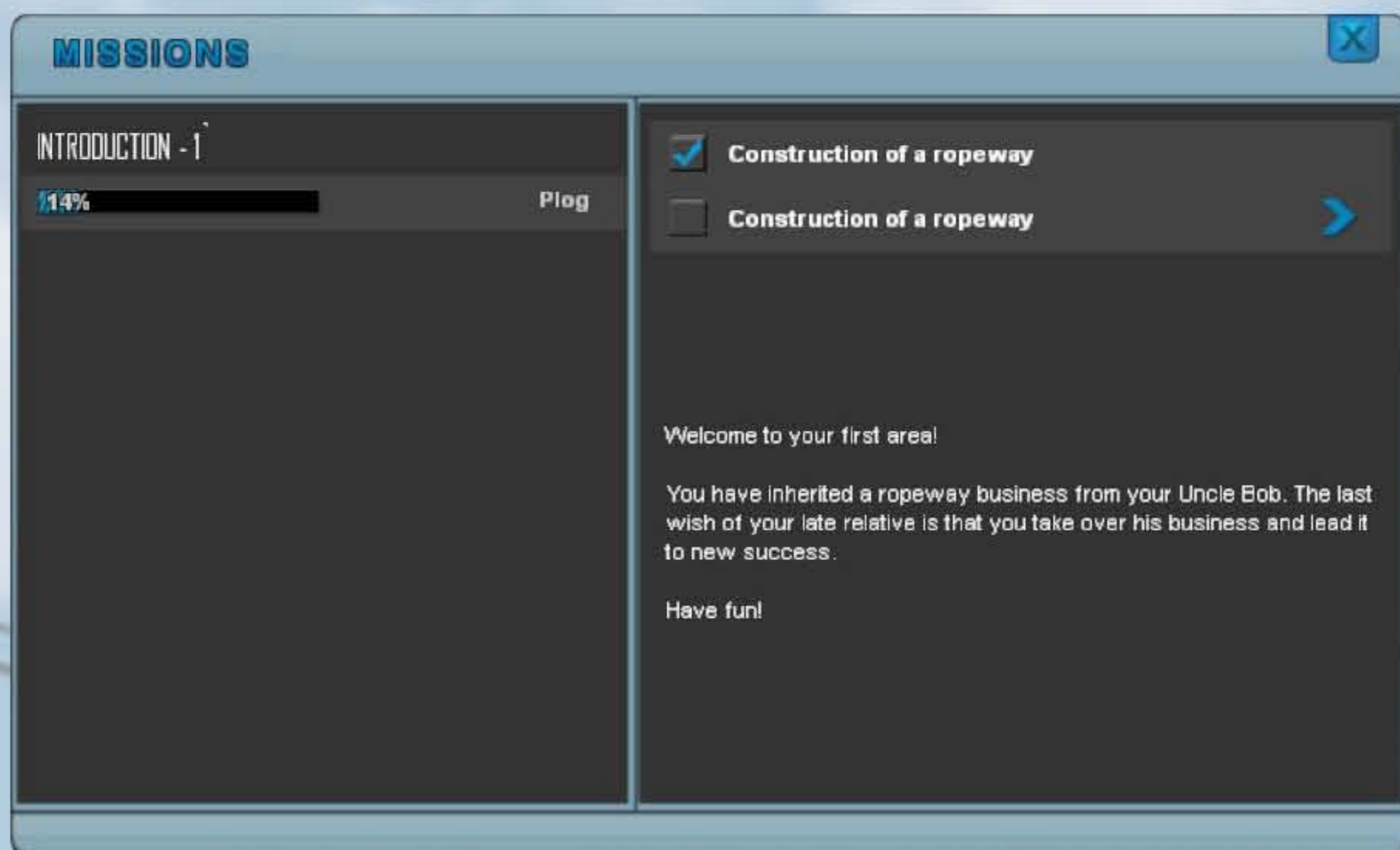
Hint: Click on the blue arrow beside the ropeway or point of interest and the camera will automatically move directly to it.

The screenshot shows a window titled "Navigation" with a close button in the top right. It has two tabs: "Station" and "Attractions". The "Attractions" tab is selected, showing a list of attractions:

Attraction	Condition	Action
Fixed grip chairlift (CLF)	<div style="width: 100%; height: 10px; background-color: #0070c0;"></div>	▶
	Condition	Plug

At the bottom right of the window is a button labeled "Refurbish all".

Missions



By clicking on the book symbol you can open the mission window. Here you can read what tasks you have to achieve in order to complete the main mission. Additionally, you will see the percentage of the current mission that you have already achieved. Hint: Click on the blue arrow beside a task, and the camera will automatically move directly to it.

Additional Hints and Tricks

Enhance: Enhance your attractions to attract more visitors and thus achieve higher profits.

Upgrade: Upgrade your ropeways in order to attract more visitors and charge higher prices at the same time.

Refurbish: Refurbish your ropeways regularly in order to avoid expensive repairs. Hint: You can repair all of your ropeways at the same time under navigation!

Ropeway operation: Decrease the motor output of ropeways that are little used in order to decrease wear and lower operating costs.

Construction costs: The more pylons you build, and the higher they are, the more expensive the total cost of the ropeway.

Visitor satisfaction: The bars showing visitor satisfaction can be found right beside your credit at the top right edge of the screen. The fuller the bars, the higher your income will be.

And finally we wish you lots of fun and the best of luck as you play Ropeway Simulator 2014!

Product Key

Support

If you have problems with Ropeway Simulator 2014, contact our support team:

Email: support@astragon.de

Website: www.astragon.de

Visit us on Facebook and YouTube:

www.facebook.com/astragonSoftware

www.youtube.com/user/astragonGames

Liability

This software has been very carefully crafted, tested, and reproduced. Please make sure that your computer fulfils the system requirements. The publisher does not provide any guarantee of the completeness or accuracy of the enclosed information, and accepts no liability for the consequences of faulty content.