



aerosoft™

OMSI 2 Add-on

Mallorca



Holidays en route!

Developed by: Kevin Nitschmann, Darius Bode
Manual: Michel Wagner, Aerosoft



OMSI 2 Mallorca

Manual

Copyright: © 2016 / **Aerosoft GmbH**

Airport Paderborn/Lippstadt
D-33142 Bueren, Germany

Tel: +49 (0) 29 55 / 76 03-10

Fax: +49 (0) 29 55 / 76 03-33

E-Mail: info@aerosoft.de

Internet: www.aerosoft.de
www.aerosoft.com



a e r o s o f t™

All trademarks and brand names are trademarks or registered of their respective owners. All rights reserved.

Add-on for

OMSI 2 - The Omnibus Simulator



Content

Introduction6

About this Manual.....	6
System requirements	7
Installation.....	8
Removal	8
Texture options.....	9

Preparing for Your First Trip10

City bus and articulated bus	11
Technical data	12
Driver's place	14
Ticket printer.....	19
Door controls	20
Level control.....	20
Lights, energy-save and schoolbus function.....	21
Heating, Ventilation and Air Conditioning	21
Fan Control Switch.....	22
Driver's Area Cooling.....	23
Re-circulated Air Setting	23
Passenger Area Temperature Regulator.....	23
Auxiliary Heat.....	23
Reheat	23
Adjusting the Temperature	24
Hints for modders	24
The Routes	25
Points of interest along the route	30

The city32

Welcome to Palma!	32
-------------------------	----

Credits33

Introduction

The omnibus simulator captures the famous holiday island!

With the OMSI 2 Add-on Mallorca the player can experience the popular beach region on the Canaries along the Platja de Palma cities Palma, Can Pastilla, El Molinar S'Arenal.

Three city bus lines, one express bus line and 33 special lines lead you through these nearly completely open cities, extensively staffed with more than 1,000 objects and buildings. The motorway MA-19 along the eastern part of the bay is also included.

About this Manual

This manual is limited to the description and explanation of this add-on. It is a supplement to the manual for the game "OMSI 2 - The Omnibus Simulator".

Please read the manual for the main OMSI game for descriptions and instructions about basic functions and configurations. If clarification for the add-on is required, explicit references to the OMSI manual are provided in this Gladbeck manual.



System requirements

In order for the Add-on „Mallorca“ to play as smoothly as possible, your system should have the following minimum requirements:

- OMSI 2 – The Omnibus simulator
- Operating system Win 7 / 8 / 8.1 / 10
- Processor (CPU) 3 GHz
- RAM: 4 GB or higher
- Free hard disk space min. 3 GB
- Graphics card at least 2 GB (DirectX: 9.0 or higher)
- Internet connection and user account required for Steam.

Please note: OMSI 2 - The Omnibus Simulator must be installed in advance for the add-on to operate.

Recommended equipment:

- Processor (CPU): 3.2 GHz Quad Core
- Force Feedback steering wheel (ideally with 90° angle)

To allocate more RAM to OMSI, you can use the 4GB patch. For more information, please refer to the forums at www.projekt-gladbeck.de



Installation



Sample screenshot. The installer of Mallorca structured identically.

You have to be logged in with administrator rights before you start the installation of "OMSI 2 Add-On Mallorca". To start the installation of "OMSI 2 Add-On Mallorca", simply insert the CD into your CD drive. After you have chosen your preferred installation language, the welcome screen appears and you will be presented with some important information, the license agreement, and instructions for installing/activating the product. Please read it carefully and follow the steps described to install the add-on. Please note that you need an internet connection for this. Steam and the base game OMSI 2 have to be installed already.

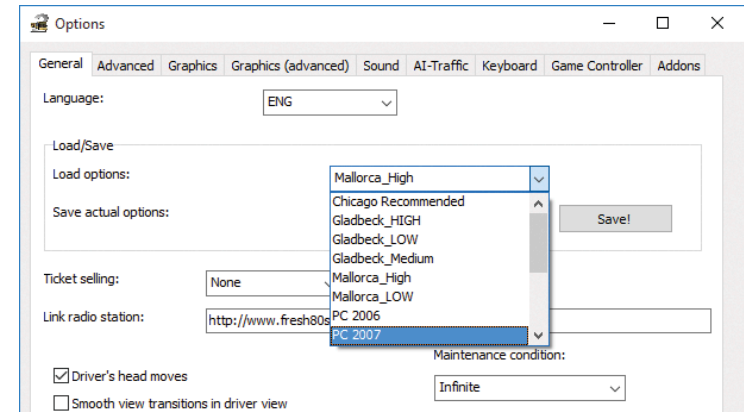
If you have purchased the download version, please open Steam in your library view. Click the button „Add a game...“ in the lower left corner and then click on „Activate a Product on Steam...“. A new window opens. Follow the steps and enter the product key you purchased when prompted.

Removal

In order to fully remove "OMSI 2 Add-On Mallorca" right click the "OMSI 2" entry in your Steam library, select "Properties" and open the "DLC" tab. Here, remove the checkmark next to the OMSI 2 Add-On Mallorca" entry.

Texture options

"OMSI 2 Add-on Mallorca" comes with two texture resolutions: High and Low. If you encounter performance problems you can lower the texture resolution. To do that, open the OMSI options in the tab "General" and select the entry "Mallorca_LOW" in the "Load options" menu. By selecting the entry "Mallorca_High", you can switch back to the higher quality textures as well. Apply with "OK".





Preparing for Your First Trip

In order to successfully master your first trip, you should familiarize yourself with the technical aspects of the OMIS system. We recommend you take the time to read the information in Chapter 2 of the OMIS Manual if you are not already familiar with the simulation.

Start the Add-on



Please select the appropriate version from the menu above:

- Palma

When you first start the game, select the option, "Load Map without Buses". Later you can select your desired date and time, press the "Start!" button and you are on your way!

City bus and articulated bus



EMT is operating bus traffic in Palma and the surrounding areas as a public company and serves 39 million passengers per year. The garage is located in Son Ferriol.

The company has 670 employees, 31 bus lines and 180 buses. There are also shuttle and special buses for events.

The 80 40-ft citybuses have 27 seats and 74 standings as a 3-door-version (25 seats with reduced seating for baggage storage). 2 wheelchairs are allowed in addition. These buses are driven by a 12 ltr Diesel, Euro 2, 290 HP and a 4-speed automatic transmission. The 14 60-ft articulated buses have 49 seats and 88 standings as a 3-door-version.

All three doors can be manually operated by the driver. A ceiling camera is displaying the rear door area at the driver's place. There is a LED stop display, stop request sign and LCD clock for passenger information.

By default, all buses are equipped with A/C automatic control, auxiliary heat and many fold-out windows. The driver's window and all roof hatches are operated electrically. The hatches can also be used as emergency exits.



Also, there are inside and outside emergency knobs at all doors.

For wheelchair access, the infamous wheelchair ramp, know from the old low-floor Hamburg citybuses is being used.

The touchscreen ticketprinter with open cash register has RBL and GPS support. There is a contact-less stamper mounted in the passenger room.

Technical data

Citybus 40 ft:

Year of make:	2001
Length:	11.95 m
Width:	2.5 m
Height:	3.01 m
Wheelbase:	5.84 m
Seats:	27
Standings:	74
Wheelchairs:	2
Empty weight:	11.5 t
Allowed total weight:	18 t
Engine:	12 ltr Diesel, 290 HP, exhaust turbo charger
Emission standard:	Euro 2
Transmission:	Voith DIWA 4-speed automatic
Max. speed:	80 kph (limited)

Articulated bus 60 ft:

Year of make:	2001
Length:	17.94 m
Width:	2.5 m
Height:	3.01 m
Wheelbase:	5.84 m
Seats:	49
Standings:	88
Wheelchairs:	2
Empty weight:	15.6 t
Allowed total weight:	28 t
Engine:	12 ltr Diesel, 290 HP, exhaust turbo charger
Emission standard:	Euro 2
Transmission:	Voith DIWA 4-speed automatic
Max. speed:	80 kph (limited)



Driver's place

Dashboard

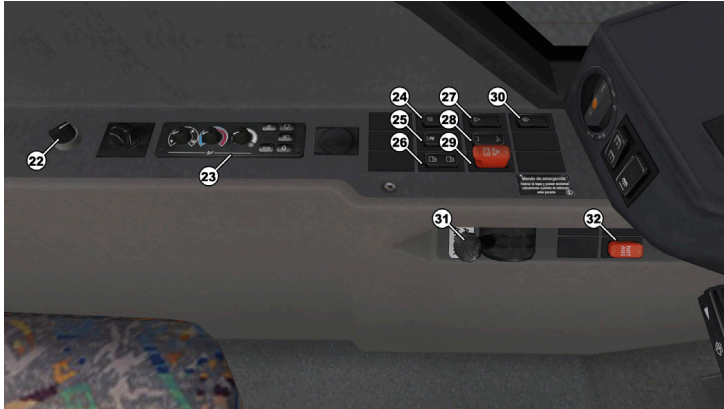


14	Switch wheelchair ramp 2nd door must be closed to start, engine running and stopbrake engaged
15	Gear selector
16	Switch schoolbus lights
17	Switch front door lock
18	Button front door Light indicates door open or failure
19	Button center door Light indicates door open or failure
20	Button rear door Light indicates door open or failure

01	Switch lighting (no function)
02	Switch level control to raise chassis level on all wheels
03	Switch hazard lights
04	Light switch Turn of standing/driving lights, pull out for fog lights
05	Switch passenger lights
06	Switch cashdesk light
07	Speedometer, Odometer
08	Control lights
09	Main information display
10	Steering column switch Indicators, full beams, wipers, washer, horn
11	Switch display page
12	Switch stop brake
13	Switch kneeling Raise only with doors closed

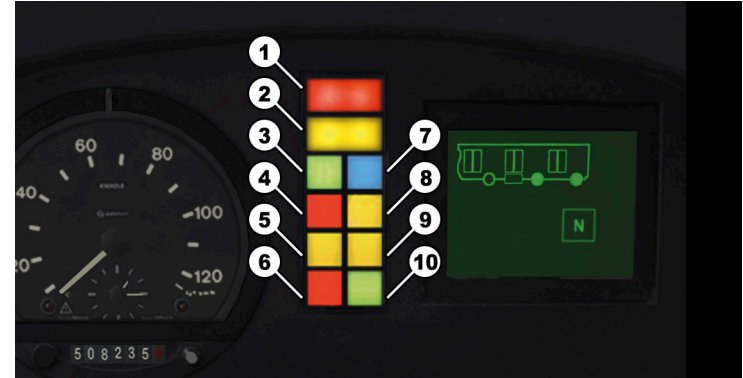


Window console



22	Killswitch wheelchair ramp
23	A/C interface
24	Switch side window heat
25	Switch fan control
26	Switch electric driver's window
27	Switch outside door opener lock
28	Switch roof hatches
29	Killswitch battery
30	Switch dashboard adjustment
31	Parking brake
32	Killswitch stop brake

Kontrollleuchten



01	Failure (not roadworthy)
02	Warning
03	Turn indicators
04	Brake system failure
05	Stop request
06	N/A
07	Full beam
08	ABS/ASR system
09	Stop request
10	N/A



Main information display

A new dashboard called “VDV standard” was introduced in 1996. The old banana-shaped dashboards were also standardized, but not very easy to use. The new dashboards were designed for more usability, convenience and flexibility.

The central display replaces many of the round instruments and control lights. It has 5 display pages: Pressure reservoir, coolant, drive / stop menu, warning, failure. The last two menus are only available when warnings or failures occur. After starting the electrics, pressure reservoir will be displayed for a few seconds. In case of low pressure or engaged foot brake, the display will not forward.

You can change the displayed menu page with the display browse switch.

If a warning occurs (yellow light), you can check the warning by pressing the switch. A failure (red light) is always displayed constantly. In case of multiple warnings, you can use the switch to browse through all pages.

The display will switch between stop menu and drive menu automatically. The stop display shows door status (blinking means released, black is open), kneeling and brakes. “P” stands for active parking brake, “N” for automatic transmission in neutral. You will also see a symbol when ramp or stroller request are pressed.

When all brakes are released and doors are closed, the display will switch to drive menu with reduced information. Usually you see stop request, A/C and brake information in drive screen only.

Warnings and failures will appear here as well. Warnings are displayed with the yellow light and a short buzz sound. Usually the bus is still safe to operate then, or the warning can be deleted by resetting (turning off) the electronics. If multiple warnings occur, they will automatically forward the display pages when driving, or you can use the display browse switch to look through them.

Serious failures mean the vehicle is no longer safe to operate. These failures are displayed by the red light and a constant buzz sound. Other display pages are no longer available.

Ticket printer



After the ticket printer powers up, press ‘Start’ and type in your vendor number and PIN. If you are not logged-in, this is displayed on a list below the device. Next you can enter a course number for the announcement and stops display. The course numbers can be found in the schedule information for each map. If no OMSI schedule is activated, no delays will be displayed and you must manually change the stops by pressing Q or using the yellow arrow keys.





You can switch between Spanish and German as display languages with the yellow flag icon button.

Without a course number, you can still sell tickets, but without stop information. The printer can identify up to 8 tickets for every OMSI map.

Ticket sales are totaled and can be seen in the Function Menu (F). Use "Storno" if you need to subtract an accidentally printed ticket from the total sales. In the Function Menu, you can also end your shift, change the course number or lock the system ("Pause").

Refer to the main OMSI menu to manually select a destination using the 'Destination Code'.

While driving, the printer display changes from the sales screen to show current and next stop. If you are driving a particular course number and begin a new trip, you must confirm that the initial location has been reached by pressing the green button, 'Starting point reached'.

Door controls

All buses are equipped with pneumatic double pan-inside doors. They can be directly controlled by three door push buttons by the driver.

Each door has a knob to lock the door from the inside and an emergency handle to unlock the door from in- and outside. The outside door opener can be disengaged with a safety switch for 15 minutes.

There are entry spot lights above each door. The outside door opener for the driver is located at the right front side underneath the windshield.

Level control

The airride level control levels all suspensions to maintain a balanced height independently from loaded weight. This can also be used to kneel down the bus on the right side for easy entry. The bus will automatically lift up when the doors are closed again.

Airride needs sufficient pressured air reservoir to work.

Lights, energy-save and schoolbus function

Both buses use classic halogen and bulb exterior lights. The flipdot target displays are equipped with neon tube back-lights.

The main lighting switches are located on the left front of the dashboard. The rotating switch controls the outside lighting: standing lights, drive lights and fog lights (pull out). The instruments light is activated together with the outside lights. Fullbeams can be controlled with the steering column lever as usual.

The driving lights will be reduced to standing lights by power-save function when the engine is turned off. Use the switch again or turn the engine back on to restore full power.

There are two switches beneath the rotating switch for interior lights. The cashdesk light will also turn on when outside lights are on and one door is being opened. The passenger room lights can be set to level 1 or 2 and will also be reduced by power-save function when engine is turned off.

The toggle switch with "mother and child" will turn on school bus light mode. When doors are open and indicator set right, the hazard flasher will become active. When you leave the station with the left indicator, hazard lights will turn off. This makes it a lot easier to drive school bus services where hazard flashers have to be used at each stop.

Heating, Ventilation and Air Conditioning

Air conditioners are installed on the roof. There is also an auxiliary oil heater for cold starts. The bus has sliding windows. However, these should only be used when the air conditioning is not running.

The air conditioner is operated by the control panel on the window console left of the driver's seat.

As can be seen on the small icon below rotary knobs, the knob settings only serve the driver's area. In order to regulate the temperature in the passenger compartment, press the second button on the right.



Now we will take a closer look at the control panel. The rotary knobs adjust the driver's seat ventilation. Turn the dial to select foot well, dashboard and foot well vents, dashboard vents only, and windshield defroster. The vent flaps remain open at each setting. Use the second dial to set the temperature. The heat is generated by heated water from the engine and is controlled by the thermostat. The third dial controls the blower strength. When the engine is turned off, there is only a small amount of power available.

Fan Control Switch

You can adjust the passenger compartment climate control using the switch on the left window console.

Press the switch up to turn the fan on. When the engine is off, only a small amount of power is available. The fan will switch on automatically if the passenger air and the recirculation fan controls are off and the temperature exceeds the set point. The fan is always switched off when the recirculation fan is activated or the internal temperature is too low. Press the switch down to return the control from manual to automatic.

The buttons on the right keypad regulate the climate control. The indicator lights show which function is activated.

	Drivers Area Cooling combines the driver's seat ventilation with air conditioning
	Passenger Area Temperature Regulator activates A/C in the passenger compartment
	Auxiliary Heat
	Re-circulated Air Fresh air ventilators close for 10 minutes
	Reheat Quickly thaws window frost

Driver's Area Cooling

This is used to quickly cool the driver's area during high temperatures. It is activated only when the temperature selector is in the blue zone and the outside temperature is over 12°C.

Re-circulated Air Setting

Use this setting to temporarily close the fresh air dampers in poor air conditions or to raise the heat more quickly. This will, however, reduce the cooling capacity. The flaps open again automatically after about 10 minutes and the indicator light will go out.

Passenger Area Temperature Regulator

This automatically adjusts the fan speed to bring the passenger compartment temperature to the programmed setting. To change the temperature setting, refer to the 'Adjusting the Temperature' section below. The passenger compartment temperature control runs on a low fan speed when the motor is off to save energy. The air conditioning is turned off when the outside temperature is too low.

Auxiliary Heat

The auxiliary oil heater is active only after the bus is warmed up. It is indicated on the central information display and by the control light on the keypad. It can be used to quickly warm-up the engine and provide more available heating power. The climate control cannot automatically start the auxiliary heater. If the engine temperature is too high, the auxiliary heater will pause.

Reheat

This function blows dehumidified air from the air ducts on to the windows to ensure faster defrosting.



Adjusting the Temperature

The factory temperature is set at 22°C. To change the programming for your bus, hold the passenger compartment temperature control switch for several seconds until the indicator light starts flashing.

Now you can change the temperature in increments of 2°C within the range of 18-26°C using the re-circulated air button to reduce the temperature the auxiliary heat button to raise the temperature.

Hints for modders

Every vehicle has repaint templates in the Texture folder to create own paintworks. The interior is pictured on two textures in every bus: the normal interior textures for player vehicles and the small version for AI on the main texture.

To paint over transparent windows, use a .dds or .tga texture with alpha channel.

The Routes

Line 1: Aeroport ► Port (IBIS: 001 00 00 001)	Line 1: Port ► Aeroport (IBIS: 001 00 00 002)
▼ Aeroport - Arribades	▼ Escola de Nàutica
▼ Aeroport (Benzinera)	▼ Museu de Sant Carles
▼ Joan Maragall, 25	▼ Dic de l'Oest, 1
▼ Gabriel Alomar, 39	▼ Portopí (centre comercial)
▼ Gabriel Alomar, 29	▼ Port de Palma (Estació Marítima)
▼ Gabriel Alomar, 1	▼ Club de Mar
▼ Grans magatzems	▼ Can Barberà
▼ Plaça d'Espanya	▼ Passeig Marítim, 33
▼ Comte de Sallent	▼ Auditòrium
▼ Alemanya, 6	▼ Passeig Marítim, 7
▼ Passeig Mallorca, 38	▼ La Feixina
▼ Passeig Mallorca, 18	▼ Passeig Mallorca, 7
▼ Argentina, 25	▼ Instituts
▼ Es Jonquet	▼ Av. d'Alemanya, 3
▼ Passeig Marítim, 2	▼ Plaça d'Espanya
▼ Auditòrium	▼ Alexandre Rosselló, 5
▼ Passeig Marítim, 33	▼ Escola Graduada
▼ Can Barberà	▼ Porta del Camp
▼ Club de Mar	▼ Joan Maragall, 18
▼ Port de Palma (Estació Marítima)	▼ Aeroport - Sortides
▼ Dic de l'Oest, 2	▼ Aeroport - Arribades
▼ Museu de Sant Carles	
▼ Escola de Nàutica	



Line 15: Plaça de la Reina ▶ Platja de Palma (IBIS: 015 00 00 001)	Line 15: Platja de Palma ▶ Plaça de la Reina (IBIS: 015 00 00 002)
▼ Plaça de la Reina	▼ Balneari, 1
▼ Joan Carles I	▼ Balneari, 2
▼ Plaça del Mercat (Audiència)	▼ Balneari, 3
▼ La Rambla	▼ Balneari, 4
▼ Baró de Pinopar, 14	▼ Llaüt (Golf Fantasia)
▼ Av. Alemanya, 7	▼ Llaüt (Hotel Neptuno)
▼ Plaça d'Espanya	▼ Llaüt (Hotel San Francisco)
▼ Alexandre Rosselló, 5	▼ Llaüt, 21 (Riu Palace)
▼ Escola Graduada	▼ Mar Tirrena (Hotel Garonda)
▼ Porta del Camp	▼ Marbella (Hotel Acapulco)
▼ Joan Maragall, 18	▼ Marbella, 61
▼ Joan Maragall, 36	▼ Marbella, 51 (Hotel Cupido)
▼ Es Portitxol	▼ Marbella (Hotel Caballero)
▼ Lluçmajor, 56	▼ Marbella (Apartaments Les Veles)
▼ Lluçmajor, 100	▼ Ses Fontanelles (Aquàrium Palma)
▼ Lluçmajor, 144	▼ Manuela de los Herreros (Hotel Java)
▼ La Gruta	▼ Manuela de los Herreros (Hotel el Cid)
▼ Cardenal Rossell, 1	▼ Tramuntana, 9
▼ Cardenal Rossell, 36	▼ Octavi August, 60 (Hotel Linda)
▼ Cardenal Rossell, 90 (Coll d'en Rabassa)	▼ Camí de Can Pastilla, 55
▼ Camí de Can Pastilla, 46 (Edifici Endesa)	▼ Camí de Can Pastilla
▼ Cala Estància	▼ Camí de Can Pastilla, 37 (Edifici Endesa)

Line 15: Plaça de la Reina ▶ Platja de Palma (IBIS: 015 00 00 001)	Line 15: Platja de Palma ▶ Plaça de la Reina (IBIS: 015 00 00 002)
▼ Camí de Can Pastilla, 82	▼ Cardenal Rossell, 65 (Coll d'en Rabassa)
▼ Camí de Can Pastilla, 110 (Hotel Linda)	▼ Cardenal Rossell, 23
▼ Bartomeu Riutort, 16 (Can Pastilla)	▼ Cardenal Rossell, 1
▼ Xabec, 2 (Hotel Miraflores)	▼ La Gruta
▼ Manuela de los Herreros (Hotel el Cid)	▼ Lluçmajor, 105
▼ Manuela de los Herreros (Hotel Java)	▼ Lluçmajor, 77
▼ Ses Fontanelles (Aquàrium Palma)	▼ Lluçmajor, 36
▼ Marbella, 10 (Apartaments Les Veles)	▼ Es Portitxol
▼ Marbella, 22 (Apartaments Piliàri)	▼ Joan Maragall, 33
▼ Marbella, 32 (Hotel Cupido)	▼ Joan Maragall, 25
▼ Marbella, 36	▼ Gabriel Alomar, 39
▼ Marbella, 42 (Hotel Acapulco)	▼ Gabriel Alomar, 29
▼ Mar Tirrena (Hotel Garonda)	▼ Gabriel Alomar, 1
▼ Llaüt (Riu Palace)	▼ Grans magatzems
▼ Llaüt, 26 (Hotel Playa Golf)	▼ Plaça d'Espanya
▼ Llaüt, 38 (Mega Park)	▼ Comte de Sallent
▼ Trasimè, 2 (Hotel Hispania)	▼ Via Roma (Clínica Rotger)
▼ Trasimè, 24 (Hotel Playa Arenal)	▼ Plaça del Mercat (Audiència)
▼ Balneari, 1	▼ Pl. de la Reina
	▼ Plaça de la Reina



Line 21: Aeroport ► S'Arenal (IBIS: 021 00 00 001)	Line 21: S'Arenal ► Aeroport (IBIS: 021 00 00 002)
▼ Aeroport - Arribades	▼ Cartago (Platja)
▼ Aeroport (Benzinera)	▼ Plaça dels Nins
▼ Camí de Can Pastilla, 110 (Hotel Linda)	▼ Cra. Militar, 231
▼ Bartomeu Riutort, 16 (Can Pastilla)	▼ Avinguda d'Amèrica (Hotel Géminis)
▼ Xabec, 2 (Hotel Miraflores)	▼ Avinguda d'Amèrica (Hotel Taurus Park)
▼ Manuela de los Herreros (Hotel el Cid)	▼ Llaüt (Golf Fantasia)
▼ Manuela de los Herreros (Hotel Java)	▼ Llaüt (Hotel Neptuno)
▼ Ses Fontanelles (Aquàrium Palma)	▼ Llaüt (Hotel San Francisco)
▼ Marbella, 10 (Apartaments Les Veles)	▼ Llaüt, 21 (Riu Palace)
▼ Marbella, 22 (Apartaments Pil·lari)	▼ Mar Tirrena (Hotel Garonda)
▼ Marbella, 32 (Hotel Cupido)	▼ Marbella (Hotel Acapulco)
▼ Marbella, 36	▼ Marbella, 61
▼ Marbella, 42 (Hotel Acapulco)	▼ Marbella, 51 (Hotel Cupido)
▼ Mar Tirrena (Hotel Garonda)	▼ Marbella (Hotel Caballero)
▼ Llaüt (Riu Palace)	▼ Marbella (Apartaments Les Veles)
▼ Llaüt, 26 (Hotel Playa Golf)	▼ Ses Fontanelles (Aquàrium Palma)
▼ Llaüt, 38 (Mega Park)	▼ Manuela de los Herreros (Hotel Java)
▼ Trasmè, 2 (Hotel Hispania)	▼ Manuela de los Herreros (Hotel el Cid)
▼ Trasmè, 24 (Hotel Playa Arenal)	▼ Tramuntana, 9
▼ Cartago (Platja)	▼ Octavi August, 60 (Hotel Linda)
	▼ Camí de Can Pastilla, 55
	▼ Aeroport - Sortides
	▼ Aeroport - Arribades

Line 25: Plaça de la Reina ► S'Arenal (IBIS: 025 00 00 001)	Line 25: S'Arenal ► Plaça de la Reina (IBIS: 025 00 00 002)
▼ Plaça de la Reina (Catedral)	▼ Amilcar, 1 (S'Arenal)
▼ Joan Carles I	▼ Balneari, 2
▼ Plaça del Mercat (Audiència)	▼ Balneari, 3
▼ La Rambla	▼ Balneari, 4
▼ Baró de Pinopar, 14	▼ Llaüt (Golf Fantasia)
▼ Av. Alemany, 7	▼ Llaüt (Hotel Neptuno)
▼ Plaça d'Espanya	▼ Llaüt (Hotel San Francisco)
▼ Alexandre Rosselló, 5	▼ Llaüt, 21 (Riu Palace)
▼ Escola Graduada	▼ Mar Tirrena (Hotel Garonda)
▼ Porta del Camp	▼ Marbella (Hotel Acapulco)
▼ Manuela de los Herreros (Hotel el Cid)	▼ Marbella, 61
▼ Manuela de los Herreros (Hotel Java)	▼ Marbella, 51 (Hotel Cupido)
▼ Ses Fontanelles (Aquàrium Palma)	▼ Marbella (Hotel Caballero)
▼ Marbella, 10 (Apartaments Les Veles)	▼ Marbella (Apartaments Les Veles)
▼ Marbella, 22 (Apartaments Pil·lari)	▼ Ses Fontanelles (Aquàrium Palma)
▼ Marbella, 32 (Hotel Cupido)	▼ Manuela de los Herreros (Hotel Java)
▼ Marbella, 36	▼ Manuela de los Herreros (Hotel el Cid)
▼ Marbella, 42 (Hotel Acapulco)	▼ Plaça de la Reina (Catedral)
▼ Mar Tirrena (Hotel Garonda)	
▼ Llaüt (Riu Palace)	
▼ Llaüt, 26 (Hotel Playa Golf)	
▼ Llaüt, 38 (Mega Park)	
▼ Trasmè, 2 (Hotel Hispania)	
▼ Trasmè, 24 (Hotel Playa Arenal)	
▼ Amilcar, 1 (S'Arenal)	



Points of interest along the route

- Cathedral of Palma
 - | - built from 1230 until early 20th century
 - | - 110m long / 33m wide / 44m tall
 - | - Lines 1, 15, 25
 - |
- Plaza de España (Palma de Mallorca)
 - | - old names: Porta Pintada, Juanot Colom, Eusebio Estada
 - | - squares of the same name can be found in many other Spanish cities
 - | - Lines 1, 15, 25
 - |
- El Corte Inglés
 - | - most lucrative store chain in Europe (#4 world wide)
 - | - Sales concept ist similar to the KaDeWe in Berlin
 - | - offers wellness, sports, leisure, gastronomy & seminar areas
 - | - Lines 1, 15, 25
 - |
- Palma Aquarium
 - | - Combination of aquarium and amusement park
 - | - harbours 55 aquariums with more than 700 marien species
 - | - has the second largest roof garden in Europe
 - | - Lines 15, 21, 25
 - |
- Airport Palma de Mallorca
 - | - opened in June 1960 as replacement of the Airport Son Bonet (today an airfield)

- | - third largest airport in Spain
- | - capacities for 38 million passengers per year (passengers in 2015: 23,7 Mio.)
- | - Lines 1, 21
- |
- Ballermann 6
 - | - famous beach pub at the Platja de Palma
 - | - the name is a Germanized wordplay on „Balneario N° 6“
 - | - over a length of 4km there are structurally identical beach pubs every 270m
 - | - Lines 15, 21, 25
 - |
- Mega Park
 - | - compound of beer garden and large open air discotheque
 - | - in summer 2015 an underground party room opened, called the “MegArena”
 - | - in summer 2014 a VIP Lounge in the upper floor was added, the „FirstFloor“
 - | - Lines 15, 21, 25
 - |
- Depot of the EMT
 - | - harbour the bus fleets of 179 vehicles (state 2014)
 - | - more than 30 urban and rural destinations are serviced from here
 - | - in 2015, more than 39 million passengers were transported
 - |
- Palma – holidays all along the line



The city

Welcome to Palma!

In the southern part of the Balearic island of Mallorca lies that city which is mostly known for its party locations - although Palma has a lot to offer beyond this cliché.

Considering the average annual temperature of 18°C, one just has to visit the beach. With its total length of 6km, the "Platja de Palma" (or "Playa de Palma") stretches from the region "Can Pastilla" in the west all the way to "S'Arenal" in the east. 15 irregularly spaced, numbered beach pubs, the so called "Balnearios", break up the beach. The most well known of them is the infamous "Balneario N° 6".

A visit to the inner city of Palma is worthwhile as well, though. Palma's centre houses the historic old town. It is bordered by a large ring road today instead of the town wall which was demolished in the early 20th century. Especially noteworthy is the cathedral "La Seu" (en.: The Bishop's See). When you've had enough of the colourful bunch of different architectural styles of the cathedral and the narrow, car-free backstreets of the old town, try out a ride to the southwest. The fortress "Castell de Bellver" (en.: Castle of Belver) is located here, offering you an unparalleled vista of Palma.

If you're rather into sports than culture, Palma has something for you as well. Besides to great marathons in March (Ciutat marathon) and October (Palma de Mallorca marathon), trotting races take place weekly on the trotting track. Ball sports aficionados should pay a visit to the games of the clubs "Portol Drac Palma Mallorca" (volleyball), "Palma Air Europe" (basketball), and "Futsal Palm" (indoor soccer). Actual soccer has a presence here as well: the club "RCD Mallorca" plays in the "Iberostar Estadi" stadium.

Lesser known to many tourists is the infrastructure of Palma. It's hard to believe, but true: the capital is pervaded by a huge net of broad roads and motorways, one of them serving as the ringroad urban motorway. Being THE traffic hub of the Balearic islands, this widely ramified road network connects all places of Mallorca. And the extensive net of 29 bus lines is accompanied by a underground line.

Credits

This add-on with its final extent and quality wouldn't have been possible without the profound help of the following people, who deserve my greatest gratitude:

Andreas Müller	Magdalene Podstawny	Morell Bosch Mercedes
Dat Pati	Maik Kasalik	MVAG
Fabian Boulegue	Maik Müller	Neslihan Acar
Fabienne Stipek	Mathias Giesen	Nick Zimmermann
Julia Russat	Maurice Kelch	Niklas Bürmann
Kevin Korbmacher	Melissa Kostka	Oliver Schwalke
Kevin Schmid	Michel Wagner	Pascal Stern
Konstantin	Miekele	Phillip Urban
Yufa Modifications		

We also thank the companies EMT Palma, AIDA Cruises, ZOOM Erlebniswelt Gelsenkirchen and the Mallorca Magazin as well as the city of Palma for their friendly support.

Additionally, we have to thank all the photographers who supplied us with a myriad of picutes and textures and allowed the use of those in this add-on.

Manual: Michel Wagner [R&W | SimuRush]



aeroSOFT™

OMSI 2 Add-on



Citybus Series



The MAN „Lion’s City“ characterises Germany’s cityscape and bus history like no other buses.

Experience them now at your PC – with 4 buses, up to 45 individual customisation options and complete repaintability!



aerosoft™

OMSI 2 Add-on

Aachen

LINE 33 + 73



Discover the old imperial city by bus!

Passing numerous famous sights, you drive through Aachen and into the Dutch city of Vaals in one of three faithfully modelled buses.



aerosoft™

OMSI 2 Add-on

London



Get behind the steering wheel of one of the iconic „Son of Routemaster“ and master the left-hand traffic in the British metropolis.

OMSI 2 Add-on London – available shortly!