

DARK EDEN

~Cataclysm~

Game Manual



A. Introduction

(About Game)

'Dark Eden', the real R.P.G game, will provide you a new experience you did not have from the other games before. Welcome to the world of 'Dark Eden' themed in Vampire which is differentiated from the typical fantasy world.

'Dark Eden' is an online game featured with vampire, which sucks blood, in the near future.

'Dark Eden' is the story about the war between three races including Vampire, Slayer and Ousters for possessing the 'Bible of Blood' to survive in Eslania which is a virtual country in the Europe.

Come enjoy the large-scale war and guild war between Vampires, who are dreaming of eternal proliferation of their race through the 'Bible of Blood', Slayers who are seeking for the 'Bible of Blood' to prevent ruin of human being and Ousters who are trying to return to be human again. You are the one who will win in the chaotic world of 'Dark Eden' within the fierce battle between the three races.

(Features)

1. Unique Theme and Genre

The game constitutes of a unique object which is vampire in the near future and this differentiates Dark Eden from the other MMORPGs. The game has modern horror fantasy background through combination of heroism, middle-age fantasy and SF future atmosphere.

2. Battle between races based on and well-made scenario

You can choose race freely from Vampire, Slayer and Ousters who fight with each other. Small-size conflicts between races occur for delicate turf war. Further, large-scale war between races which seems to be strategic enough and siege warfare between guilds occurs in Adam's shrine.

3. Differentiated characteristics of races

Vampire and Ousters use level system while Slayer uses skill system. Each race has unique growth system, item configuration, skill and class. Vehicles including motorcycle, helicopter, bat and warp tunnel, shylph jam, horn of spirit of land enable characters to move on map quickly and spells are provided that each race has its own merit and drawback.

4. Change in stats according to time

Changes in day and night are not limited to vision and background scene but affect stats of each race according to the time. Vampires become stronger in the night while Slayers and Ousters become stronger during day.

5. Race System

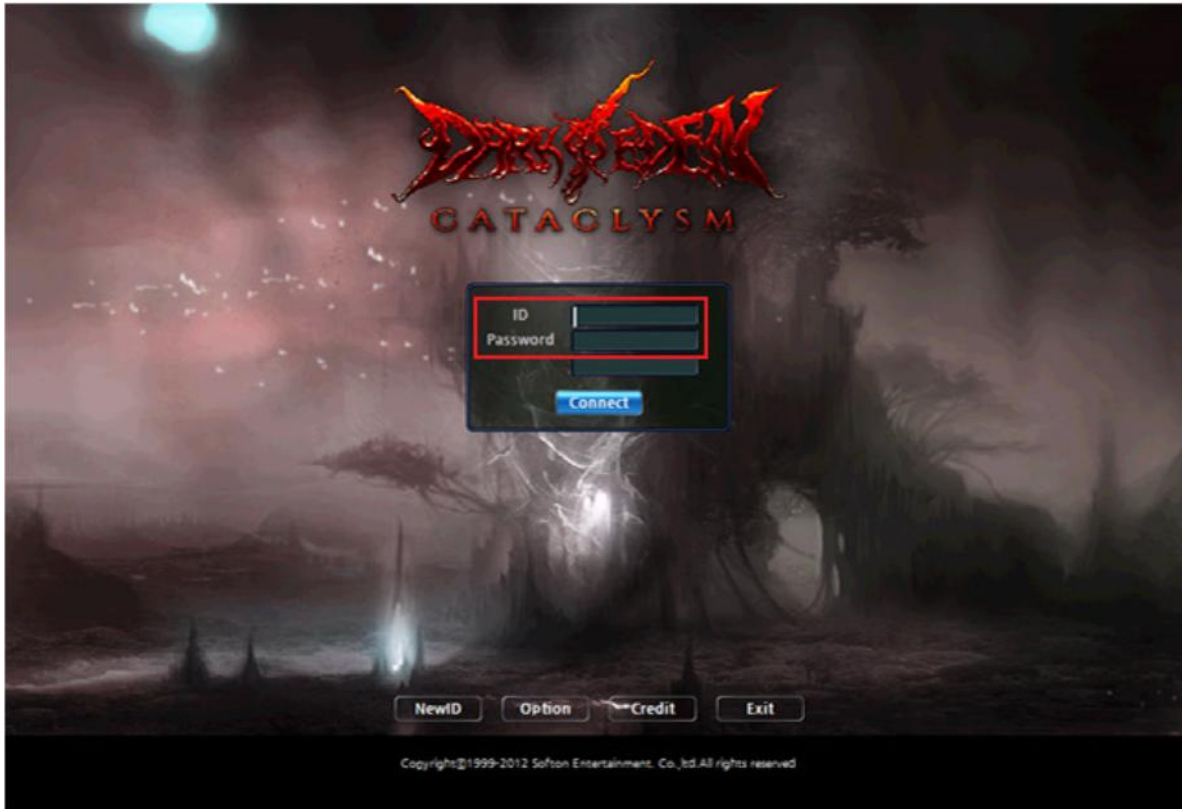
Class system where the characters grow irrespective of level has been adopted and support class skill which the characters can learn skills selectively.

6. Various Skills

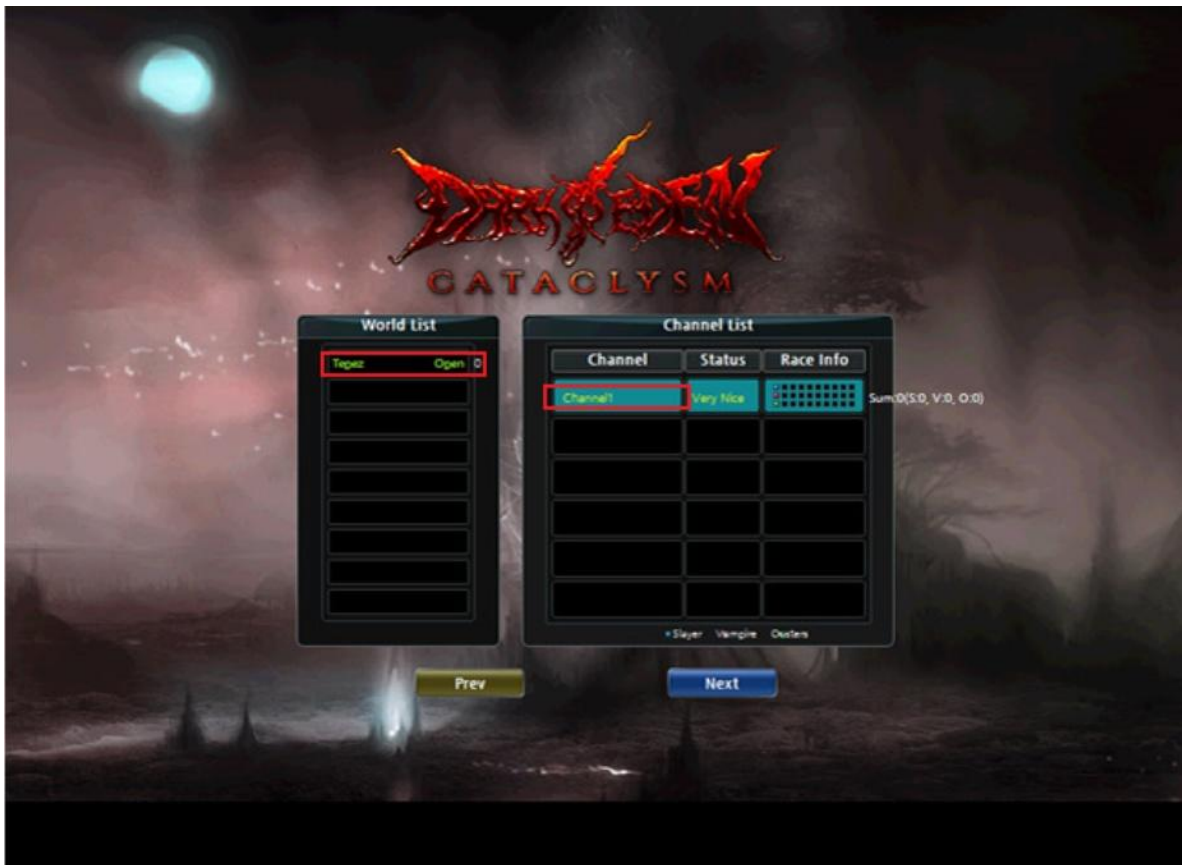
Vampire and Ousters have about 40 and 70 skills and spells respectively. Slayers have about 100 types of skills and spell. Further, there are 30 types of passive skills according to the class

B. Create/Delete Character

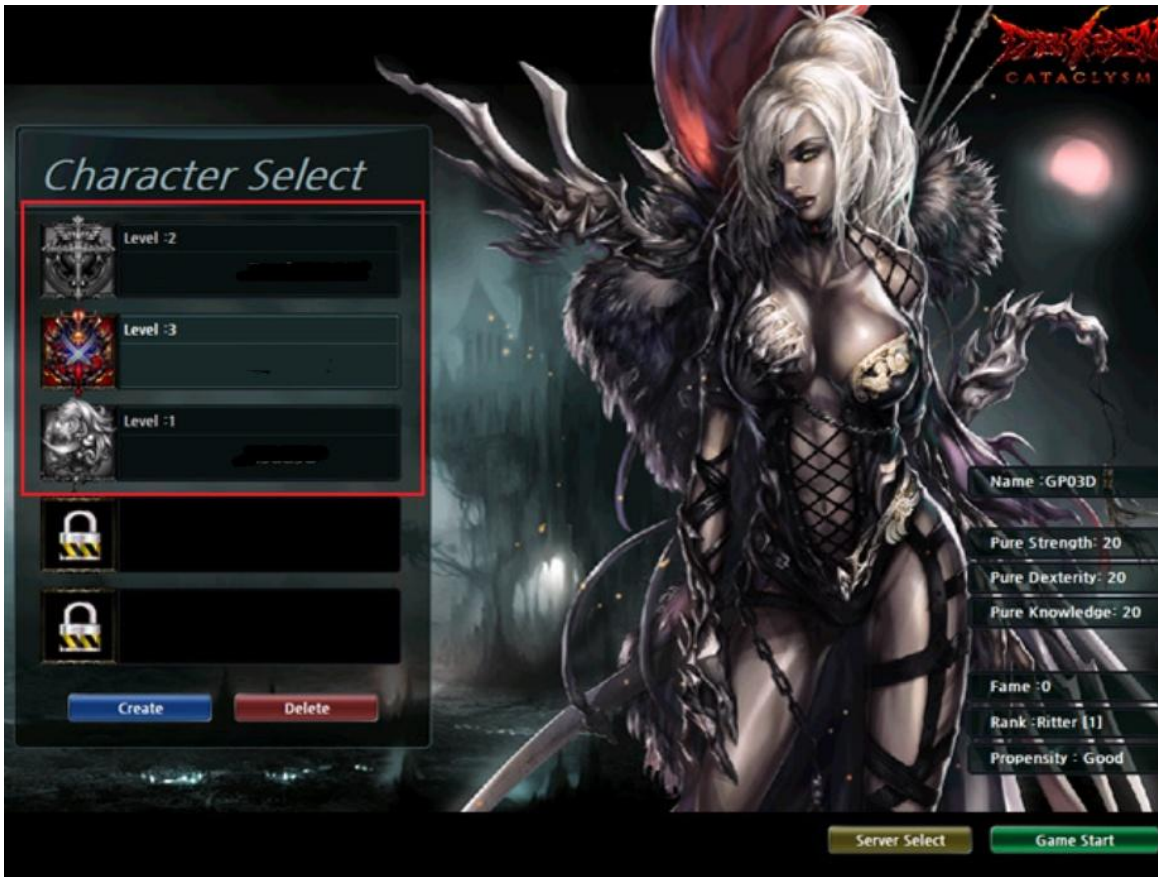
(Create Character)



1. Enter [ID and PASSWORD] of the account registered and click [Login] button.



2. Choose world and channel for playing game



4. Choose and double click place for creating character or click [Create Character] button.

* You can create 3 characters at maximum in an world.

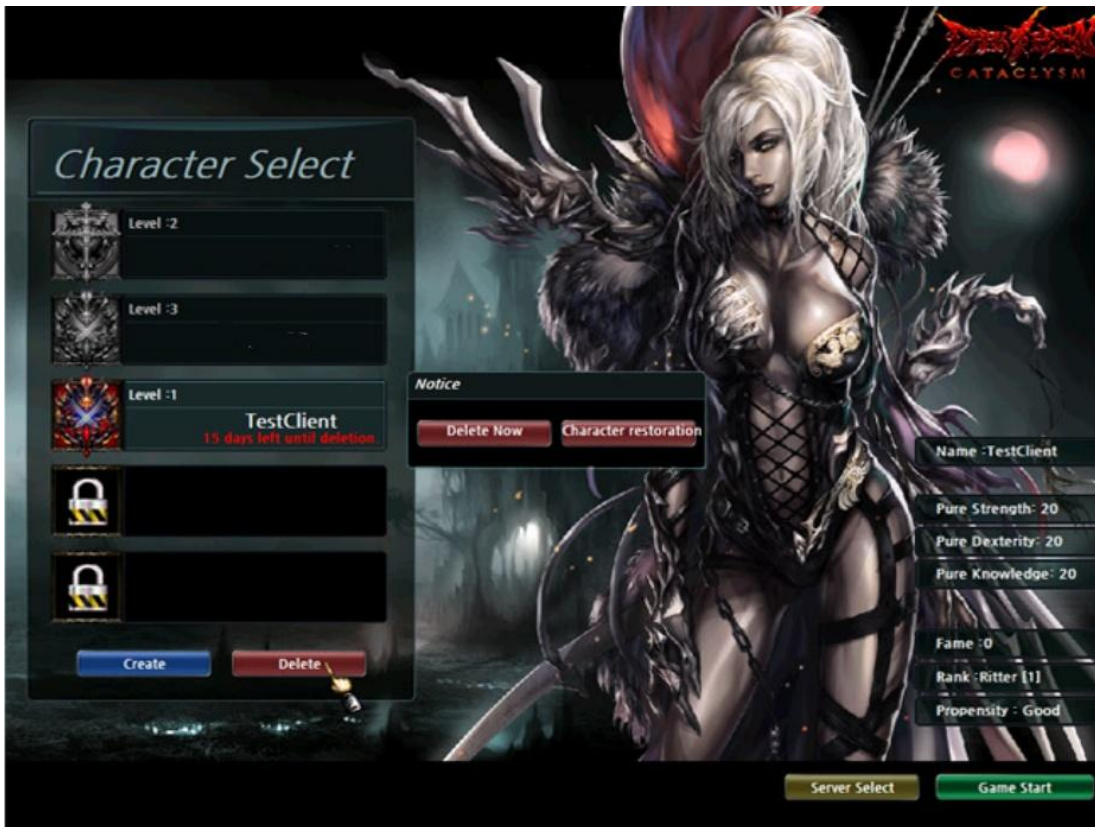


5. Set race, name and gender of character then click [Create Character] button.

* Character's name should be within 5 and 10 words for Korean and English respectively.

* Ousters do not have gender.

(Delete character)



1. Choose character to be deleted and click [delete character] button.

2. Enter registration number of the account and click confirm button to delete the character.

* The deleted character can be recovered within 10 days from the deletion. Items and game money cannot be recovered therefore carefully delete the character.

C. Game Control

(How to control)

Use mouse and keyboard shortcuts for easier game play!

(Mouse control)



You can get item, move character and follow subject by using mouse.

(Keyboard control)



You can play the game faster by using various shortcuts for control therefore play the game more conveniently.

* You can change and use keyboard shortcuts to be your taste.

1. You can check shortcuts through game menu (ESC) -> change option -> game setting -> keyboard setting.
2. You can modify and change shortcuts to be your taste in keyboard setting.

- Keyboard shortcuts

* When chatting screen is closed, you can use it as shortcut apart from [Ctrl] key.

- Keyboard shortcuts

Shortcut	Usage
ALT + TAB	Logout window
Esc	Game menu
Ctrl + H	Help guide
Ctrl + Tab	Equipment screen
Tab	Bag (inventory)
Ctrl + M	Mini map
Ctrl + I	Character information
Right Ctrl + Subject for checking information	See character information
Ctrl + K	Skill information
Ctrl + S	Open skin icon screen
Ctrl + C	General chatting
Ctrl + Z	Zone chatting
Ctrl + A	Party chatting

Ctrl + G	Guild chatting
Ctrl + T	Channel chatting
Ctrl + W	Whisper
Ctrl + E	Chatting screen
Alt + Click subject for trade	Trade
Right Alt + Click subject for making party	Make party
Ctrl + P	Party screen
Shift + Click subject for attack	Forced attack
Left, right Alt	Check dropped item
Ctrl + ~	On/ off quick item
Ctrl + click subject for following	Follow the character selected
Ctrl + V	Change shadow display option
Scroll Lock, Print Screen	Screenshot

- Chatting shortcut command

Enter each command on chatting screen

I.e.>enter [/C] then enter your saying for general chatting.

Shortcut	Usage
/C	General chatting command
/Z	Zone chatting command
/P	Party chatting command
/G	Guild chatting command
/W	Whisper command
/U	Alliance chatting command
/BGM	BGM on / off
/Sound effect	Sound effect on / off
/Chatting guide, /?	See chatting guide
/Help, /help, /H, /help	See basic help guide
/Where, * where	Check server where certain user is logging in

- Shortcuts of each race

Click skill icon and put mouse point on the skill for appointing the number of skills.

Race	Shortcut	Usage
Slayer	F1 ~ F8	Belt shortcut You can use the shortcut by using belt item.
	F9 ~ F12	Skill shortcut You can appoint and use skills by using shortcut.
Vampire	F1	Shortcut for using serum(recovery) item Items such as serum in inventory are automatically registered and you can use the item.
	F5 ~ F12	Skill shortcut Appoint and use skills by using shortcut.
Ousters	F1 ~ F6	Shortcut for arms band You can use it by using arms band item.
	F7 ~ F12	Skill shortcut Appoint and user skills by using shortcut.

◆ Basic interface



Learn the whole structure of interface of Dark Eden.

* All interfaces apart from mini map and skill screen can be moved.

No.	Usage	Contents	
1	Buff screen	Status-related spells applied to the character including buff and debuff are displayed.	
2	Chatting screen (Open: Enter)	Chatting mode setting or the contents of chatting you or the other user entered. ※ You can check the previous contents by using mouse wheel or scroll bar on the right side of chatting screen.	
3	Belt , arms band slot screens	This screen is displayed when slayer and ousters wear belt and arms band items. ※ Not for vampire.	
4	Information screen	Current data in the game, major stats of character are displayed.	
5	Insane gauge	A(Attack insane mode): this mode is charged by attacking, special abilities including sucking blood and sucking soul. D(Defense insane mode): this mode is charged from attack by the others. P(Party insane mode): this mode is displayed in party status only and is charged from attack by the others.	
6	Status gauge	Character level and status are displayed. Slayer : red: HP(health point), blue: MP(mana point) Vampire : red: HP(health point) Ousters : red: HP(health point), blue: EP(energy point)	
7	Quick item slot screen	Item and skills registered in belt and arms band screen are displayed.	
8	Help screen	Click to see help guide.	
9	Quick skill screen	Currently activated skills are displayed. You can check or appoint the skills you learnt by clicking the skill.	
10	Mini map (Shortcut: M, Ctrl + M)	You can check the current location. ※ Green zone is safe zone and +on the map is NPC.	
11	Game menu screen	The game menu at the bottom is displayed and opened by clicking this menu.	
		Game information	You can open my information, skill information, quest, pet information screens
		Guild	You can open guild information, guild list, awaiting guild and guild member.
		Community	You can open friends list, party screen and letter box.
		Store	You can open Daden market, personal store and shopping list.
		Help	You can see basic help guide
Etc.	You can change option, logout and finish the game.		