

POCKET PENGUIN™

ポケットペンギン

INSTRUCTION BOOKLET

CONTENTS

CONTENTS	2
STORY	3
CONTROLS	4
GAME SCREEN	5
ITEMS	6
STAGES	8
HINTS	14



STORY

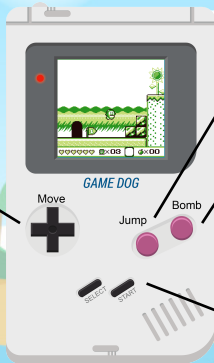
When penguins leave Antarctica in search for fish out in the sea, they sail aboard the S.S. Ushuaia. Aboard the ship, lives a blue penguin called “Pichi”, who is the most adorable penguin in the south pole. One day, the penguins were fishing in the Atlantic Ocean when suddenly... BOOM! S.S. Ushuaia is under attack! Nanuk the Bear, the pirate from the north pole has taken the ship, kidnapped the crew, and stole their fish... Poor penguins!

After the attack, the only penguin that was able to escape, was Pichi, the little blue penguin.

Pichi, you are the only one with the courage to save them all!

CONTROLS

Arrow Keys:
Select Options.
Move Pichi.

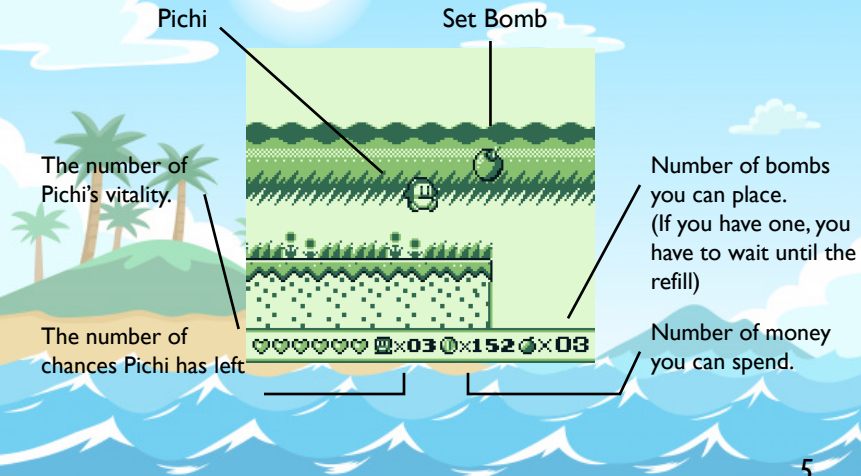


Z Key: Jump
(While jumping press Z jump higher)

X Key: Set bombs.
(While jumping press Z to set a bomb in the air)

Enter Key: Pause the game.
(Press Alt+Enter for fullscreen mode or windowed mode)

GAMESCREEN



ITEMS

In the world of Pocket Penguin there are a lot of fierce enemies that will try to beat you. Here are the items that will support you. Be brave!



Bomb

Blast your opponents with this powerful weapon. You can even use this as an extra platform, but be careful, if the bomb explodes and you are close, you can be damage.



Food

Just remember, every hero needs to eat at least 3 times a day. When you collect food you recover one point of vitality.



Mulgis

The most valuable currency in all of the world. Be sure to collect a ton. It can be spent in -Mr. Warlus Mart- to obtain a items. "Coolest drinks, Coolest deals"





Extra life

You don't have to worry if you lose all of your health or fall into a pit. This handy item increases the number of chances that Pichi have in one.



Extra bomb

This special item increases the number of bombs you can carry in one, so you don't need to wait until the bombs refill.



Ice Cream

A delicious dessert. If you have zero points of vitality, this one use only item give you some extra health. Be careful, it won't save you from falling.



Heart C.

I'm sure you know this item, Don't you?
Try to find them all!

STAGES

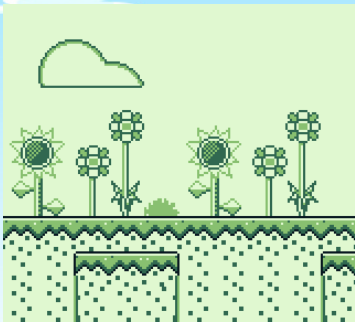
The world is big and dangerous, especially for a small penguin. Here is a small peak of what the road to the north pole looks.

World 1: Peaceful Plains.

This is the first place you'll encounter. It's a great place to start your journey. This is a natural place fill with flowers, insects and trees. Don't be distracted with all of the cuteness, because a lot of animals will be dangerous for a small penguin. This is a training world, that explains the gameplay of Pocket Penguin.

Boss 1: Hop Hop Bunny

With a lot of jumps and persequission, this enemy will try to stomp you with his powerful legs.



World 2: Old Desert.

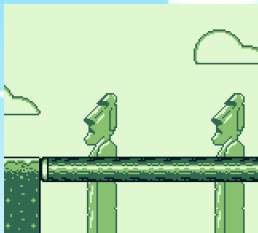
Explore this fantastic desert with hot air, rocky sand and nature that survives in this extreme environment.

You will encounter the ruins of an old civilization that had a lot of technology, leaving behind a trail of his knowledge in the inscriptions.

Boss 2: Giant Bat.

In the top of the big pyramid, you will find the reason of the extinction of the people in this area.

Use their technology in your advantage, but be aware, he is not alone...





World 3: Lavender Ocean.

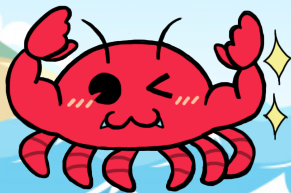
A summer vacation in Lavender Ocean could be the most relaxing way to spend your time.

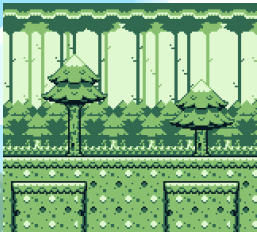
This island paradise is in the middle of the ocean.

Just look behind, something could be chasing you..

Boss 3: Mr. Chompers.

Swim little penguin! Just Swim!
Mr. Chompers is chasing you!





World 4: Autumn Forest.

In the northern mountains there is an immense forest, full of flora and fauna.

This forest is a natural barrier that separates the southern meadows with the tundra, being the right way to the north pole.

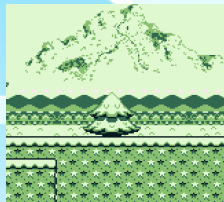
Boss 4: Mother Eagle

In the top of the mountain there is a nest, where the Mother Eagle is waiting for you to be the next meal of her children.



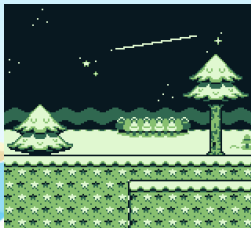
World 5: Risky Ice (Tundra).

Marvel at this snowy landscape where Christmas is eternal. Enjoy the night in the tundra, amazed by the stars and the wonderful winter air. A beautiful ice passage heading to polar bear castle



Boss 5: Arctic Jellyfish.

Beneath the Arctic ice are unimaginable creatures, full of unknown dangers. Watch out for this winter animal, as it has evolved to launch sparks to hunt their prey.



World 6: Risky Ice (Castle).

Finally, the path has led you to this point. An endless storm of snow invades Captain Nanuk's castle. A place full of icy traps. Welcome to the final battle.

Boss 6: Nanuk, The Bear.

The most feared polar bear at the north pole. Prepare for the fiercest battle that a Pocket Penguin may have.



HINTS

- *Although the bombs can damage you, they are not solid objects, so you can pass through them.*
- *You can get to higher places, if you use the bombs as a ladder.*
- *You can run towards enemies, they will only take one heart away from you, but don't be lazy, use the bombs.*
- *Enemies can drop items, sometimes they drop more than one.*
- *If you are stuck in a box, use the bombs.*
- *You can reset the game by pressing - R Key -*