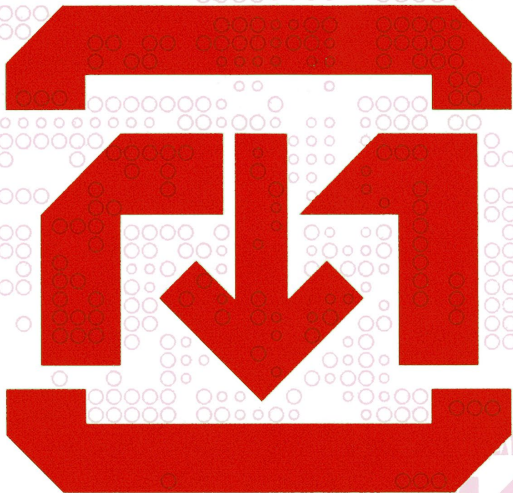


IN-FLIGHT MANUAL



FOR USE HEREIN

This could be a highly
intensive experience. Please
fasten your seatbelt and
HOLD TIGHT

TITAN: SAFETY - 3348

Read it and weep...

HARDWAR MANAGER

1. Insert the CD-ROM into the CD-ROM drive, picture side facing upwards.
2. The installation program will automatically load. If the installation program does not load straight away, double click on the My Computer icon, then double click on the CD-ROM icon. Within the new window you can highlight and select the Setup.Exe icon to install the game.
3. You will need to select the drive and directory where the program is to be installed. The default destination will be displayed on the screen. If you wish to change the destination drive and directory for the game, click on the Browse button. You can then locate the correct drive and folder where the game is to be installed, for example d:\Hardwar. If you wish to create a new directory for the game, highlight and select the Install Directory box, then type the new name. Click on OK when you are satisfied with the destination path.
4. To install the game to the specified directory, click on Install.
5. The installation program can automatically detect DirectX™ v5 if it is already installed. If components of DirectX™ v5 or higher are not installed or up to date, then it will be updated automatically. Follow the on-screen instructions to ensure that this is completed correctly.
6. Once the installation has been completed, click on Close to exit the Hardwar Manager and restart the computer.



TO RUN HARDWAR

Enter the Start menu and select Programs, then start the game by selecting the Hardwar icon. As this runs the game from Windows® 95, it's a good idea to have as few other applications running as possible.

You must configure your Joystick and Mouse from within Windows® 95 before playing Hardwar. To configure these items, highlight and select the relevant icons in the Control Panel within the Start menu. Set up the devices within these dialogue boxes, following any on-screen instructions carefully.

Windows® is a registered trademark of Microsoft.



HARDWAR SETTINGS AND OPTIONS

When you start Hardwar, you will be presented with a window featuring the game settings and options. By clicking on the menu tabs, you can access further options for playing the game. Each of these menus feature different options, all of which can be operated with the mouse. You must set all of these options before entering the game world, as you will not be able to adjust these options without exiting the game and returning to this menu.

Game

The Game menu features the main options for Hardwar. The Exit option will quit the program and return to Windows. The UnInstall option will allow you to remove the game from the hard drive. It is also possible to uninstall the game by accessing the Add/Remove Programs option from the Control Panel. Clicking on the Readme option will open a text file containing extra information not featured in this manual. When you are ready to start the game, click on the Launch option.

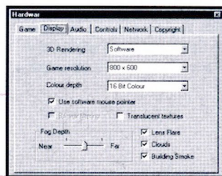
There are two different options available for starting a single player game.

- **Start a new world** - This allows you to start a new single player world. When prompted, enter a name for this new game, then click on the Save button.
- **Continue running a saved world** - Continue playing a previous single player world. When the game selection window appears, select the game you wish to play, then click on the Open button.

There are several further options available for starting or joining a multiplayer game.

- **Connect to a network game** - Connect to a multiplayer game server.
- **Host a new network game** - Start a new multiplayer game server.
- **Continue a saved network game** - Continue playing a previously saved multiplayer game server.

Refer to the Multiplayer Game Worlds section later in the manual, for further details about starting and joining a multiplayer game server.



Display

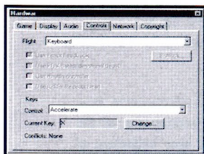
There are several options available to change the graphic settings of the game. If you have a compatible 3D graphics accelerator card, then you can select this using the 3D Rendering option. This will enable the game to use the additional features provided by this hardware. The other options allow you to adjust the screen resolution and the amount of graphical detail displayed in the game. The exact options available on this menu will change according to the setting of the 3D Rendering option.





Audio

The Audio menu will present you with several options for adjusting the sound and music within the game. These allow you to specify the type of sound to be played, the current sample rates and the volume levels.



Controls

The Controls menu allows you to redefine the game controls. The Flight option will change the type of controller used for the flight controls of the Moth. This can be set to Keyboard, Joystick, Gamepad or Mouse.

Selecting Joystick will allow you to define several further options, depending on the features available from this device. Using the Buttons option will allow you to redefine the button actions from the selected control device (either Joystick, Gamepad or Mouse). Click the Buttons

option, then highlight one of the listed buttons for your controller. You can then use the Assign To option to select a new action for this button.

The options listed in the Keys box will allow you to redefine all of the other controls used in the game. Use the Control option to select the game action you wish to redefine. The Control Key option will display the key that currently operates this game action. If you wish to change this, select the Change option then press your preferred key. The Conflict option will indicate if your selection is currently used for two different actions, so you can change one before starting the game.

Network

The Network menu provides several settings for the multiplayer game. These options do not affect the single player game. The Player Announcement option will define the message that is sent to the other players as you join. This will allow you to enter the game anonymously, or transmit your name to the other players. Setting this option to Name & Target will not only transmit your name to the other players, but it will also provide a Target option, allowing the other players to immediately lock you into their Targeting systems. Refer to the Target section later in the manual for further details about the Targeting system.

There are several further options for the multiplayer game. Using these options, it is possible to include or remove the CPU pilots, limit the playing area to the Alpha crater, and create random Moths in the game world. To increase the stakes, you can also switch the Blood Money option On. With this set, you can steal money from any player who dies at your hands. Extreme violence can very quickly prove to be a profitable enterprise! Refer to the Multiplayer Game Worlds section later in the manual for further details about multiplayer and network games.

Copyright

The legal notices and credits for the game.



HARDWAR

Titan. A freezing moon within our own solar system. A neglected mining outpost, established centuries ago within a series of craters. Once, it proved to be a profitable enterprise, but the corporations backed out, leaving the staff and colonists to fend for themselves. This is the bleak city of Misplaced Optimism.

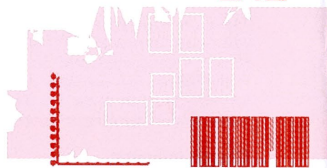
Factions have formed in the intervening years. A political and military stalemate has evolved, where organisations hoard and grudgingly trade the scarce resources in an attempt to survive. All the time, they watch for a break that may tilt the balance of power in their favour.

The factions themselves are not the wholesome corporations they once were. Their distrust has led to the use of some extremely unorthodox methods, always keeping the power and control among a select few. Centuries of interbreeding, mass cloning, genocidal class cleansing, sterilisation and other spiteful operations have all contributed to shape a race that can only tenuously be labelled 'Human'. After two hundred years of isolation, the inhabitants have become both morally and genetically corrupt. Little will motivate these souls, but there is one common desire: To leave this cold, harsh rock.

Those who earn their wings can make a good living, whether they work as traders, or become entwined in the ferocious power struggle that has emerged from the ever-growing social tension. Information, thoughts, feelings and rumours are echoed around the city by the neutral, but informative Hardwarp FM. For many, it's a way of holding onto sanity, but for others? It's an opportunity...



MISPLACEDOPT
MISHWHEREHE
SUNDONSHINE





THE CONSOLE

All of the menus featured in the game can be operated by using the mouse to highlight an option, then pressing the left mouse button to select. The main game options are presented within the Console.

When you select Join World you will be asked to enter a name for your pilot. As a new pilot, you can start Hardwar from one of three configurations: Trader, Scavenger or Aggressor. All new players start with \$10,000 and the Silver-Y Moth. This is a small, versatile vehicle used by a majority of new pilots venturing to the outside world. The set-up and configuration of the Moth will vary, depending on the type of operative you choose. These options only define the starting configuration of your Moth. Even if you start out as a Trader you could quite easily find yourself being an Aggressor, depending on what you buy and how you act. As you highlight each option with the mouse pointer, a full description of the Moth's weapons, fittings, CPU and location will be displayed. After you have selected a type of operative, you will enter the Hangar. By pressing the ESC key during the game, you can return to the Console.

Shutdown

Highlighting and selecting this option will shutdown the game and return to Windows. If you wish to return to this game at a later time, remember to use the Save World option before using the Shutdown option. If you do not save before exiting, any progress you have made in the game will be lost.

Save World

This option allows you to save the current world, including all of your pilot and Moth details. Highlight and select the OK option to confirm the operation and return to the Console. To load this world at a later date, use the Continue Running A Saved World option from the Hardwar Manager. This will present a list of your saved games.

Continue

If you wish to exit the Console and continue with the game, highlight and select the Continue option or press the ESC key.





THE HANGAR

Every time you start a new pilot, or dock inside one of the many hangars, you will be presented with the Hangar options.

Launch Moth

This will start the automatic sequence to launch your moth from the hangar.

Get Out Of Moth

By getting out of the Moth, you will be able to either order a Taxi or board a different Moth (if you own more than one). The Board Moth option will present several further options. Use the Next Bay option to view the different hangar bays. As you locate one of your own Moths, you will be presented with the Board option. This will allow you to climb aboard, ready to launch.

The Call Taxi option will order a Taxi to your current location. This can take you to a different hangar without using one of your own Moths, but only for a price. You only need to call a taxi if you want to travel without using your Moth. Use the left/right arrow options to toggle between the available destinations. As you do this, the cost of the journey will be displayed. If you then select the Call Taxi option, the order will be confirmed and the cost of the journey will be deducted from your account. After a short time, the Taxi will dock in the hangar ready to collect you. This will present you with the option to either board or cancel the Taxi. Be careful, if you decide to cancel the Taxi at this point, you will still be charged for their wasted journey!





Messages

Messages around this barren rock are transmitted via e-mail. Many rumours and statements fly around the city of Misplaced Optimism, transmitted by the neutral but informative Hardwarp FM. Check them out and see what's going on because some weird things are starting to happen around here...

The Messages screen will display all of your current messages in a list. If this list is too large to fit on the screen, you can use the up/down arrows to scroll through the messages. Unread messages will be marked with two stars, under the New column. High priority messages will be indicated by a star on either side of the Subject column, ignore these and you could end up missing vital information! If you wish to open an e-mail and read the full message, click over the message title. This will present you with the message contents and several options. These options will vary depending on the contents of the message.

Delete

Once you have finished reading a message, you can delete it by selecting the Delete option.

Target Sender

This option makes it easy to locate the sender of a message. Once you exit to the cockpit view, the sender's location will be locked into the Targeting system. Refer to the Target section later in the manual for further details about the Targeting system.

Target Subject

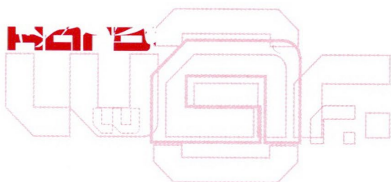
Rather than targeting the sender of a message, you may want to target the subject of the message. The subject could be a person, place, or a specific object. Selecting this option will lock the subject into the targeting system of your Moth. Refer to the Target section later in the manual for further details about the Targeting system.

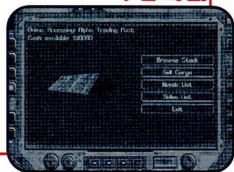
Exit

This option will exit the current message and return to the Messages screen.



HARDWARP.fm





Access Computer

These options will vary depending on which building you have entered and what type of business is involved. Trading stock and purchasing upgrades for your Moth is completed using these computers accessed from the hangars.

The Browse Stock option will allow you to view and buy the goods available from the current hangar. Details about the currently selected item will be displayed on the left side of the screen. To toggle through the available goods, use the left/right arrows. The Info and Pricing options will toggle the type of information presented about the current item. The Buy option will purchase the displayed item and load it to the cargo pod of your Moth (providing one is fitted). If this item can also be used to upgrade your Moth, then the Fit option will be made available. Selecting the Fit option will purchase the item, then fit it to your Moth rather than loading it into the cargo pod. This will include items like salvage drones and new weaponry.

Some buildings will provide a 'needs' list of trade items, so you can hunt them down and return for a guaranteed sale. Others, such as the Police, would like you to assist in their work and become a bounty hunter. In these cases, you will be presented with a wanted list and the Target option. This will set your Navigation computer to target a particular person.

Breaker Maker facilities can offer a Moth repair service. This allows you to repair any damage you may have sustained while going about your business in the craters. There are many other services and traders throughout the world, refer to the Building Installations section later in the manual for further details.





Navigation

The Navigation computer is very useful for quickly targeting local buildings and services. This will present a basic map of the areas visited and several options for accessing specific targets.



Pilots

The Pilots option stores a record of the last ten pilots locked into the Targeting system. This allows you to quickly and easily select a target, even if they are no longer in your local area. Use the Next and Previous options to toggle through the different pilots, then select the Target option to lock one into the Targeting system. If you wish to delete a pilot from this record, then use the Remove option. Once the list has a maximum of ten entries, the earliest recorded pilots will be over-written with new targets. If you wish to keep these, you can protect them using the Lock option. This will prevent the computer from over-writing the pilot until Unlock has been selected.

Buildings

This option lists the last twenty buildings targeted by your Moth, which acts as a simple record of your recent travels. Use the Next and Previous options to toggle through the different locations, then select Target to lock one into the Targeting system. This is very useful if you have started a trade route from one location to another. If you wish to delete a building from this record, then use the Remove option. Once the list has a maximum of twenty entries, the earliest recorded buildings will be over-written with new locations. If you wish to keep these, you can protect them using the Lock option. This will prevent the computer from over-writing the location until Unlock has been selected.

Radar Range

This option will list all of the vehicles within your radar range. Highlight and select a target from the list to lock it into the Targeting system.

Local Services

The Local Services option allows you to target the nearest service buildings such as traders, repair shops, armouries, Lightwells and the Police. Highlight and select a target from the list to lock it into the Targeting system.



CONTROLS

The Default Keys for Hardware can be redefined from the Hardware Settings & Options menu. Refer to this section earlier in the manual for exact details.

Flight Controls

Down Cursor Key

Up Cursor Key

Left Cursor Key

Right Cursor Key

CTRL

X

Z

BACKSPACE

RETURN

RIGHT SHIFT

Nose Up

Nose Down

Left

Right

Jink (Together with the directional controls)

Forward Thrust

Reverse Thrust

Ahead Max

Stop

Reverse Max

Weapon System

SPACE

Q or W

T

Y

F

R

S

Fire Selected Weapon

Toggle Selected Weapon

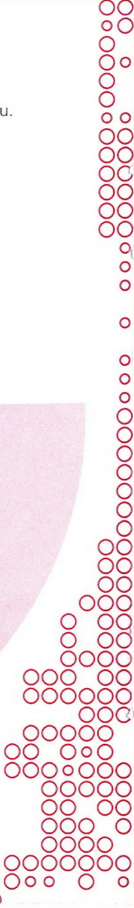
Target Object In Centre Sights

Target Next Vehicle In Radar Range

Flare

Chaff

Starshell



Additional Systems

M	Message System
N	Navigation System
D	Deploy Salvage Drone (D to select then again to launch)
J	Jettison Cargo Pod (Will request confirmation)
I	Infra Red Nightscope
H	HUD Function (Heads-Up-Display Function)
C	Chat (Multiplayer Game Only)
U	Player Rankings (Multiplayer Game Only)
ESC	Return To Console

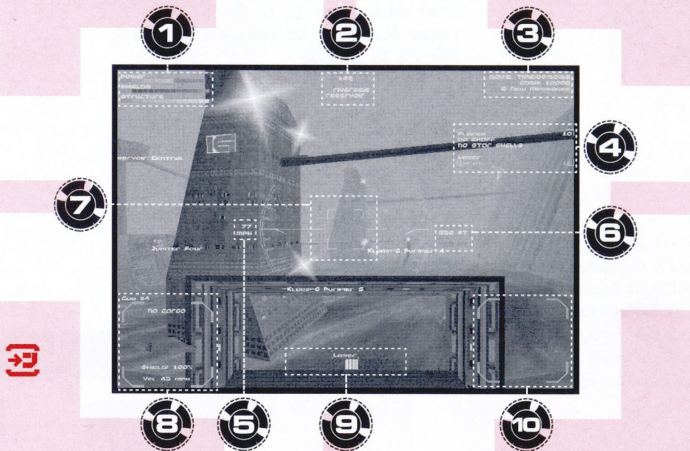
Cams

F1	Cockpit View
F2	External View
F3	Target View
F4	Chase View
F5	InvTarget View
INSERT (number pad)	Pan View Left
DELETE (number pad)	Pan View Right
PG DOWN (number pad)	Pan View Down
PG UP (number pad)	Pan View Up
+ (number pad)	Zoom View In
- (number pad)	Zoom View Out
5 (number pad)	View Special



FLYING THE MOTH HUD (Heads-Up-Display)

The HUD (Heads-Up-Display) provides a combined view of the cockpit indicators, CPU systems and the outside world. By pressing H on the keyboard, it is possible to toggle certain information displayed to show either the weapons fitted, the hardware fitted, or the current cargo loaded into the cargo pod. The exact information displayed will also change according to the type and level of software currently installed into the CPU.



1. Moth Status
2. Compass and Location
3. World Clock, Cash, and Message Alert
4. Cargo, Fittings and Weapon System
5. Speed
6. Altitude
7. Central Sights
8. Targeting System
9. Thrust Level and Currently Selected Weapon
10. Radar

0201500 □



Flight Controls

When you select the Launch Moth command from inside a hangar, the automatic launch sequence will start. Once the Moth has been loaded into the airlock, the outer doors will open and you will be given control. Use the Forward Thrust to power the Moth out of the airlock. Warning: If you do not leave the airlock, the hangar security system will be activated. This will open fire on any Moth that does not leave the airlock in a short time.

The Forward and Reverse Thrust controls can be used to move the Moth forwards or backwards. As you apply Forward Thrust, the Thrust Level will move to the right. Using Reverse Thrust will move the Thrust Level to the left, towards the centre point. Once the Thrust Level reaches the centre point (no thrust), you can press the Reverse Thrust control again to move backwards. The Thrust Level will then move to the left accordingly. Pressing the Forward Max or Reverse Max controls will apply the maximum possible thrust to a particular direction, very useful if you wish to make a fast getaway! The current speed of your Moth is displayed on the left side of the HUD. The actual top speed achieved by your Moth will depend on the model and upgrades currently installed. When you first start a new pilot, you will be issued with the smallest Moth, the Silver-Y. This is a fairly low powered vehicle, which is only capable of a low speed. Check out the different traders for bigger and better Moths!

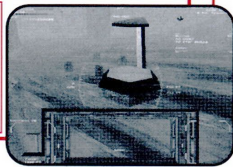
The tilt and roll of the Moth can be controlled using the cursor keys. Holding the CTRL key at the same time as a direction will force the Moth to Jink. This means that rather than tilting or rolling the craft, a gentle thrust will be applied to give either vertical or horizontal movement. If you are using a Joystick, Gamepad or Mouse for the main flight controls, you can use the cursor keys for the jinking manoeuvre, rather than holding the CTRL key.

The current Altitude of your Moth is displayed in two ways, the upper figure displays the height above sea level and the lower figure displays the height above the nearest vertical object (any object directly below the craft). Avoid hitting the ground and buildings at all costs. The Moths are robust but they will sustain structural and CPU damage, which will weaken the craft. If you sustain damage, remember to use the repair shops to service the Moth. CPU damage will cause software to be erased from the memory. The only way to replace this is to purchase new software upgrades from the traders. Also beware of flying too high, leaving this barren rock may be the ultimate goal of most inhabitants, but it does still remain well out of reach. The Moths are not capable of flying at high altitudes and will stall when pushed too far.

COUNTDOWN: 10987654321!..:

Moth Status

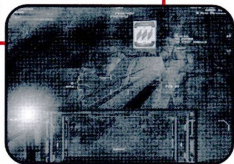
The Moth Status section of the Heads-Up-Display indicates several items relating to the operational status of the vehicle, including levels for the power cells, structure integrity, engines, weaponry and the CPU. These are indicated by several coloured bars which will change size to show the relevant level. As you install further upgrades, the information displayed will increase and become more varied, with the last bar continuously cycling between Structure, CPU, Power, Weapons and Engine Integrity.



The power cells fitted to your Moth are solar powered, as are most vehicles on this planet. Through general use of the Moth, the power cells will run out of power and need to be recharged. Normal daylight is not sufficient to provide a full recharge, so all pilots need to use the Lightwells. The Lightwells are medium height structures, with octagonal shaped tops and a powerful white light beaming down. To use one of these, you must hover underneath the white light for a short time until your power cells have recharged. Many traders will be able to supply you with larger, more efficient power cells. These will generally last much

longer than the standard power cells and require less recharging time. This will allow you to spend less time under the Lightwells and get on with the more important tasks.

The basic Silver-Y Moth is the smallest model available, meaning that it's fittings can only carry the smaller upgrades and weapons. The Moth factories will produce and sell larger vehicles, which are generally better equipped and able to carry more fittings. As damage and general wear takes its toll, you will find it necessary to pay for repairs. If you do not look after your Moth, it can show a variety of problems, from the control and handling, to the operation of the CPU and HUD.



Moth Navigation

The top centre of the HUD shows the compass heading and the name of your current location. As you turn the Moth, the compass will change accordingly to show the new direction. All of the different craters are linked by a series of tunnels. Your current location will be displayed under the compass on the HUD. When you turn into the direction of a tunnel, the name of the destination crater will also be displayed under the compass.

Pressing the N key will switch to the Navigation computer, just as from the Hangar options menu. This provides you with a quick and easy method of targeting a new destination, at almost any time during a flight. Refer to the Navigation section earlier in the manual for further details.



Target

The Target window indicates your currently selected target, which could be either a building, an object or another Moth. You need to learn how this system operates so you can accurately navigate around the craters and use the weapon systems. To target an item, line it up with the central sights of the HUD, then press T to lock it into the Targeting system. As you do this, you will see the new target appear in the Target window on the HUD. This will also indicate a certain amount of information about the object, such as identification, location and distance.

In some cases, you may be too far from your desired target to use the sights. Pressing Y on the keyboard will toggle through the vehicles and objects currently visible on the radar. As you toggle through these, they will each lock into the Targeting system and appear in the HUD. To target more distant places, you can use the Navigation computer. This will allow you to lock buildings or vehicles into the targeting system, even though they may be well out of your radar range. Refer to the Navigation section earlier in the manual for further details.

Once an item is locked into the Targeting system, guides will appear on the HUD to help you locate the current target. If the direction of the target is outside the HUD, an arrow will indicate which way you must turn. Once you are directly in line with the target, it will be marked with a green box. If the target is located in a different crater, you will first be directed to the connecting tunnels, then as you arrive in the correct crater you will be guided to the target.

Radar

The Radar is used to keep track of the other objects in your local area. Radar detection will ignore buildings and landmarks, just displaying the other vehicles and possible salvage objects.

Moths in the local area will appear on the Radar display as yellow arrows. The Monorail cars will appear as blue coloured arrows. The direction of the arrow indicates a difference in height between you and the other vehicle. If the arrow is pointing up, then the other vehicle is at a higher altitude than you. If the arrow is pointing down, then this vehicle is below your current altitude. The Monorail cars will appear as blue coloured arrows. When you target any of these vehicles they will turn red on the radar. A red line from one of the vehicles to the centre point of the Radar indicates that you have been targeted by somebody else. This will also be followed by a warning message, advising you of the danger. Any loose cargo or scrap metal (often from a crashed Moth) will be coloured white and can be targeted ready for collection.





Combat

Taking on a fight may not be your own choice in this world, but it could be your only means of survival. Use the Targeting system to select a target for your attack, then use the HUD to point you in the right direction. When the target becomes visible in your HUD, it will be marked with a green square.



When using the lasers, line-up the sights on the HUD with the target Moth. As you get close enough, the central sights will turn red to indicate that the lasers are locked onto the target. Hit the fire button to release a volley of shots, remembering to keep the target at the centre of your sights. Missiles are a little easier to handle and far more lethal, but the cost can prove to be a limitation. As soon as the target Moth is close enough, the green target square will turn red. This indicates that your missile is locked and ready to fire. Be careful though, good pilots will use the Flares and Chaff as decoys, leaving your expensive missiles confused and aimless!

Crippled Moths will often make a desperate run for freedom if seriously damaged. They may even give up their valuable cargo in order to escape with their lives. This can also work in your benefit when under attack, only the most ruthless pilots will continue hunting until they achieve a kill.

Weapon System

The Weapon system is your own devastating line of defence and attack against the dangers that exist in the craters. The current armaments for your Moth are displayed on the right side of the HUD. The first two items listed are Flares and Chaff. These are used to try and deflect incoming missiles from hostile forces. The Starshells are not a defence mechanism, but a simple bright burst of light that will brighten the surrounding area, as if it was daylight.

The basic Silver-Y Moths are armed with the Lasers as standard. A series of other weapons and upgrades are available from the different traders, such as high powered lasers and guided missiles.

For protection, every Moth is fitted with a shield which can absorb damage from almost any type of weapon. Absorbing shots from other craft will gradually deplete the shield energy, until it is completely discharged. Providing enough time is given, the shield will slowly regenerate itself. Without having a shield fitted and charged, any hits taken will cause a serious amount of damage to the structure, engines, power systems and the CPU. This damage will be apparent in the overall performance of the Moth and in the presentation of the HUD and CPU. Repairs to the Moth can be made at a local service centre, such as Breaker Maker. Upgrades to the shield software can also be purchased. These upgrades will allow you to improve the shield generators, giving better operating efficiency and more protection.



Salvage

Salvage recovery can be a rewarding business for those willing to work honestly in this dangerous world. Scrap metals and lost cargo can be found in the craters, usually left by the unlucky pilots. Collecting and selling this haul can prove very profitable, but you could also find yourself up against tough competition. Dogfights can leave the surrounding area littered with wreckage and scraps, which will always attract a small crowd of scavengers. Of course, if there are no scraps to be found, a resourceful pilot could try creating a few...

To collect salvage, you will need to fit your Moth with a Salvage Drone and a Cargo Pod. These can be bought from many different traders, including Breaker Maker and Psycho Bobs. The Salvage Drones are small, manoeuvrable little craft, that can automatically collect salvage from the surface and then load it into the cargo pod of your Moth. Use the Targeting system to locate and identify the salvage, then press D to initiate the drone. Pressing D a second time will launch the drone, providing you are close enough to the target. If you are too far from the target, the drone will display an error on the HUD until you fly closer. Once the drone has been successfully launched, details will be displayed on the HUD about its progress. After a short time, it will return and load the salvage into the cargo pod. You can then return to a trader and sell your cargo for a quick, easy profit.

Messages

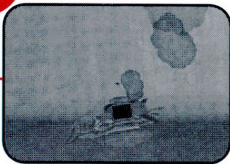
When you receive a new e-mail via the Message system, an indicator will appear in the top right corner of the HUD. You can enter the Message computer at any time by pressing M on the keyboard. This will present you with the Message system as found in the Hangar menu. Refer to the Hangar menu earlier in the manual for further details about its operation.

The CPU

Your craft's CPU is one of, if not the most crucial pieces of equipment on-board your Moth. It regulates all of the different systems, displaying their current status via your HUD (Heads-Up-Display). The computer also controls the targeting, navigation, shields and the Auto Pilot facility. Changes will be noticeable with each software upgrade, both in the performance of the craft and in the presentation of the HUD. Every Moth has the same type of computer system and is capable of holding the same software, but each craft will use this to a different standard. If you're feeling adventurous or just wish to have the complete flexibility of manual controls, try downgrading the Moth's software. Certain basic tasks may seem difficult, but experienced pilots will appreciate the lack of computer involvement! Beware of CPU damage, as software can be erased from the system. Remember to replace lost software by purchasing the necessary upgrades.

SALVAGE:01





Cameras

The cameras provide you with several different views for playing the game. Probably the most useful camera for flying is the Cockpit View, as this also displays the HUD. While in this view you can use the Pan View controls to move your pilot's view. The External View will give an outside view of your Moth, without any of the additional flight details and HUD. In this mode, the Pan View controls will move the camera view around the outside of the Moth.

The Chase View will provide a fixed camera position looking from behind the Moth. The Target View and InvTarget View will show your Moth, in relation to the currently targeted vehicle, building or object. Target View will show your Moth from a position that also shows the current target in the distance, while InvTarget View (Inverse Target View) will show your Moth from the actual position of the current target.

Docking At Hangars

Entering hangars is simple: If you have an auto pilot then it's even simpler; just approach the hangar doors and hover in front of them. Once you are close, the doors will open and the Auto Pilot will take over, guiding you safely into the hangar bay. If you don't have an Auto Pilot then it's still simple, just fly and hover like before in front of the hangar doors. The doors will then open, allowing you to manually fly the Moth into the airlock. Once you are completely inside the airlock, stop the Moth so the hangar's CPU can take over and guide the landing. You will then be presented with the Hangar options menu. Refer to the Hangar section earlier in the manual for further details.

P

FREESPACES


MULTIPLAYER GAME WORLDS

To play a multiplayer game, you must first decide whether you are to host a multiplayer game world (game server), or whether you are to join an existing multiplayer game (client). If you only have one copy of Hardwar, it is still possible for several people to connect and play a multiplayer game. Ensure the game is installed onto each computer following the instructions detailed earlier in the manual, then return the CD-ROM to the game server. Use the Network options in Hardwar Settings and Options menu to set-up the multiplayer game. Once you are satisfied with game options, click the Launch button to start. Three multiplayer options will then be presented:

- **Connect to a network game** - Join an available multiplayer game server.
- **Host a new network game** - Start a new multiplayer game server.
- **Continue a saved network game** - Continue playing a previously saved multiplayer game server.

Hosting A Multiplayer Game

If you are starting a new multiplayer server, you must enter a session name so that connecting players can identify this game server. When you have typed a name, click on the Save option to start the game. If you wish to continue a previously saved multiplayer game server, then you must select a game from the file list and click the Open button. The game will then present you with a window for selecting the type of connection.

Selecting The Type Of Connection

Before you can proceed as a game server or client, you must specify the type of connection to be used for DirectPlay. Highlight and select one of the available connection types presented in the Select Service Provider window: IPX, Internet (TCP/IP), Modem or Serial. For Modem or Serial games to operate correctly, you will need to enter several settings relating to the connection type. The first time you connect, you will be presented with a dialogue box containing several options:

Modem

Set-up your Modem Type, COM Port, Baud Rate and the Ini. String in the Modem dialogue box (consult your modem user guide for exact details). If you use a digital phone network select TONE, if it's an analogue phone network select PULSE.

Serial

Check your Serial and Port Settings, then connect the two computers together using a standard null modem cable. Consult your computer's user manual to find out the correct BAUD RATE.



Joining A Multiplayer Game

To join a multiplayer game server, select the type of connection from those presented in the DirectPlay window. A list of available game servers will then be presented for this connection type. You can then choose a game server and click on the OK option to join the game.

The Multiplayer Console

Once the game has loaded, you will be presented with the options of either joining the world as a new pilot or entering the Console. By selecting the Join World option you can enter a name, just as in a single player game. The Console can be accessed in a multiplayer game by pressing the ESC key. The options will vary depending on whether you are the game server or client.

The server Console options:

Pause/Unpause World Highlighting and selecting Pause World will stop the world clock for every player involved. Selecting this option a second time will continue the game.

Retire Pilot This will allow you to end the game for your current pilot and re-join with a new pilot.

Shutdown Highlighting and selecting this option will shutdown the game and return to Windows. If you wish to return to this game at a later time, remember to use the Save World option before using the Shutdown option. If you do not save the game before exiting, any progress you have made in the game will be lost.

Save World This option allows you to save the current world, including all of your pilot and Moth details. Use the OK option to confirm the save, or select the Cancel option to abort.

Continue If you wish to exit the Console and continue with the game, highlight and select the Continue option or press the ESC key.

The client Console options:

Retire Pilot This will allow you to end the game for your current pilot and re-join with a new pilot.

Log Out This will retire your pilot and exit the game, returning you to Windows.

Continue If you wish to exit the Console and continue with the game, highlight and select the Continue option or press the ESC key.



[MAKE IT SO] :)

The Multiplayer World

When you join the multiplayer world, you will be placed into a randomly selected hangar, with a reasonably well equipped craft. In the multiplayer world, all players start with the same Moth configuration.

While messages and information can be received via the e-mail Message system, the multiplayer game also features a Chat system. This allows you to communicate directly with any of the other Human players. By pressing **C** to start the Chat system, you can type the name of a receiving player. If you do not type a name, the message will be transmitted to all connected players. Once you have sent or received a message, then the name of the last player contacted will appear in the name section. If you wish to change this name, either type the name of another player, or use the up/down cursor keys to toggle through the last few players contacted. Once you have chosen a receiver, you can type the message and press **Enter** to send. If you receive a chat message from another player, the Chat window will open and the message will be displayed, showing details of the sender.

As you play through a multiplayer game, details of the player rankings will be available. Press the **U** key on the keyboard to view your own progress in relation to all of the other players.

The Moth Hopping option found in the Network menu, will make it much easier to locate and use different Moths. Switching this option **On** will speed up production of new Moths, placing them into random hangars around the game world. These Moths will have completely random fittings, including the weapons and software. While you can still buy Moths in the normal way, a little searching can prove very rewarding!



HAVE A SAFE FIGHT...

CREDITS

Software

Refinery Crew

Programming

Ciaran Gultnieks

Ian Martin

Art

Mark Griffiths

Gremlin

Interactive Crew

Designer & Producer

Ade Carless

Test Supervisor

Steve Lycett

Lead Testers

Nicola Grice

Phil Eckford

Testers

Jon Wilson

Jon Blythe

Steve Lycett

Mick Eyre

Dave 'Sound' Imrie

Eric Neilson

Neil Wilson

Paul Chapman

Luke Warhurst

Dave Kirk

Matt Parkins

Asad Habi

Steve Blower

Andy Horne

Ian Whitaker

Matt Tuckett

Chloe Barber

Sound Effects

Kev Saville

Pat Phelan

QA Manager

Carl Cavers

Creative Manager

Pat Phelan

Technical Manager

Tim Heaton

Executive Producer

James North-Hearn

Manual & Packaging

Martin Calpin

Richard Cartwright

Chantal Beaumont

Localisation

Sarah Bennett

FMV Crew

Producer & Director

Alan Coltman

Camera Operator

Darren Mills

Lighting Camera

Mark Clayton

Prop Construction

Nik Hull

Make-Up Designer

Abigail Graves

Make-Up Assistant

Judith Crowe

Costume Stylist

Johnathon Musson

Script

Alan Coltman

Ade Carless

Scenic Artist

Les Spink

Digital Effects

Darren Mills

Sound

Kev Saville

FMV Cast

Psycho Bob

Richard Waters

Apprentice

Kati Williamson

Police Chief Saffle

Dave Roberts

Jason Lazarus

Richard Ryder

Xavier Lazarus

Gerry Kersey

Klamp-G Spokesperson

Kate Hull Rodgers

Gang Member 1

David Shimwell

Gang Member 2

Christopher Wilkinson

The Warden

Chris Brailsford

Syd

Benjamin Shephard

Police Über-Clerk

Ade Carless

Pest Controller

Les Spink

M.O. Denizens

Syd Franklin

Simon Short

Judith Crowe

Convict Children

Dudley Rees

Eleanor Tuckett

Richard Morgan

Rachael Morgan

Hardwar Veteran

Richard Waters

Hardwar Veteran's Girl

Kate Vale

Leechwoman Grinders

Reg & Dave

Package Design

The Designers Republic

Soundtrack

Warp Records

Special Thanks To

Sheila Chapman Of

Stagecoach Theatre Arts,

Sheffield. Philpa Howell

Personal Management. Paul

Desgranges, King Edward VII

School, Sheffield. Darren

Lambourne. Otto Personal

Management. Quadrant Video

Systems. Playlight,

Manchester

COPYRIGHTS

Warp Records

BLACK DOG Raxmus/Chase The Manhattan** Downie/Handley/Turner. PUP1/Spanners. LFO Tied Up/Shutdown*. Bell *Bell/Varley. WARP39/ Advance. ALTECHRE Clipper. WARP38/Tri Repetae. Second Bad Vilbel/Second Scepte. All Booth/ Brown. WAP64/Anvil Vapre. SQUAREPUSHER Chin Hippy*. Jenkinson. WARP50/Hard Normal Daddy. RAC Nine. Duckenfield/Benson. WAP61/Double Jointed . All Warp Music/EMI Music 7 1997* 7 1995 ** 7 1994 Warp Records Ltd except *** Chrysalis Music 7 1994 Warp Records Ltd.

ANY PROBLEMS?

If you have any problems installing Hardw[a]r, try closing down other programs and applications within Windows95 (eg, office programs, virus checker, disk and display utilities). If the problem persists, return the game to your retailer, or to Gremlin Interactive Limited at the address on the packaging. Before you call Gremlin's Helpline you should have the following information available for our operators. Contact your supplier if you do not know this information. The specification and manufacturers of the various hardware installed in your machine, including: • Processor (eg, 486DX/66) • RAM capacity (eg, 16 Mb RAM) • Sound card (eg, Sound Blaster 16) • Video card (eg, VGA/SVGA) • CDROM (eg, 8xspeed CDROM). You can contact the Gremlin Interactive Limited Helpline between the hours of 9.45am and 5.00pm UK time Monday to Friday, on 0114 279 9020. You can e-mail us on help@gremlin.co.uk. Alternatively, you can check the Tech Help and Helping Hand sections of our website at www.gremlin.co.uk

LIMITED WARRANTY

Gremlin Interactive Limited make no warranties, conditions or representations expressed or implied, with respect to this manual, its quality, merchantability or fitness for any particular purpose. This manual is provided "as is" and was correct at the time of going to press. Gremlin Interactive Limited make certain limited warranties with respect to the software and the media for the software. In no event shall Gremlin Interactive Limited be liable for any special, indirect or consequential loss or damages or any loss or damage caused by or suffered by reason of any loss or corruption of data arising in the use or inability to use the software. Gremlin Interactive Limited warrants to the original purchaser of this computer software product that the recording media on which the software programs are recorded will be free of defects in materials and workmanship for 90 days from the date of purchase. During this time period, faulty materials will be exchanged if the original product is returned to the place of purchase, together with a dated receipt of purchase or a copy thereof. This warranty is in addition to, and does not affect your statutory rights. This warranty does not apply to the software programs themselves, which are provided "as is", nor does it apply to media which has been subject to misuse, damage, corruption or excessive wear.

COPYRIGHT

© 1998 Copyright Gremlin Interactive Limited. All Rights Reserved. This manual and the information contained on the Hardw[a]r disk(s) are copyrighted by Gremlin Interactive Limited. The owner of this product is entitled to use this product for his or her own personal use only. No one may transfer, give or sell any part of the manual, or the information on the disc without the prior permission of Gremlin Interactive Limited. Any person or persons reproducing any part of the program, in any media, for any reason, shall be guilty of copyright violation, and subject to civil liability at the discretion of the copyright holder.

ZOOM PLATFORM EDITION CREDITS

Produced by:

Funbox Media, Jordan Freeman Group (DBA: ZOOM Platform)

Original Game Created by:

The Software Refinery

Ported to Modern Operating Systems by:

Jordan Freeman Group (DBA: ZOOM Platform)

Published by:

Funbox Media, Jordan Freeman Group (DBA: ZOOM Platform)

Funbox Media Staff:

Barry Hatch, Lee Brown

Jordan Freeman Group (DBA: ZOOM Platform) Staff:

Bernie Stolar, Jordan Freeman, Adam Hillson, Charley Londoño, Bernie Gilhuly, Raja Srungavarapu, Uma Srungavarapu, Scott David-Jones, Alex Chernov, Sean "Linko64" Halliday, Wiktoria Maksimowicz, PG Lomba, Mihai-Bogdan Munteanu, Jozen Blue Martinez, Rosen Iliev, Steve Crane, Paloma Estevez, Barry Leitch, Kelvin Nguyen, Manos Paterakis

Documentation:

PG Lomba, Jordan Freeman



ZOOM
PLATFORM MEDIA



JORDAN
FREEMAN
GROUP

