



## USER MANUAL

PC

VERSION 1.1





## **Important Health Warning About Playing Video Games**

### **Photosensitive Seizures**

A very small percentage of people may experience a seizure when exposed to certain visual images, including flashing lights or patterns that may appear in video games. Even people who have no history of seizures or epilepsy may have an undiagnosed condition that can cause these “photosensitive epileptic seizures” while watching video games.

These seizures may have a variety of symptoms, including lightheadedness, altered vision, eye or face twitching, jerking or shaking of arms or legs, disorientation, confusion, or momentary loss of awareness. Seizures may also cause loss of consciousness or convulsions that can lead to injury from falling down or striking nearby objects. Immediately stop playing and consult a doctor if you experience any of these symptoms. Parents should watch for or ask their children about the above symptoms—children and teenagers are more likely than adults to experience these seizures. The risk of photosensitive epileptic seizures may be reduced by taking the following precautions: Sit farther from the screen; use a smaller screen; play in a welllit room; and do not play when you are drowsy or fatigued. If you or any of your relatives have a history of seizures or epilepsy, consult a doctor before playing.

**TABLE OF CONTENT**

**1. Installation .....4**

**2. System Requirements .....4**

**3. Controls.....4**

**4. HUD and bonuses .....5**

**5. Save Game .....7**

**6. Additional Information .....7**

**7. Support .....7**

**8. F.A.Q.....8**

## 1. Installation

### DVD Version:

Insert the disk into your DVD-ROM drive and follow the prompts displayed on the screen.

### Digital Version:

Run the EXE file and follow the prompts displayed on the screen.

## 2. System Requirements

- OS: Windows XP or better
- CPU: 2Ghz x86 processor or better
- Video Card: 512MB NVIDIA or ATI card
- Memory: 1GB RAM or more
- Disk Space: at least 300MB
- Keyboard and/or gamepad,
- Mouse or touchpad

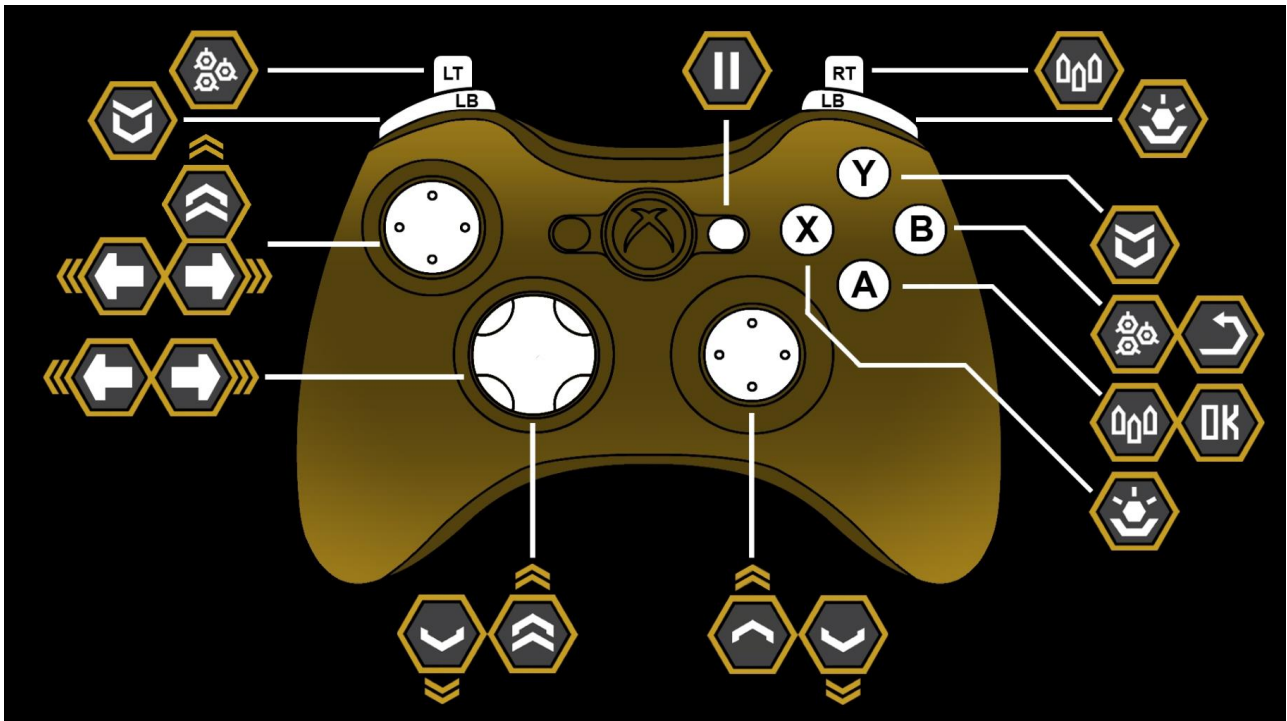
## 3. Controls

PLEASE NOTE. You can change the controls after you run the game. Below are the default settings :

Action	Main	Alternative
Turn left	Left arrow	A
Turn right	Right arrow	D
Brake	Down key	S
Acceleration*	Up key	W
Nitro	Alt key	F
Land Mine	Shift Key	E
Rocket	Ctrl Key	R
Gun	Space	Space
Shield	Q	Z
Pause	ESC	ESC

\*- Manual acceleration must be turned on in the Settings Menu!

**PLEASE NOTE: The gamepad is fully supported only if you turn it on in the Settings Menu!**



## 4. HUD and bonuses

After you collect a bonus, its icon will be displayed on the screen with the number of available units.



**SHIELD** – you will be immune to damage for a short period of time



**NITRO** – gives you an important speed boost



**BRAKE** – informs you that the brake is available



**ROCKETS** – displays the number of rockets available



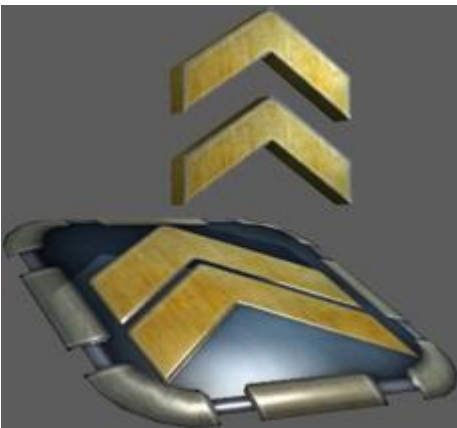
**MACHINE GUN** – displays the quantity of gun ammo available



**LAND MINES** – displays the number of mines available



**BARRIERS** – destroy them to get access to a shortcut.



**SPEED-UPS** – give you an important speed boost.



**BONUS ACTIVATORS** – spawn additional bonuses on the racing track.



**MINES** – avoid them at all cost.

## 5. Save Game

The game saves your progress automatically after each race and each purchase in the Garage.

## 6. Additional Information

For more information on the game please visit the official website: <http://f2.jujubee.pl>

## 7. Support

Support is provided in English and Polish, only via e-mail contact: [support@jujubee.pl](mailto:support@jujubee.pl).

## 8. F.A.Q.

- **Is it possible to turn off the glow effect?**

You can turn off the glow effect by setting the “Emmisse Equalizer” option to OFF.

- **Can I turn off the auto-acceleration feature?**

Yes, you can turn off this option in the Settings Menu.

- **Does this game have an fps lock?**

The game runs at 30 or 60 fps depending on the configuration of the computer.

- **Where can i find the bonus content (FLASHOUT 3D music and wallpapers)?**

The bonus content is located in your Steam installation folder, usually:

x:\Program Files(x86)\Steam\SteamApps\common\Flashout2\!bonus

- **Manual Auto-acceleration and game controller does not seem to work even though I turned them on in Settings.**

In some scenarios it might be required to turn off these options and turn them on again to make them active. Also make sure to plug your game controller to your computer before you run the game.

---

YOUR USE OF THE SOFTWARE IS SUBJECT TO THE TERMS SET FORTH BELOW. THE “SOFTWARE” INCLUDES ALL SOFTWARE INCLUDED (EXCEPT THE AUTOMATIC INSTALLER), THE ACCOMPANYING MANUAL(S), PACKAGING AND OTHER WRITTEN, FILES, ELECTRONIC OR ON-LINE MATERIALS OR DOCUMENTATION, AND ANY AND ALL COPIES OF SUCH SOFTWARE AND ITS MATERIALS. BY OPENING THE SOFTWARE, INSTALLING, AND/OR USING THE SOFTWARE AND ANY OTHER MATERIALS INCLUDED WITH THE SOFTWARE, YOU HEREBY ACCEPT THE TERMS BELOW WITH JUJUBEE S.A. (“LICENSOR”).

Licensor retains all right, title and interest to the Software, including, but not limited to, all copyrights, trademarks, trade secrets, trade names, proprietary rights, patents, titles, computer codes, audiovisual effects, themes, characters, character names, stories, dialog, settings, artwork, sounds effects, musical works, and moral rights. The Software is protected by copyright and trademark law and applicable laws and treaties throughout the world. The Software may not be copied, reproduced or distributed in any manner or medium, in whole or in part, without prior written consent from Licensor. Any persons copying, reproducing or distributing all or any portion of the Software in any manner or medium, will be willfully violating the copyright laws and may be subject to civil and criminal penalties in their local country.

© 2014, JUJUBEE S.A.

Jujubee® is a registered trademark of Jujubee S.A.