



aeroSOFT™

ALONG THE MOSELLE VALLEY

Manual



PAD Labs

Route: PAD-Labs GmbH
Kevin Proft, Lea Fischbach, Jessica Braun,
Eduard Krug, Maik Goltz (virtualRailroads)

Rolling stock: Virtual Railroads

Installation: Andreas Mügge

Copyright: © 2015 / **Aerosoft GmbH**
Airport Paderborn/Lippstadt
D-33142 Bueren, Germany
Tel: +49 (0) 29 55 / 76 03-10
Fax: +49 (0) 29 55 / 76 03-33
E-Mail: info@aerosoft.de
Internet: www.aerosoft.de
www.aerosoft.com



All trademarks and brand names are trademarks or registered trademarks of their respective owners. All rights reserved.



Along the Moselle valley Koblenz-Trier

Manual

Add-on for

Train Simulator 2016



Content

Starting off	5
Minimum system requirements.....	5
Installation	5
Copyrights.....	6
Credits	6
History	7
Our route in TS2016.....	8
Settings in Train Simulator.....	8
Route description	9
Rolling stock.....	11
Class 189	11
Class 628/928.....	12
Signal system.....	12
Scenarios	13
Regional Express to Trier	13
IC 132 to Trier.....	14
RB 94.....	14
First Morning train	14
To the Christmas Market Wittlich - Trier.....	15
Ore train to Ehrang part 1	15
Ore train to Ehrang part 2	15
Mixed freight train to the north part 1.....	16
Mixed freight train to the north part 2.....	16
Mixed freight train to the north part 3.....	17
Freight train to Cochem	17
Transfer to Wittlich.....	17
Annex.....	18
Known issues	18
Performance	18
Signals/PZB.....	18

Starting off

Minimum system requirements

- 64bit operating system Microsoft Windows 7, 8 or higher
- Train Simulator 2015 with European Assets and Loco Pack
- Processor 2,6GHz, DualCore or higher
- Video card with 1024MB, DirectX9c compatible
- 4GB free memory on your hard disk
- Minimum 8GB RAM

Installation

You will be asked to insert your registration key. Please keep your registration key in a safe place, you will need it again if a new installation is necessary.

To start the installation simply insert the DVD into your DVD drive or run the file downloaded from your shop account.

After selecting your preferred installation language, the welcome screen will appear and you will be presented with some important information and the license agreement. Please read it carefully.

Now you will be asked to insert your registration key. Please insert it exactly the way it was written on the label or in the confirmation mail you received from your download shop.

The installation program will attempt to locate the correct path.

Before the installer starts to copy the files onto your hard disc, you will be shown all the installation details.

The installation program will now copy all of the "Along the Moselle valley" files onto your hard disk.



Copyrights

This software, the manual, documentation, video images and all the related materials are protected by copyright laws. The software is licensed, not sold. You may install and run one copy of the software on one computer for your personal, non-commercial use. The software, the manual and all related materials must not be copied, photocopied, translated, reverse engineered, decompiled or reduced to any electronic medium or machine legible form, neither completely nor in part, without the previous written permission of AEROSOFT GmbH.

Credits

This add-on would probably not exist without Mathias Gundlach, his signalling team and especially his constant willingness to modify, add and improve things and to provide a functional signalling system.

It would have taken much longer to finish this route without the permission from Siegfried Derks to use these objects. Thank you Siegfried. Also thank you to Jan Bleiß from virtualTracks to allow us to use some of his 3D models.

The rolling stock and the PZB system comes from virtualRailroads. Thank you for supporting us.

The scenarios were designed by :
Edgar Thomas, Kevin Warum, Nils Hofmann, René Anselmi and Roman Glos.

We partly used textures from www.cgtextures.com for modelling this route.

And lastly, a special thankyou to all the beta testers.

History

The Moselle valley is one of the most beautiful and romantic landscapes in Germany. It is also one of Europe's most charming river valleys, giving the Moselle a river bed that is characterised by its gentle climate and its beautiful vineyards.

Our route departs at Koblenz main station and then leads to Moselweiß in a wide left turn where we can see a huge freight yard with lots of sidings and tracks.

After Moselweiß, the route crosses the Moselle for the first time at the Gülser Bridge. It will then follow the left bank of the Moselle to Cochem, all the while passing well-known wine villages such as Winningen or Löff.

After Cochem, we enter the Kaiser Wilhelm Tunnel. Our package represents the state of the original route from 2012. During this time some construction works were underway to modernize the route and to extend this tunnel. Our state of the route still uses the old double tracked tunnel tube while works are underway on the first of the new single track tubes.

Once we are out of the tunnel, we will head to Bullay through Ediger-Eller and Neef. Leaving Bullay again, we cross the well-known dual deck bridge and then the railway viaduct near Pünderich. It is here where the route branches off towards Traben-Trarbach, while the main route leaves the Moselle valley and proceeds to Trier through to Wittlich.

Near Quint, just a shy of Trier, the route meets the Moselle again. From here on we pass Ehrang with its large depot and goods station, cross the Moselle Bridge at Pfalzel to finally reach the main station in Trier.

Also included is the industrial area and harbour in Trier-Pfalzel.



Our route in TS2016

Settings in Train Simulator

To ensure the highest possible performance we recommend to check the graphic settings in Train Simulator 2016.

Please open the menu "Settings" - "Graphics" - "Advanced".
We recommend you set the sliders to values as shown in the image below:



Set Ani-Aliasing and Texture Filtering to values according to the performance of your video card.

The sliders for 'Scenery Quality' and 'View Distance' should be set to the second or maximum the third position from the left (as shown in the image).

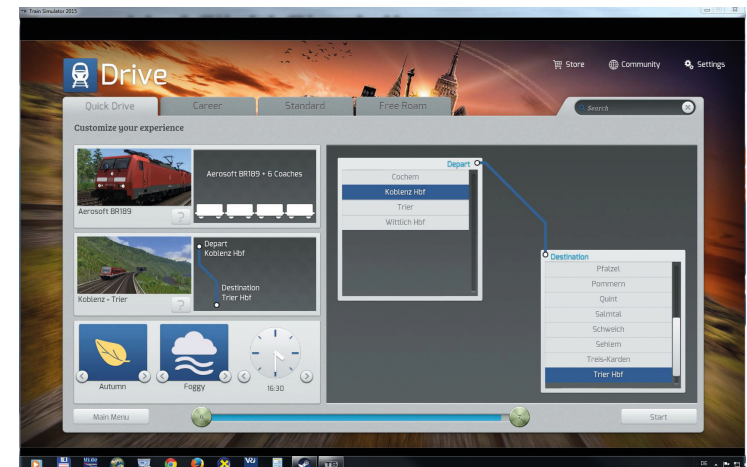
Set the sliders for 'Shadow quality' and 'Water Quality' to a medium position.

Click the 'Save' button to save the changes.

Route Description

We recommend using the 'Quick Drive' to get an impression of our route.

Select the route "Koblenz - Trier" from the Quick drive route menu, select depart and destination.



Select the loco and the consist you want to drive with. There are three Quick Drive consists with the class 189 included as well as the class 628 Diesel train for the branch from Bullay to Traben-Trarbach.

Click on 'Start' after you have made your choice.

Our route starts in Koblenz main station and goes in a wide left turn to Moselweiss. After Moselweiss the route crosses the Moselle river via the bridge in Guels.

After passing Guels the track follows the left hand bank of the river up to Cochem. From Cochem the route goes through the Kaiser-Wilhelm-Tunnel. Our route represents the tunnel in the period of time of reconstruction the tunnel. The construction works of the first of the two new planned tunnel tubes are already started but the trains are still driving through the old tube.

After passing the tunnel the route crosses the Moselle river for a second time and reaches Bullay. Leaving Bullay you drive over the well known double deck bridge to Puenderich. In this section the route goes over the impressive viaduct which gives you a wonderful panorama view of the Moselle Valley.

Now the main line leaves the river valley and goes via Wittlich to Trier. Shortly before Trier, next to Quint, the route comes back again to the river and goes via Ehrang to Trier.

Our route also include the single track branch line from Bullay to Traben-Trarbach.

The route includes the following stations:

Main line:

Koblenz Hbf	Koblenz Stadtmitte	Koblenz Moselweiß
Koblenz Guels	Winningen	Kobern-Gondorf
Lehmen	Kattenes	Löf
Hatzenport	Moselkern	Müden
Treis-Karden	Pommern	Klotten
Cochem	Ediger-Eller	Neef
Bullay	Bengel	Ürzig
Wittlich Hbf	Salmtal	Sehlem
Hetzerath	Föhren	Schweich
Quint	Ehrang Ort	Ehrang
Pfalzel	Trier Hbf	



Branch line:

Reil

Koevenig

Traben-Trarbach

There are two large marshalling yards, one in Koblenz Moselweiss and one in Ehrang.

Rolling stock

Our route includes some new rolling stock provided by virtualRailroads

It's the class 189 electric locomotive as well as the class 628/928 Diesel railcar.

Class 189



This electric loco is used for heavy freight duty.



Class 628/928



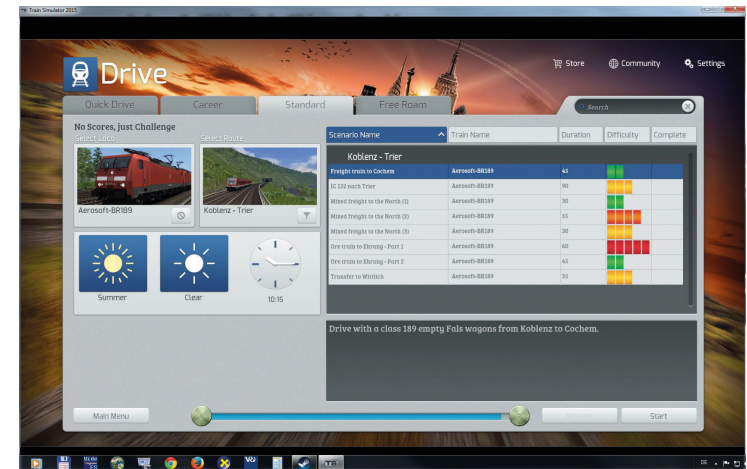
The class 628/928 trains are used for regional trains on the branch line between Bullay and Traben-Trarbach. The train has a destination board. Use the keys "0" and. "Shift" + "0" to cycle between the destinations.

Signal system

The signals used on this route are German HV signals. Thank you to the German 'Signalteam' for providing us with this very realistic signals. We also included the PZB of virtualRailroads.

Scenarios

To drive the scenarios included in this route package please open the menu 'Drive' - 'Standard'. Select the loco 'Aerosoft-BR189' or the 'Aerosoft DB BR928' or 628 from the loco list. Now all scenarios available for the selected loco will be displayed in the scenario list. Select the scenario you want to drive and click on 'Start'.



Regional Express to Trier

Today the scheduled loco for the regional Express train from Cochem to Trier was replaced by the Diesel railcar. You start in Cochem on track 4. Your scheduled departing time is 11:32 .

Depart: Cochem track 4
 Destination: Trier Hbf track 11 (North)
 Loco: class 928
 Season: Summer
 Weather: clear
 Difficulty: easy



IC 132 to Trier

It's a cold Winter evening. Drive the IC132 from Koblenz to Trier.

Depart: Koblenz Hbf track 8
Destination: Trier Hbf track 11 (South)
Loco: class 189
Season: Winter
Weather: clear
Difficulty: medium

RB 94

A rainy day. Drive a regional train on the branch line from Bullay to Traben-Trarbach and back again to Bullay.

Depart: Bullay track 7
Destination: Bullay track 7
Loco: class 928
Season: Autumn
Weather: overcast, snow
Difficulty: medium

First Morning train

Your shift starts in Wittlich. Transfer the class 629 railcar to Bullay. Then drive the scheduled train from Bullay to Traben-Trarbach and back to Bullay.

Depart: Wittlich track 35
Destination: Bullay track 7
Loco: class 928
Season: Autumn
Weather: clear
Difficulty: medium

To the Christmas Market Wittlich - Trier

Today you drive a commuter train from Wittlich and Trier. Be prepared for slippery tracks.

Depart: Wittlich track 6A
Destination: Trier Hbf track 11 North
Loco: class 628
Season: Winter
Weather: snow
Difficulty: medium

Ore train to Ehrang part 1

You drive a completely loaded ore train from Moselweiss to Ehrang. In this first part you have to drive to Bullay. Pay attention to your speed.

Depart: Koblenz Gbf Track 408
Destination: Bullay Track 3
Loco: BR 189
Season: Autumn
Weather: clear
Difficulty: hard

Ore train to Ehrang part 2

After your lunch break you have to continue to drive the ore train. Depart from Bullay and drive to the final destination Ehrang.

Depart: Bullay Track 3
Destination: Ehrang Gbf Track 202
Loco: BR 189
Season: Autumn
Weather: clear
Difficulty: hard



Mixed freight train to the north part 1

You have to drive a train with mixed freight from Ehrang to Koblenz on this rainy evening in Autumn.

In the first part you drive to Wittlich.

Depart: Ehrang Gbf Track 236
Destination: Wittlich Track 6b
Loco: BR 189
Season: Autumn
Weather: stormy
Difficulty: easy

Mixed freight train to the north part 2

You have to drive a train with mixed freight from Ehrang to Koblenz on this rainy evening in Autumn.

The second part goes from Wittlich to Hatzenport.

Attention: Drive slowly when passing the station Cochem.

Depart: Wittlich Track 6b
Destination: Hatzenport Track 3
Loco: BR 189
Season: Autumn
Weather: stormy
Difficulty: hard

Mixed freight train to the north part 3

You have to drive a train with mixed freight from Ehrang to Koblenz on this rainy evening in Autumn.

In the third part you drive from Hatzenport to the final destination Koblenz Moselweiß.

Depart: Hatzenport Track 3
Destination: Koblenz Gbf Track 403
Loco: BR 189
Season: Autumn
Weather: cloudy
Difficulty: medium

Freight train to Cochem

Today you will drive the class 189 with empty Fals wagons from Koblenz to Cochem.

Depart: Koblenz Gbf Track 407
Destination: Cochem Track 4
Loco: BR 189
Season: Summer
Weather: clear
Difficulty: easy

Transfer to Wittlich

Bring some empty freight wagons needed in Wittlich from Cochem to Wittlich.

Depart: Cochem Track 5c
Destination: Wittlich Track 11
Loco: BR 189
Season: Summer
Weather: cloudy
Difficulty: medium

Annex

Known issues

Performance

Some of our 3D models have complex textures and need the appropriate memory. Please pay attention to the notes in the chapter 'Settings in Train Simulator' in this manual.

If a crash happens during your drive please reduce the setting of the slider for scenery quality. This will reduce the necessary memory with only a slightly decrease of the texture quality.

Signals/PZB

We did our very best to make the signalling system as close to the real world as possible. However there may be that a signal or a PZB magnet doesn't work as you expect in a certain situation and this is caused by the technical limitations of the Train Simulator.

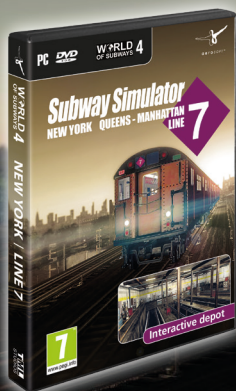
WORLD 4
OF SUBWAYS

Subway Simulator

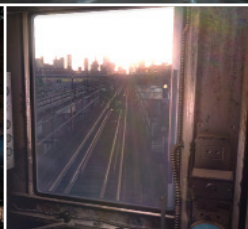
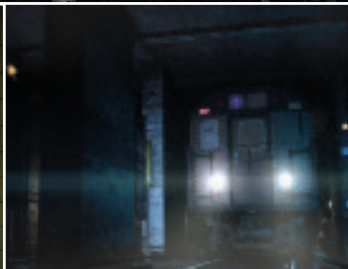
NEW YORK QUEENS - MANHATTAN

LINE

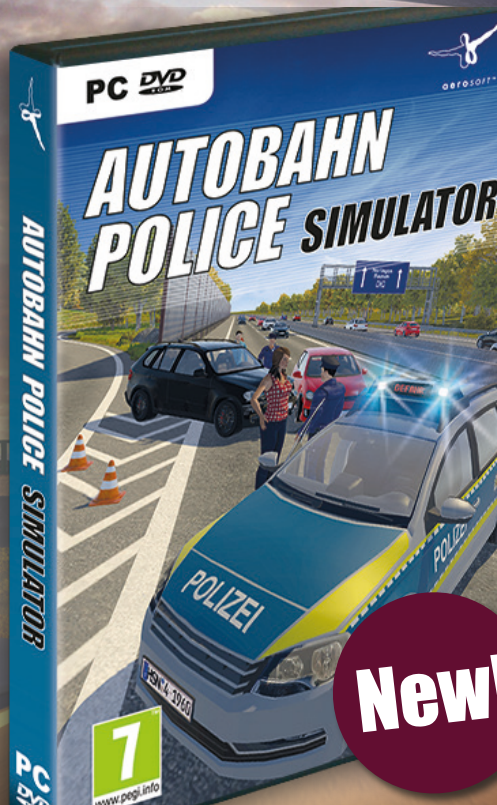
7



The story continues...



AUTOBAHN- POLICE **SIMULATOR**



New!



Experience challenging blue light police operations
on Germany's fastest roads!

www.aerosoft.com