

LUCIUS DEMAKE



MANUAL

INTRODUCTION

Lucius is the son of the devil who has to clear the mansion of its residents. To do this he must orchestrate "accidents" without anyone suspecting him of any foul play. The player starts as Lucius and must cleverly devise these incidents from simple household items. Every time he succeeds he will gain supernatural powers to help him take full control.

His growing supernatural powers may be used in various ways. He will eventually become able to control objects and people with mind power, move objects around without touching them. Lucius even has the incredible mind power to dictate weak people into causing destruction and pain.

He was born on the 6th of June in 1966 and when he had lived his sixth year on earth, he finally started to show signs of his true origin. The mansion is full of unrevealed mysteries that paint a story behind the family and how it became tangled with evil, but what is already clear is that Lucifer had taken the soul of the boy and replaced it with his own blood.

It's up to you to see that he cannot be stopped...

TABLE OF CONTENTS

INTRODUCTION.....	2
SYSTEM REQUIREMENTS.....	4
CONTROL COMMANDS.....	5
COMMANDS KEYBOARD.....	5
COMMANDS GAMEPAD.....	6
GAME SCREEN.....	7
MANA AND CROSSES.....	8
SKILLS.....	9
Telekinesis.....	9
Mind Control.....	9
Memory Erase.....	9
Combustion.....	10
MISCELLANEOUS.....	11
Notebook.....	11
Map.....	11
Inventory.....	11
CHORE REWARDS.....	12
Obtaining Chores.....	12
Ouija Board.....	12
Music Box.....	12
Tricycle.....	12
TROUBLESHOOTING.....	13
Technical Support.....	13
CREDITS.....	14
END-USER LICENCE AGREEMENT.....	15

SYSTEM REQUIREMENTS

MINIMUM:

OS: Windows XP

Processor: CORE 2 DUO

Memory: 2000 MB RAM

Graphics: Nvidia Geforce 275

Network: Broadband Internet connection

Storage: 500 MB available space

RECOMMENDED:

OS: Windows 7

Processor: Intel I5

Memory: 2000 MB RAM

Graphics: Nvidia Geforce 440

Network: Broadband Internet connection

Storage: 500 MB available space

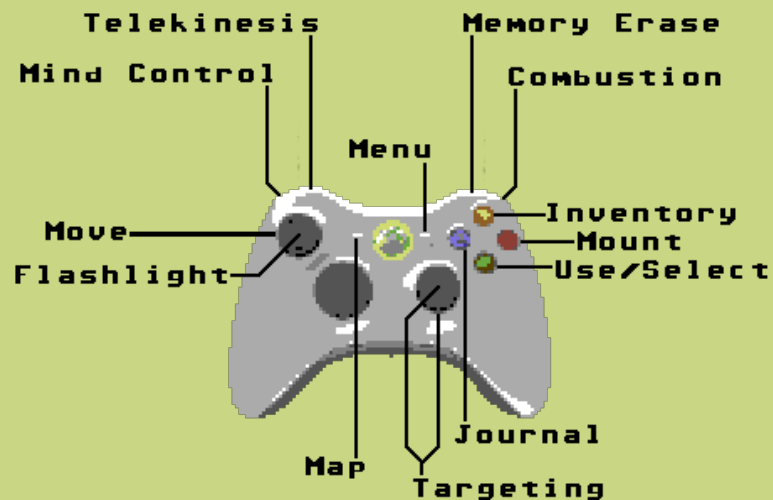
CONTROL COMMANDS

COMMANDS KEYBOARD

Move Left	Left Arrow
Move Right	Right Arrow
Move Up	Up Arrow
Move Down	Down Arrow
Toggle Inventory	E
Use	Space
Flashlight	F
Telekinesis	1
Mind Control	2
Memory Erase	3
Combustion	4
Journal	Q
Map	M
Targeting	Tab
Mount	W
Quick Save	F5
Quick Load	F6

Note: The default keys can be modified using the Options-Menu.

COMMANDS GAMEPAD



Note: The default controller layout can be modified using the Options-Menu.

GAME SCREEN



1. Mana bar. Cannot use skills if empty.
2. Equipped item. Press [Space] to use with target.
3. Skill Bar:
 1. Telekinesis
 2. Mind Control
 3. Memory Erase
 4. Combustion

Notes:

- Colored skills can be used immediately.
 - Grayed out skills cannot be used on target or does not meet the criteria to use the skill.
 - Empty icon indicates that the skill is not yet learned.
4. Exclamation mark (!) on speech bubble indicates that the character has something interesting to

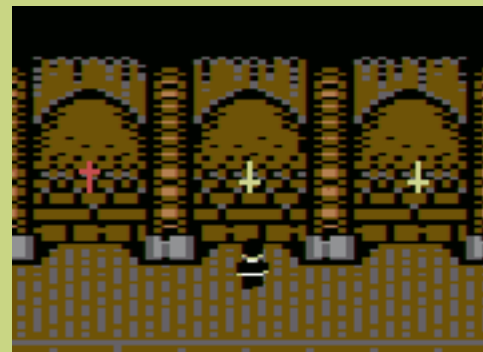
say. Characters with this symbol often reveal important clues to you.

5. Targeting reticle. You can target object by moving close to them or by pressing [Tab].
6. Teddybear. Occasionally appears bringing tips.
7. Cross. Consumes mana of Lucius when unturned.
8. Question mark (?) on speech bubble indicates that character has a chore for you to do.

MANA AND CROSSES

Mana empowers all the supernatural skills of Lucius. Using skills consume mana which replenishes over time.

During your adventure you will find yourself in situations where your mana bar is empty and does not replenish. This is because of the many crosses hanged on the walls of Dante Manor. A cross in a room makes Lucius weaker consuming his mana until the cross is turned upside down. Turning the cross in the room allows Lucius to use his skills properly in that room.



Two or more inverted crosses in the room are required for Combustion skill to work. Regardless of this, just one cross unturned is enough to prevent you from using the skill.

SKILLS

As you progress through the game you will learn different skills with the guidance of your true father.

Telekinesis

You can manipulate objects from distance with your will. After you have selected a target by moving close to it or by using [tab] press and hold [I] to manipulate the object with your mind. You can see your Mana drain at the bottom left of the screen as you use telekinesis.

To move the object to different directions as you manipulate the object use Arrow Keys while still holding [I] down. The object will start to move to the corresponding direction of Arrow Keys.

Telekinesis can be also used to start some mechanic objects or even break objects or machines by targeting the object and holding [I] key down.

Mind Control

You can take over people's minds and tell them what to do when their state of mind is weak. Simply use Mind Control by pressing [2] key while the person you want to influence is targeted. After this you will notice a purple effect above the target which indicates that the person in question is under your influence. Next, you will select another target for the influenced person to manipulate and press [2] key again. If the target is valid, the influenced person will use the object.

Memory Erase

After you have been spotted. You can clear the recent memories of the person by selecting the target person and pressing key [3]. This will avoid you of being caught.



White looping effect above character's head means that you have been spotted. If Memory Erase skill has been learned a purple bar appears indicating time that you have left to deal with the situation before game over. To avoid this you must target the person who spotted you and press [3] key to use Memory Erase on the person.



Successful Memory Erase stuns the target for a moment turning the white effect to purple. While the person is stunned you must quickly escape before he recovers from the effect.

Combustion

With the Combustion skill you are able to shoot a fireball. Remember though, before being able to use the this powerful skill, two or more inverted crosses are required in the room you are currently in. Use the skill by pressing key [4]. A fireball will be launched to inflict damage to your target.

MISCELLANEOUS

Notebook

You can toggle on and off your notebook by pressing the [Q] key. The notebook keeps track of Chapter progress, character conversations and chore progress.

You can go into detail of the Chapters by pressing [Space] on the names on the left side of the notebook. They will contain thoughts of the progress and might be very useful for solving the puzzles.

Map

You can toggle the map on and off by pressing the [M] key. A blue blinking area in the map will show where you are in the house. You can change the floor on the map by pressing [Up Arrow] and [Down Arrow].

The red blinking area in the map will show your next victims whereabouts if the person is awake or present in the mansion.

Inventory

You can toggle inventory on and off by pressing the [E] key. The selected object in the inventory is highlighted with reticle. You can shuffle through the objects with Arrow Keys.

Once you press [Space] in inventory, the selected object will be equipped and active.

If the object can be combined with another item the reticle will turn red instead of object being equipped. You can now try to combine items by selecting another item and pressing [Space] again while in inventory. The combination order does not matter.

CHORE REWARDS

Obtaining Chores

Chores are obtained from the characters around the house. A question mark on a speech bubble indicates that the person has a chore for you. Most of the chores you will find from your mother. The notebook will be updated when you gain new chores.

Ouija Board

When using the Ouija Board with [Space], the spirits will reveal a mysterious hint for the current Chapter.

Music Box

When holding the music box in hand you can use it by pressing the [Space] key. The music box will reveal a hint in form of a number indicating distance to somewhere.

Tricycle

This is the final reward and most fun reward. You can mount the tricycle by selecting it and pressing [W]. The cycle will greatly increase your movement speed. Once you have mounted the tricycle you can press [W] again to unmount the cycle.

TROUBLESHOOTING

Make sure you have up to date display drivers.
For NVIDIA drivers go to www.nvidia.com
For ATI/AMD drivers go to www.amd.com

Make sure you meet the minimum system requirements.
If the game is running slowly. Lowering the resolution often will improve the performance.
Closing unnecessary background tasks might improve performance.

Technical Support

Technical support e-mail address:
support@shivergames.com

Please include the detailed problem in the email.
For support on Steam Community Hub please go
<http://steamcommunity.com/app/364230/discussions/>

To help solve technical issues please provide us information about your PC. The easiest way to do this is to use DirectX Diagnostics Tool:
Open Start > Run > dxdiag and press enter.
Let the dxdiag run its course and when done. Save the system configuration information as a txt file and include it in the email.

CREDITS

Project lead and design
Johannes Aikio
Heikki Pulkkinen

Programming
Janne Laine
Johannes Aikio

Original Art
Gergely Sinkó

QA
Alessandro Laina
Uesa Runtti
Janne Sormunen
Heikki Pulkkinen

Audio
Music and Composition by Johannes Aikio
Additional material Janne Sormunen

Thanks
Jari Kantomaa
Outokumpu Pelikoulutus
Olli-Matti Rautiainen
Petteri Nousiainen
Petri Hannula
Lapin AMK
Outokumpu PKKY

END-USER LICENCE AGREEMENT

Please read the following terms and conditions carefully before using this SOFTWARE PRODUCT. Your use, distribution or installation of this copy of "LUCIUS DEMAKE" indicates your acceptance of this License.

SOFTWARE PRODUCT here means Software, image files, all accompanying files, data and materials received with your order of "LUCIUS II : THE PROPHECY".

If you do not agree to any of the terms of this License, then do not install, distribute or use the SOFTWARE PRODUCT.

This SOFTWARE PRODUCT is for personal use only and may be installed and used by on only one computer. Its component parts may not be separated for use on more than one computer. SOFTWARE PRODUCT may be accessed through a network only after obtaining a site license. All components accompanying the software are copyrighted by Shiver Games and may not be taken apart, modified, used or published with other software or means except with the SOFTWARE PRODUCT software and may not be distributed or copied in any manner.

This SOFTWARE PRODUCT, all accompanying files, data and materials, are distributed "AS IS" and with no warranties of any kind, whether express or implied. The user must assume all risk of using the program. This disclaimer of warranty constitutes an essential part of the agreement.

Any liability of Shiver Games will be limited exclusively to refund of purchase price. In addition, in no event shall Shiver Games, or its principals, shareholders, officers, employees, affiliates, contractors, subsidiaries, or parent organizations, be liable for any incidental, consequential, punitive or any other damages whatsoever relating to the use of SOFTWARE PRODUCT.

In addition, in no event does Shiver Games authorize you to use this SOFTWARE PRODUCT in applications or systems where SOFTWARE PRODUCT 's failure to perform can reasonably be expected to result in a physical injury, or in loss of life. Any such use by you is entirely at your own risk, and you agree to hold Shiver Games harmless from any claims or losses relating to such unauthorized use.

This Agreement constitutes the entire statement of the Agreement between the parties on the subject matter, and merges and supersedes all other or prior understandings, purchase orders, agreements and arrangements. This Agreement shall be governed by the laws of Finland.

Shiver Games the owner of the copyright of this SOFTWARE PRODUCT, all of its derivatives, title and accompanying materials are the exclusive property of Shiver Games. All rights of any kind, which are not expressly granted in this License, are entirely and exclusively reserved to and by Shiver Games. You may not rent, lease, transfer, modify, translate, reverse engineer, de-compile, disassemble or create derivative works based on this SOFTWARE PRODUCT. You may not make access to SOFTWARE PRODUCT available to others in connection with a service bureau, application service provider, or similar business, or use this SOFTWARE PRODUCT in a business to provide file compression, decompression, or conversion services to others. There are no third party beneficiaries of any promises, obligations or representations made by Shiver Games herein.

You may not disclose to other persons the data or techniques relating to this SOFTWARE PRODUCT that you know or should know that it is a trade secret of the Shiver Games in any manner that will cause damage to Shiver Games.

This SOFTWARE PRODUCT and all services provided may be used for lawful purposes only. Transmission, storage, or presentation of any information, data or material in violation of any Finland, State or City law is strictly prohibited. This includes, but is not limited to: copyrighted material, material we judge to be threatening or obscene, or material protected by trade secret and other statute. You agree to indemnify and hold Shiver Games harmless from any claims resulting from the use of this SOFTWARE PRODUCT, which may damage any other party.

