

# FISHING BARENTS'S SEA



Welcome!

Thank you for purchasing **Fishing: Barents Sea**. In this manual, you will find useful tips that will allow you to enjoy the best gaming experience without problems. The Misc Games and astragon teams hope you have fun playing!



## Epilepsy Warning

Some people may experience photosensitive epileptic seizures or a loss of consciousness when viewing certain visual stimuli, such as flashing lights or patterns, in everyday life. Such individuals are at risk of experiencing seizures while watching television or playing video games. This can happen even to individuals with no history of related health conditions or signs of epilepsy.

**The following symptoms are characteristic of photosensitive seizures:**

blurred vision, eye or facial twitching, trembling arms or legs, disorientation, confusion or momentary loss of balance. During a photosensitive seizure, loss of consciousness and convulsions may cause serious accidents, as these symptoms are often accompanied by a fall. If you notice any of the above symptoms, stop playing immediately. It is strongly recommended that parents supervise their children while playing video games, as children and adolescents are often more prone to photosensitive seizures than adults.

If any such symptoms occur, **STOP PLAYING IMMEDIATELY AND SEEK MEDICAL ADVICE**. Parents and guardians should keep children in sight and ask them if they have ever experienced one or more of the above symptoms.

## Table of Contents

System Requirements	3	Im Game	5
Installation and Start	3	The Port	6
Uninstallation	4	Fishing Methods	7
Introduction	4	Tips and Tricks	9
The main menu	5	Support	9
Tutorial	5	Credits	10

## System Requirements

To be able to play **Fishing: Barents Sea** you need a PC that fulfils the following system requirements:

- Windows 7, 8.1, 10 (64 Bit)
- Processor: Intel Core i5-3570K 3.0 GHz or similar (recommended: i5-7600 3.5 GHz)
- 4 GB RAM (recommended: 8 GB)
- Graphic card: GeForce GTX 750 or similar (recommended: Geforce GTX 1060 or similar)
- DirectX 10
- Free hard drive space: 10 GB

## Installation and Start

**NOTE:** The product is subject to your acceptance of the terms and conditions of Steam subscriptions („Steam Subscriber Agreement, SSA“). The product must be activated over the internet by registering a Steam account and accepting the SSA.

### Further Requirements and Help

The installation requires a one-time internet connection for the authentication as well as the Steam client (included with the game).

### Installation on your PC

Please ensure that your computer is connected to the internet before starting the Fishing: Barents Sea installation process. Insert the **Fishing: Barents Sea** disc into your computer's disc drive. During the installation process, a one-time online check will be carried out to verify the disc. An activation file will then download, which will require a product code. You will find the code on the back of this manual.

**Please be advised that this code is not a STEAM® code.**

To receive your STEAM® code, insert the game disc into your disc drive. After a few seconds a window will pop up on your screen. Should autostart be deactivated, double click **My Computer** on your Windows desktop, then double click on the symbol of your **disc drive** and in its windows on



the symbol of the **“redeem.exe”** file. Follow the instructions there to receive your STEAM® code.

After you have received your STEAM® code, you can copy it into your clipboard. Click on **“install game”** and follow the instructions on screen to install **Fishing: Barents Sea**.

The installation and activation of the game, as well as downloading of updates might require the disc to be in your disc drive.

Should you encounter a problem with unlocking your code, please visit the following website: <http://copyprotection.astragon.com>

### **Starting the game**

Following successful installation, launch the program by selecting **Start/All Programs/Steam/Fishing: Barents Sea** in the Windows Start menu or via the corresponding icon on the desktop.

If you encounter security messages when launching the autostart menu on Windows 7, Windows 8 or Windows 10, please note that it is safe to run the **„setup.exe”** or **“redeem.exe”** program.

### **Uninstallation**

Select **Start/Settings/Control Panel/Software** and choose the **„Fishing: Barents Sea”** entry. Then click on the **Add/Remove button**. The program itself, as well as files and game data, will then be uninstalled.

### **Introduction**

In **Fishing: Barents Sea** you inherit an old fishing boat from your grandfather and take on the rough Barents Sea to fulfil your dream of becoming a commercial fisher. Earn money with your first boat to afford new and better equipment as well as larger ships.

Learn new fishing methods and upgrade your ships to find the best fishing grounds. With a large trawler you can then drive out to the high seas to get the biggest catch!



## Main Menu

**Continue Career** – Load your last saved game

**Start new career** – Here you can start a new game and play the tutorial that explains the basics of the game

**Load career** – Load your saved game

**Options** – Here you can change different graphics-, audio- and game settings

**Credits** – Take a look at those responsible for making Fishing: Barents Sea

**Exit game** – Click on „exit game“, to return to the desktop

## Tutorial

When you start the game for the first time the game offers a tutorial to play. Here you will learn the basics of Fishing: Barents Sea and we recommend playing through it before the start of your career. With the small boat of your grandfather and the first fishing method you have everything you need to become a successful fisherman.

## In Game



**Main menu** – Here you can go back to the main menu and its sub menus at any time



**Wiki** – The **Fishing: Barents Sea** Wiki gives you information about the different kinds of fish, bait, fishing methods, and general game mechanics



**Logbook** – The logbook gives you information about current developments in the season, events, jobs that you've taken, your equipment, the fish you've sold and which certificates you own



**Equipment** – Here you can set your equipment, pick it back up, and start the gutting of the fish



**Lights** – Here you can turn the different lights of your ship on and off

## Inventory



Change here between GPS, sonar, your storage, information about set equipment, the weather, or crew members

On the right side of your screen you can see the current condition of your ship, the level of your gas tank, as well as the orientation and speed of your ship, and the minimap.

## The Port



### Map

Take a look at the map of Northern Norway and set waypoints or use fast travel.



### Fish Market

The first tab shows you an overview of the standard fish prices, in the second one you can buy new lines or nets for your ships. If you are using longlines you can buy bait for them here as well.



### Town

By visiting the town you can take out a loan in the first tab, visit the bar to accept missions in the second, hire crew members in the third and lastly buy rescue service memberships.



### Dock

At the docks you can find three tabs where you can maintain your ship, upgrade it, or even buy a completely new one!



### Go Fishing!

Drive out to the beautiful Barents Sea and find the biggest catch!

## Fishing Methods

### Line Fishing

Longline fishing is a commercial fishing technique. It uses a long line, called the main line, with baited hooks attached at intervals by means of branch lines called snoods. Hundreds or even thousands of baited hooks can hang from a single line.

To use longlines, you need to bait them at port. You also need to bait them again after use. To set a long line, click the “set gear” button on the HUD, select a baited line to set, and a buoy will be placed out. Make sure to keep a steady pace while you set the line!

A longline should be picked up after being in the sea for 20 to 22 hours. Longlines have to be picked up within 48 hours after being set. Fish will also start rotting after 22 hours and eventually your line will be lost.

While picking up the line you need to click the left mouse button at the right moment. Try to time it so that the circle is smallest to get a bonus to your haul. But be careful not to miss!

### Net fishing

A fishing net is used for net fishing. They are devices made from fibres woven in a grid-like structure. Modern nets are usually made of artificial polyamides like nylon, although nets of organic polyamides such as wool or silk thread were common until recently and are still used.

Set the net by clicking the “set gear” button on the HUD and keep a steady pace while it’s being set out. Fish nets have different lengths, longer nets have a bigger catch area. A fish net should stay in the sea for at least a minimum of 8 hours before you can pick it up. The net must be picked up within 30 hours after it’s set or the net will get lost.

When hauling the fish net, you will need to free the fish from the net by using your hands. Click the right key combinations as displayed on screen while the net hauler is hauling the net.

Fish nets can be reused again if it’s not too damaged.

### Trawling

Trawling becomes available when you unlock the ship **Lunar Bow**.

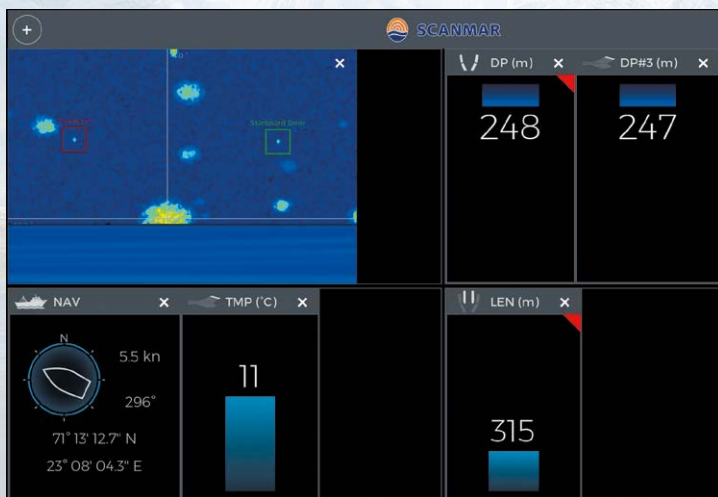
Trawling is a significantly different method of fishing to longline and net fishing, which involves dragging or pulling a trawl or trawlbag through the water behind the trawler. As trawling can have a negative impact on the marine envi-

ronment, it is only legal more than 12 nautical miles from land. For this reason you will need to head to the open water in the north-west if you wish to trawl.

When you travel far enough to the north-west, an icon will appear at the right of the main HUD which you can click to continue travelling to the open water.

Now that you are at the open water you are able to start trawling. Open the **crew management** interface below, and assign 4 crewmembers to the „Set Trawl“ task.

Now set your speed to about 5 knots and click the „Set Gear“ button to start trawling.



Here you can customize the sensors display which is shown on the primary screen when sitting at the trawler control deck. If you press the + button at the top left you can drag different measurement panels from the menu which will appear. Most measurements will only have valid data when you are actively trawling.



## Tips and Tricks

- Make sure you have an eye on your fish quota, if you filled them you won't be able to catch any more of that type of fish.
- If you don't know what to do, try taking a look at the Wiki that you can find in the upper left corner of the screen. It's depicted by a question mark.
- Can't throw out your lines on the sea? Make sure that you have baited them at the harbour.
- Crew members can help you out on your ship, but you need to buy the second ship to hire them.
- Be aware of the amount of fuel you currently have available, and remember to refuel at port. You don't want to get stuck at sea!
- Build up reputation at ports by delivering fish. Increased port reputation gives you better paid missions and increased paid for delivering catch.
- Keep fish habitats healthy, to keep them sustainable. Overfishing will eventually kill the habitats.
- Depending on the time of year, you might be able to get better (or worse) prices for your fish. Pay attention to the events chapter in the Logbook.

**For further information** please take a look at the FAQs on our website:

<http://faq.astragon.com/faq-fishing-barents-sea>

or visit the game's homepage <http://fbsgame.net/>

or take a look a tour facebook page:

<https://www.facebook.com/fishingbarents/>

## Support

Do you need help with Fishing: Barents Sea or are you looking for news? Visit our STEAM® forum: <http://steamcommunity.com/app/501080/discussions/>

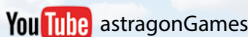
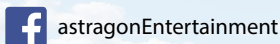
Before contacting our support team, first check and, if available, update the drivers on your PC. Many graphics and sound problems can be resolved by simply updating the drivers.

If you have any questions about this product which have not been covered in the manual, you can contact the astragon Entertainment support team as follows:

**E-Mail support:** [helpdesk@astragon.de](mailto:helpdesk@astragon.de)

## Liability

This software has been carefully created, tested and reproduced. Please ensure that your computer meets the system requirements. Liability for consequences resulting from inaccurate information cannot be accepted by the publisher. The publisher makes no claim to completeness.



© 2018 astragon Entertainment GmbH. All rights reserved. © 2018 Misc Games AS. All rights reserved.  
© 2018 Valve Corporation. Steam and the Steam logo are trademarks and/or registered trademarks of the Valve Corporation in the USA and/or other countries. Unreal, Unreal Engine, the circle-U logo and the Powered by Unreal Engine logo are trademarks or registered trademarks of Epic Games, Inc. in the United States and elsewhere. Developed with the kind support of Scanmar and Hermes.



## Credits

### Misc Games AS

#### Game director

Gøran Myrland

#### Public relations

Yasemin Hamurcu

#### Lead programmer

Justin Beales

#### Programmer

Sam Jeeves

#### 3D Artist

Mikael Fossum

#### Music

Jørgen Manke

#### Sound

Jørn Lavoll & Jørgen Manke

#### 2D Artist

Zdenek Sasek

### astragon Entertainment GmbH

#### Management

Julia Pfiffer

Tim Schmitz

#### Head of International and Digital Sales

Sebastian Zechel

#### Sales

Sabrina Trösken

Alexander Peck

Christian Langer

#### Accounting

Monika von Hall Koppel

#### Marketing

Gennaro Grippo

Pierre Friedrichsmeier

Yvonne Lukanowski

**Head of PR &  
Community Management**

Felix Buschbaum

**PR & Community Management**

Daniella Wallau

Carsten Höh

**Head of Producing**

Christian Grunwald

**Producing**

Tim Plöger

Tobias Göcke

Benjamin Wolf

Dennis Strillinger

**Head of Mastering &  
Submission Management**

Julian Broich

**Submission Management**

Jens Brauckhoff

**Project Management Online**

Thorsten Krietsch

**Product Management**

Judith Lücke

**Assistant Product Management**

Leen Samtmann

Miriam Kaisers

Daniel Hartmann

**Quality Assurance**

Max Baus

**Distribution and additional  
Publishing Support:  
astragon Sales & Services GmbH**

**Management**

Kristina Klooss

**Sales**

Jenny Weißert

**Accounting**

Heike Carmona

**Head of Product Management**

Reinhard Vree

**Product Management**

Christian Winkler

**Art Director**

Christian Irmen

**Quality Assurance**

Miles Broich

Maxine Broich

**Quality Assurance by  
Games Quality**

**Inhaber**

Stefan Wegener

**Test Lead**

Christoph Möbius

Mario Fritsch

Jonathan Willnauer

**QA Tester**

Anne Krehl

Alexander Frank

Björn Muczinski

Jonathan Lehmann

Mario Reyer

Rico Kucel

Ronny Richter

Piotr Kakeh


Dennis Orschulok

**Projektmanager**

Oliver Mistarz

**Localisation and localisation QA**

Roboto

A scenic landscape featuring a red and white ferry boat moving across a dark blue body of water. In the background, there are snow-capped mountains and a lighthouse on the left. The sky is blue with scattered white clouds. A white rectangular box is overlaid on the image, containing text.

Product key – This is not a STEAM® code