



[DISPLAY FRENCH DOCUMENTATION](#)

*Scenery addon for IPACS® Aerofly FS2®*

The new **VFR Regional** series was designed and developed to provide VFR flight an environment as realistic as possible. It is the result of years of experience and practice in flight simulation and 3D modeling.

"VFR Regional" products embed all enhancements from the new 3DAutomation® technology developed by France VFR. This technology already allows to generate the most realistic and dense environments ever seen. It does not intend to model real world accurately but to create a copy "as real as it gets" on a massive scale. It will evolve to adapt to the needs and new data available.

**QUALITY FIRST! BY NOT MAKING ILLEGAL COPIES OF THIS PRODUCT AND ONLY USING ORIGINAL FRANCE VFR PRODUCTS, YOU ALLOW US TO CONTINUE DEVELOPING TOP QUALITY PRODUCTS!**

## *PRODUCT REQUIREMENTS*

This scenery addon is designed to work only with the IPACS Aerofly FS2 simulator.

**NOTE :** This scenery addon is NOT compatible with Microsoft Flight Simulator X or Lockheed Martin Prepar3D simulators.

## *INSTALLATION*

- For Steam version users, refer to the installation/uninstallation instructions provided on the Steam website.
- For standalone version users (non Steam), refer to the installation/uninstallation instructions provided in the installation package.

### **UNINSTALLATION (non Steam version)**

To uninstall your **France VFR** product, follow these steps:

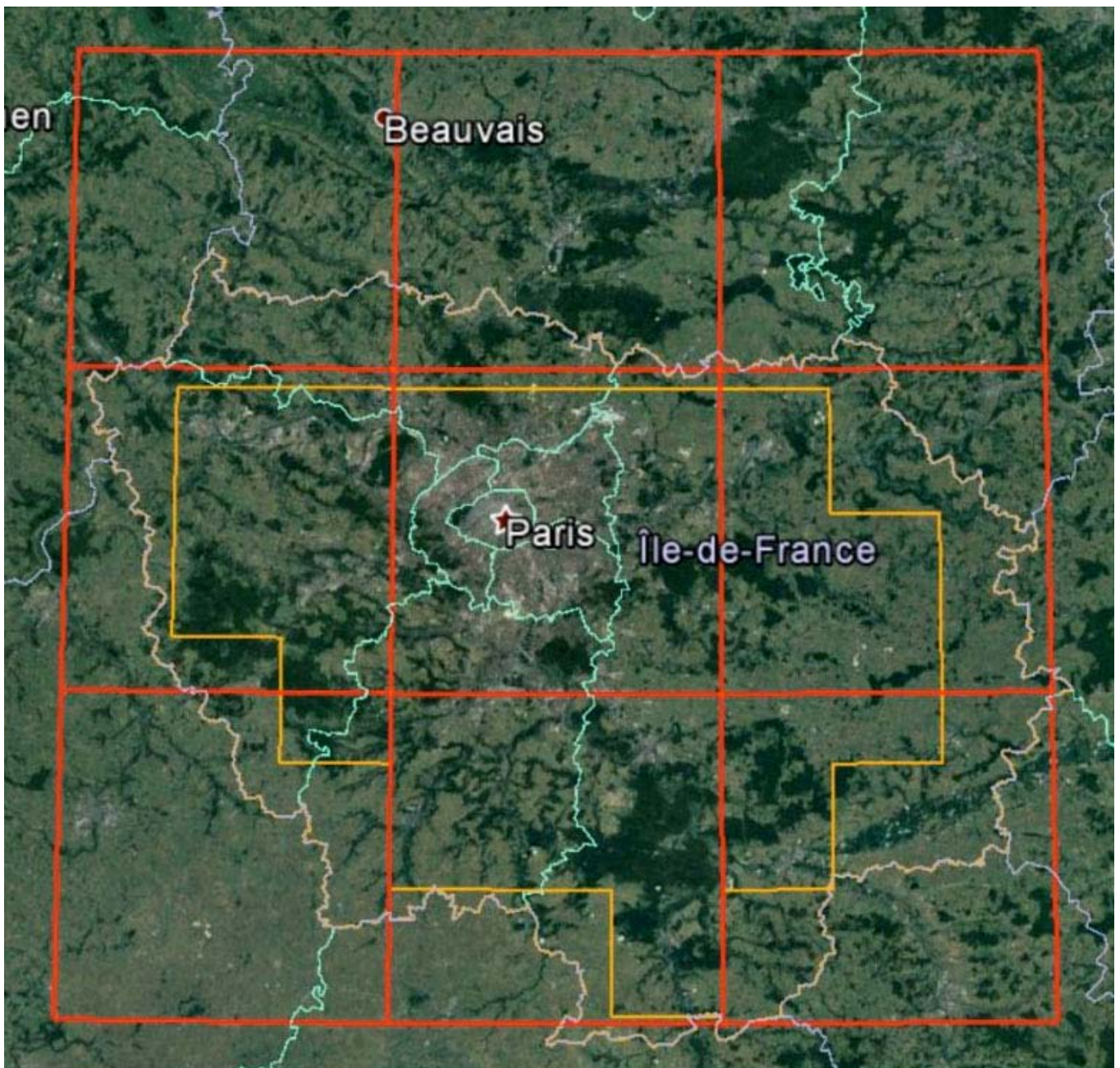
- Click the « START » button in the Windows taskbar.
- Click on "Programs" then "France VFR" and then locate the menu option for your product.
- Click the uninstall option.

## *PRODUCT FEATURES*

- Paris-Ile de France region depicted in complete detail.
- Ground textures from 0.25 to 1.00 meter/pixel resolution from IGN aerial photography reworked for an optimal visual rendering.
- Ultra HD mesh 4.75 meters resolution over the entire scenery.
- Obstacles and VFR landmarks modeled on the entire scenery including the official SIA database (antennas, towers, water towers, wind turbines, various constructions ...).
- Thousands of objects and POI buildings integrated into the environment (churches, power plants, silos, castles, industrial tanks, bridges, tolls...).
- Lognes, Saint-Cyr and Toussus airports modeled in great details.
- Charles De Gaulle, Orly and Le Bourget modeled in standard details.
- Integration of **3D Automation**<sup>®</sup> technology allowing multi-million buildings and realistic vegetation areas fitting geographic specifications.
- Extremely dense vegetation cultivation from high resolution IGN data.
- Full 3D night lighting on the entire scenery.
- Geo-referenced data for maximum compatibility with future add-ons installed on the same area.



## SCENERY COVERAGE



**Medium resolution photo-realistic coverage only**

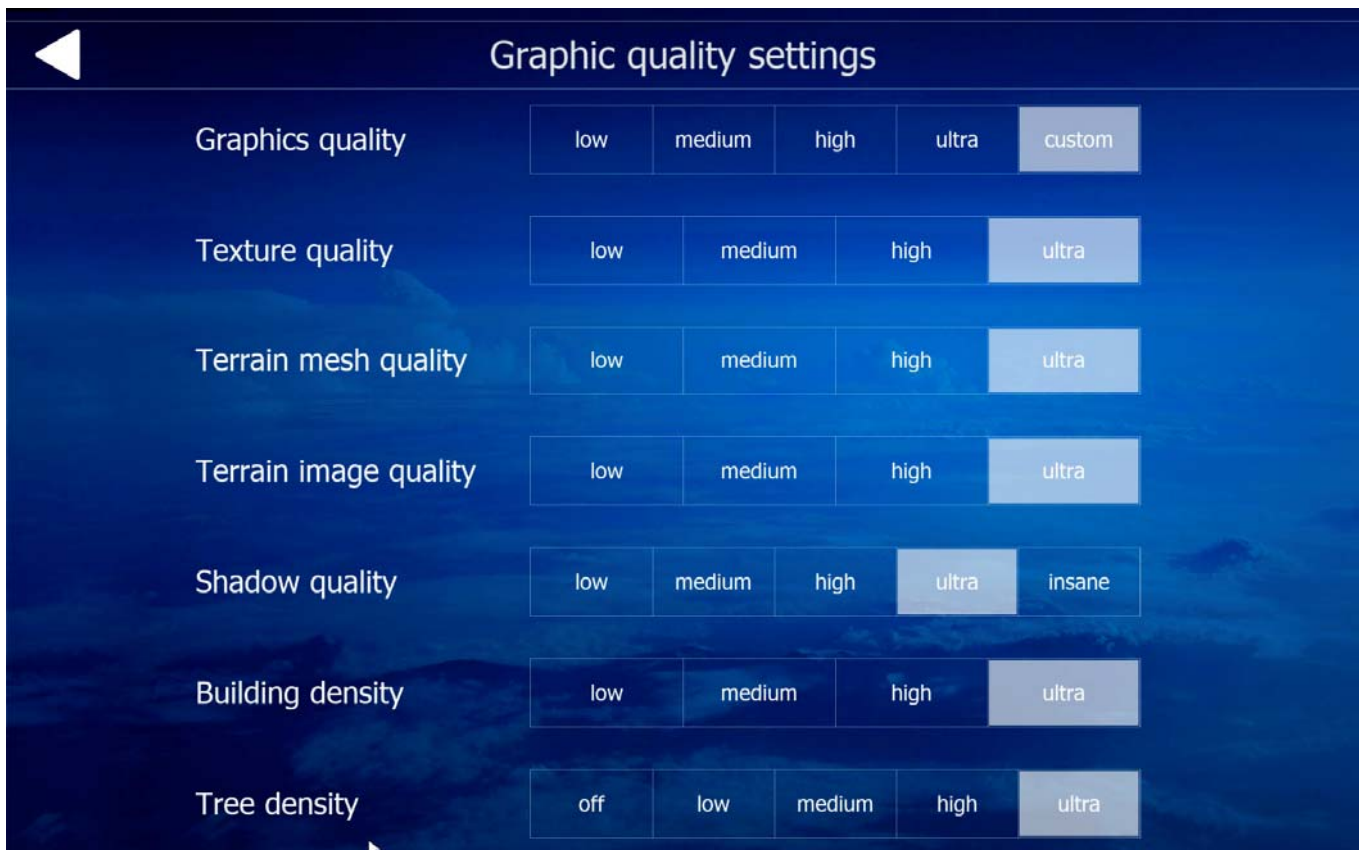


**High resolution photo-realistic + buildings/vegetation coverage**

## SETTINGS

The graphics engine of Aerofly FS2 being extremely powerful you can adopt very high graphics settings (subject to sufficient hardware configuration).

**NOTE :** The center of Paris being extremely dense it is advisable to carry out a minimum of adjustment tests in order to find the best compromise between quality and performance.



## *CHARTS AND FLIGHT DOCUMENTATION*

All the maps and SIA-DIRCAM / DIA documentation of the scenery airports are located in the "documentation" sub-directory of the directory selected during the product installation process.

## *TECHNICAL SUPPORT*

For any question about this product please login to our technical support forum:

<http://www.vfrnetwork.com/forums/>

(free registration)

## *CREDITS*

### **Aerial photographs**

IGN - Institut Géographique National

### **VAC/SIA/DIRCAM Charts**

SIA - Service de l'information aéronautique

DIA/DIRCAM – Direction information aéronautique

IPACS Aerofly FS2 is a registered trademark of IPACS GmbH  
**Copyright © 2020 France VFR® – All rights reserved.**