



QUICK MANUAL



January 2010
Confidential

© 2007-2009 Streum on Studio, all rights reserved. Streum On Studio, the Streum On Studio logo, E.Y.E, the E.Y.E logo are trademarks and/or registered trademarks of Streum On Studio.



Contents

Chapter 1 : Game menus	3
1.1 Main menu	3
1.2 Options menu	4
Gameplay menu	5
Chapter 2 : Quick Actions menu	6



Chapter 1 : Game menus

1.1 Main menu



To play the E.Y.E campaign, click (1). When you launch the game, it will propose you to create a character, when it's done, your character will be logged in. When you'll launch the campaign again, the game will resume where you stopped, and your character will be loaded.

To log out, and thus create another character or play another, click (2).

To launch Temple HQ, click (3). The Temple HQ allows you to go to the temple, thus allowing you to do secondary missions and buy items to various sellers without launching the campaign.

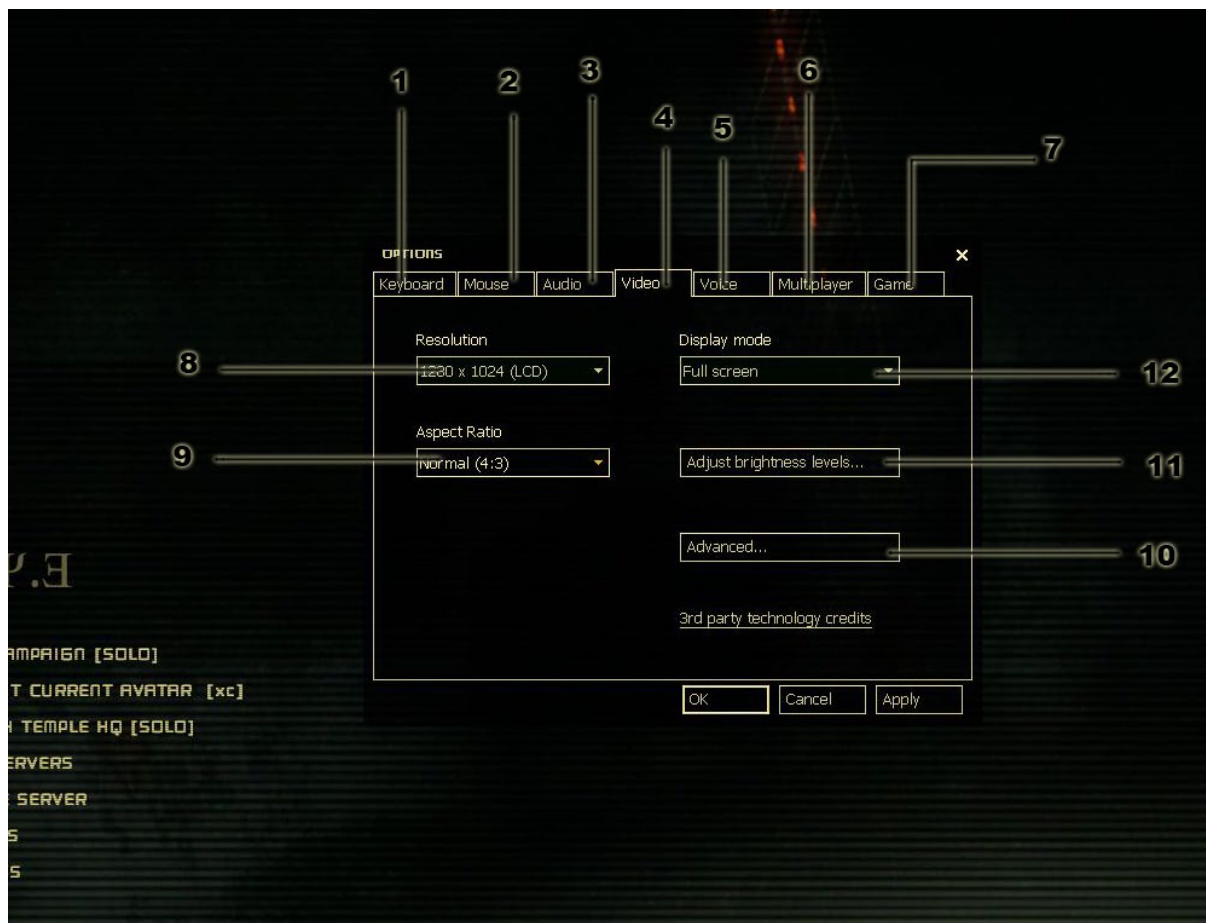
To look for a multiplayer server, click (4). To create and host your own multiplayer game, click (5).

To see if your friends are playing, click (6).

To set your options (keyboard configuration, video options, etc...) click (7). Finally, to quit the game, click (8).



1.2 Options menu

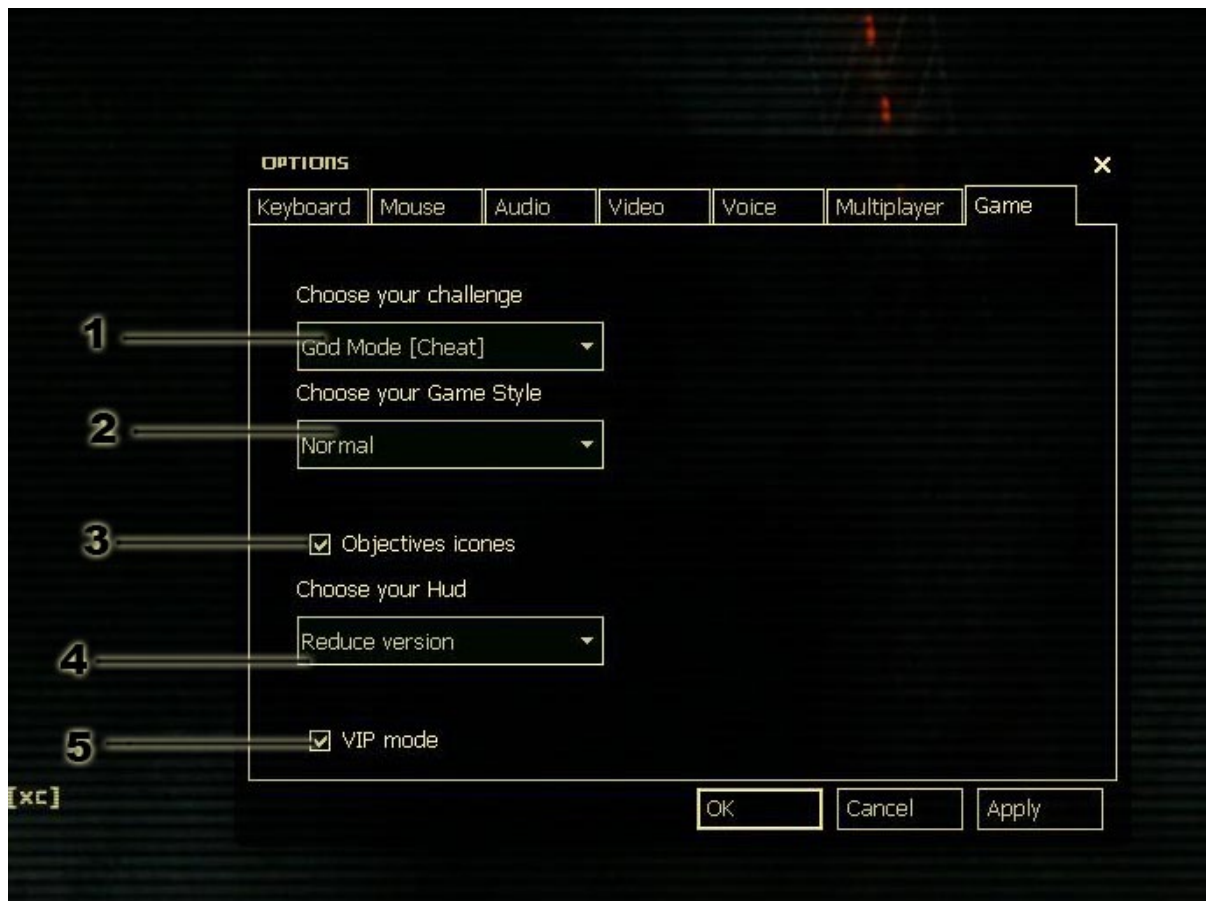


This menu allows you to configure the game as you like. When clicking (1), you'll be able to configure the keyboard, and when clicking (2) you'll be able to configure your mouse.

You can also configure the audio on (3), video options on (4), vocal chat system on (5), multiplayer options on (6) and finally gameplay options on (7), more informations below.

In the video options, you can configure the resolution (8), the aspect ratio (9), if the game should be in full screen or not (12), the brightness and black levels onscreen (11), and the advanced menu (10). The game automatically detects the best configuration for your computer.

Gameplay menu



This menu allows you to configure the game for a greater pleasure and a better experience.

You can choose your difficulty level:

God mode (1) makes you immortal, and you gain a lot more money and experience. After this, the difficulty modes are from Easy to Master.

Game Style (2) defines the type of play you wish and implies on the presence of your opponents.

Objectives icons (3) allow you to display or not the objective icons during the game.

You can configure the HUD as you wish (4). The VIP Mode (5), if checked, gives you all the weapons and equipments of the game, without needing to buy them during the game.

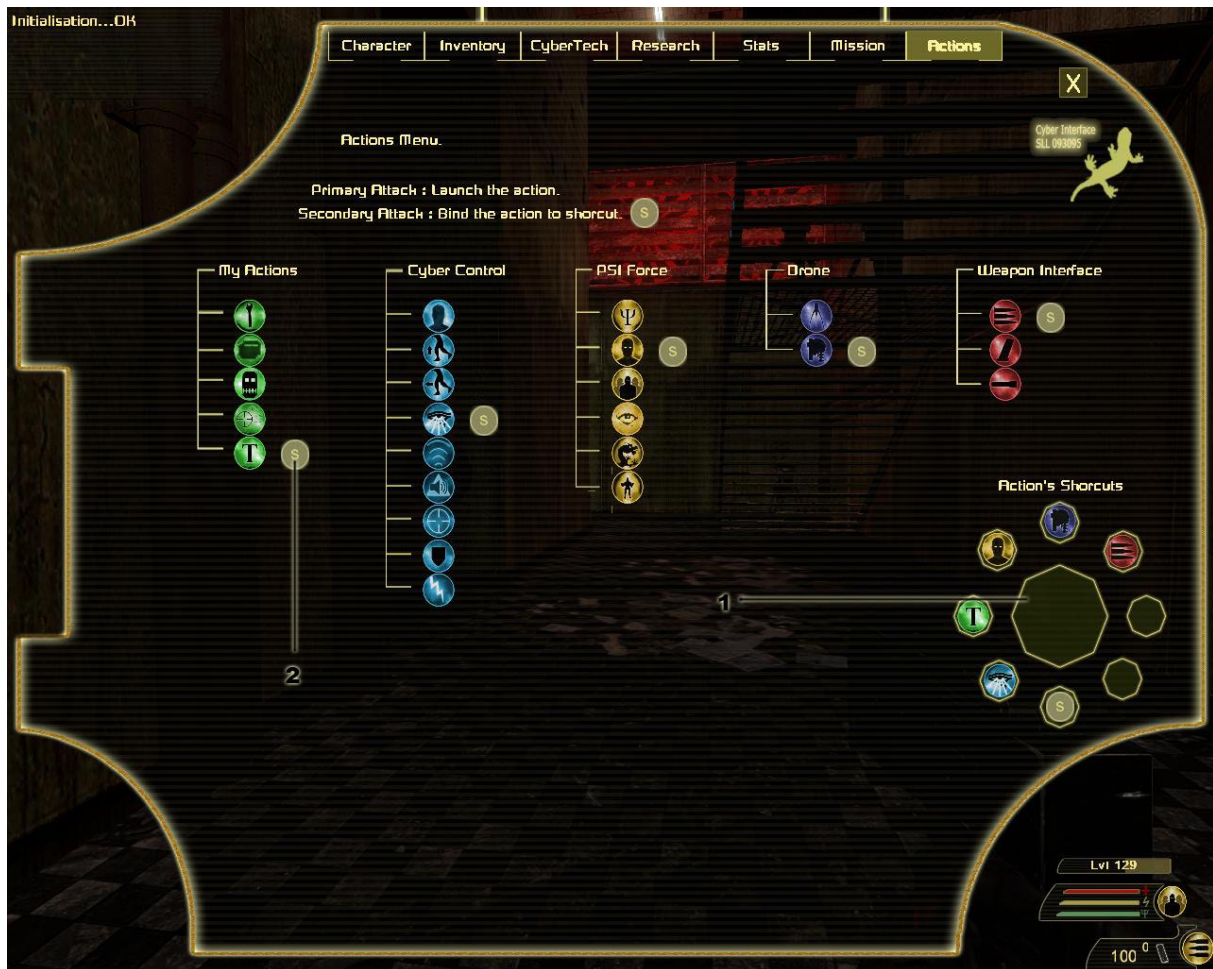
Chapter 2 : Quick Actions menu



The Quick Actions Menu allows you a fast and easy access to every function in E.Y.E. You can play without it and configure your shortcuts normally, or use both systems.

To show the Quick Actions Menu during the game, keep the [Quick Actions] key pressed. You must set that key in the options menu though. A radial menu (1) appears. Move your mouse to choose the box you want. Basically the menu only has one choice, the « S » which grants access to the Actions Menu. Move your mouse on it, and release the [Quick Actions] key to validate.

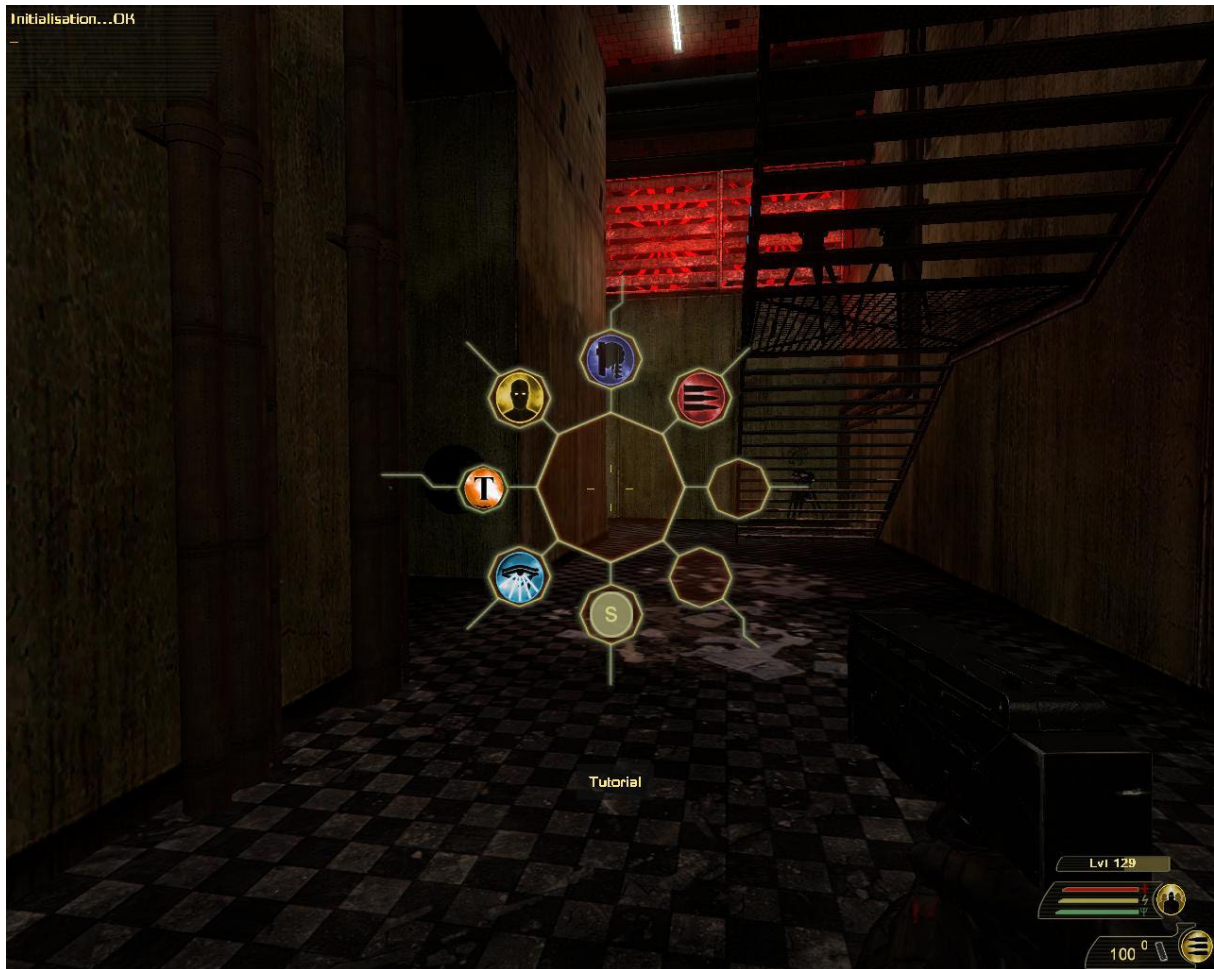
Then the Actions Menu shows up, containing all the functions of the game:



Every icon represents an action. When clicking with the left mouse button, you directly launch the action. When clicking with the right mouse button, a shortcut of it is created in the Quick Actions Menu (1), and a «S» appears besides the action to remind you a shortcut is set for it.

To remove a shortcut, use the right mouse button on it again.

When it's done, close the window by clicking the « X ».



Display the Quick Actions Menu during the game, hold the [Quick Actions] key pressed. You must set that key in the options menu though. The radial menu (1) appears. Move your mouse to choose the box you want. Move your mouse on it, and release the [Quick Actions] key to validate.